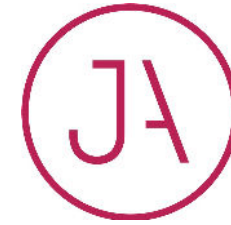




**JAMES
ANDERSON**

Lower Richmond Road
London SW14
£675,000



Lower Richmond Road London SW14

A stunning period ground floor maisonette close to 850 sq ft which has been superbly updated to create a wonderfully light and spacious home. The property offers period features along with high ceilings and wooden flooring. The kitchen and bathroom provide a modern twist with superb open plan living accommodation that flows out to an enclosed south facing garden. The property is further enhanced by ownership of the freehold and offers further potential to extend into the side return subject to planning. Excellent public transport links are available with Mortlake station a short walk away and local bus services providing access into Richmond and Hammersmith with their underground networks.

Tenure: Sold With Freehold For The Building

Service charge: £0

Ground rent: £0











ZALUSKI









Lower Richmond Road


Approximate Gross Internal Area = 836 sq ft / 77.7 sq m
(Excluding Reduced Headroom)

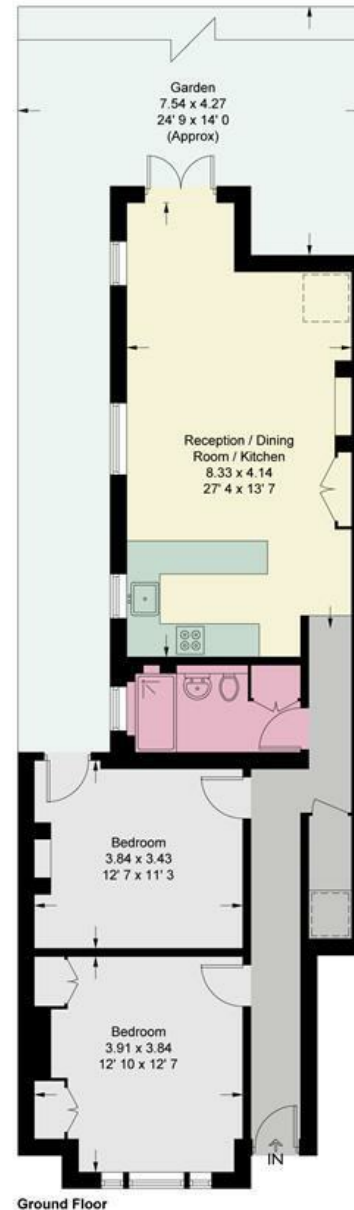
Reduced Headroom = 14 sq ft / 1.3 sq m

Total = 850 sq ft / 79 sq m



JAMES
ANDERSON

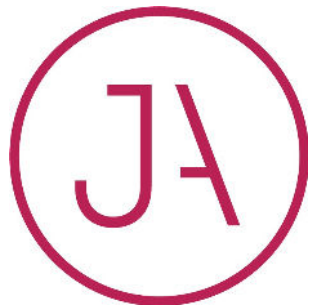
 = Reduced headroom below 1.5m / 5'0



JAMES
ANDERSON

This plan is not to scale and must be used as layout guidance only. All measurements and areas are approximate and should not be relied upon to provide accurate information. This plan must not be relied upon when making property valuations, design considerations or any other such relevant decisions. We accept no responsibility or liability (whether in contract, tort or otherwise) in relation to any loss whatsoever arising from or in connection with any use of this plan or the adequacy, accuracy or completeness of it or any information within it.





363 Upper Richmond Road West
East Sheen
SW14 7NX

020 8876 6611
sales@jasheen.co.uk
www.jamesanderson.co.uk

