



**JAMES  
ANDERSON**

Church Avenue  
London SW14  
£1,395,000



## Church Avenue London SW14

A stunning four/five bedroom Edwardian period family home situated in a central location in East Sheen. The house is presented in excellent condition with an equal balance of period character and modern design including original fireplaces, high ceilings, picture rails and corning. The property also features a fully integrated kitchen with induction hob, modern bathrooms with underfloor heating and towel rails, hive heating system, the addition of air conditioning throughout the property and recently installed new bedroom and main bathroom windows. The ground floor comprises: a wide and family friendly entrance hallway, large reception room, a cloakroom, a gorgeous natural light filled open plan kitchen/ living room with feature roof windows and bi-folding doors out to the patio and garden. The upper floors host four good sized bedrooms most of which have ample built-in storage, a further study/nursery and two modern bathrooms. Outside there is a large rear garden with useful rear access, additional storage and artificial grass which is a child friendly haven.

This lovely home provides the discerning buyer with fantastic long-term comfort knowing the house is in excellent condition throughout. The property is also ideally located for outstanding local schools including Thomson House and for the areas extensive leisure and shopping amenities including Waitrose and various independent boutique shops, restaurants, gastro pubs and coffee shops. Mortlake station is within easy walking distance as are numerous bus routes to neighbouring towns.



















# Church Avenue

Approximate Gross Internal Area = 1680 sq ft / 156.2 sq m  
(Including Reduced Headroom / Eaves / Store)  
Reduced Headroom / Eaves = 145 sq ft / 13.4 sq m  
Store = 32 sq ft / 3 sq m

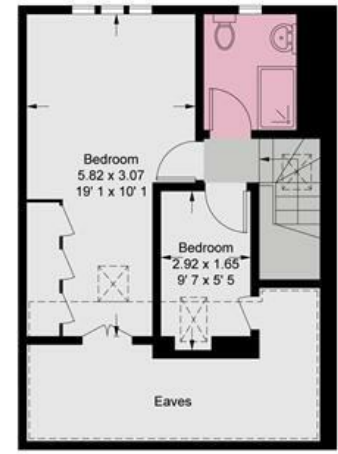


JAMES  
ANDERSON

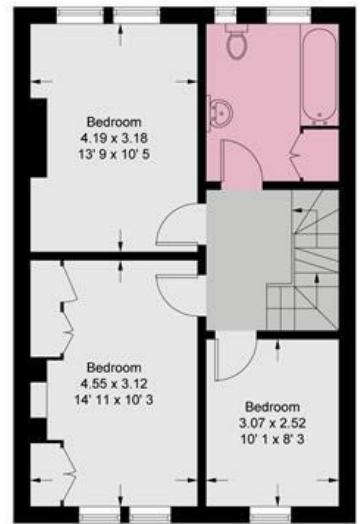
= Reduced headroom below 1.5m / 5'0"



Ground Floor  
653 sq ft / 60.7 sq m



Second Floor  
455 sq ft / 42.3 sq m  
(Including Reduced Headroom / Eaves)



First Floor  
540 sq ft / 50.2 sq m



JAMES  
ANDERSON

This plan is not to scale and must be used as layout guidance only. All measurements and areas are approximate and should not be relied upon to provide accurate information. This plan must not be relied upon when making property valuations, design considerations or any other such relevant decisions. We accept no responsibility or liability (whether in contract, tort or otherwise) in relation to any loss whatsoever arising from or in connection with any use of this plan or the adequacy, accuracy or completeness of it or any information within it.





363 Upper Richmond Road West  
East Sheen  
SW14 7NX

020 8876 6611  
sales@jasheen.co.uk  
www.jamesanderson.co.uk

