



**JAMES
ANDERSON**



TO LET

Lower Richmond Road, Mortlake, SW14

£1,250 Per Month

Per Month

The property boasts a studio style reception and bedroom with wooden flooring, neutral decor and views over the playing fields opposite. The fully fitted kitchen offers plenty of storage and worktop space for cooking. The three piece bathroom is in good order and with white tiling throughout. In addition tenants have use of the rear garden which has been separated into private areas. The River Thames, Richmond Park and Richmond Town Centre are all very local to the property. Mortlake Station is very close by and provides links to Waterloo in 23 minutes.



First Floor Studio



One Bathroom



Furnished



Fully Fitted Kitchen



EPC C | Council Tax C | Holding Deposit £288.46



Close to Mortlake Station



Close to Nearby Schools



Private Garden



Wooden Floors Throughout

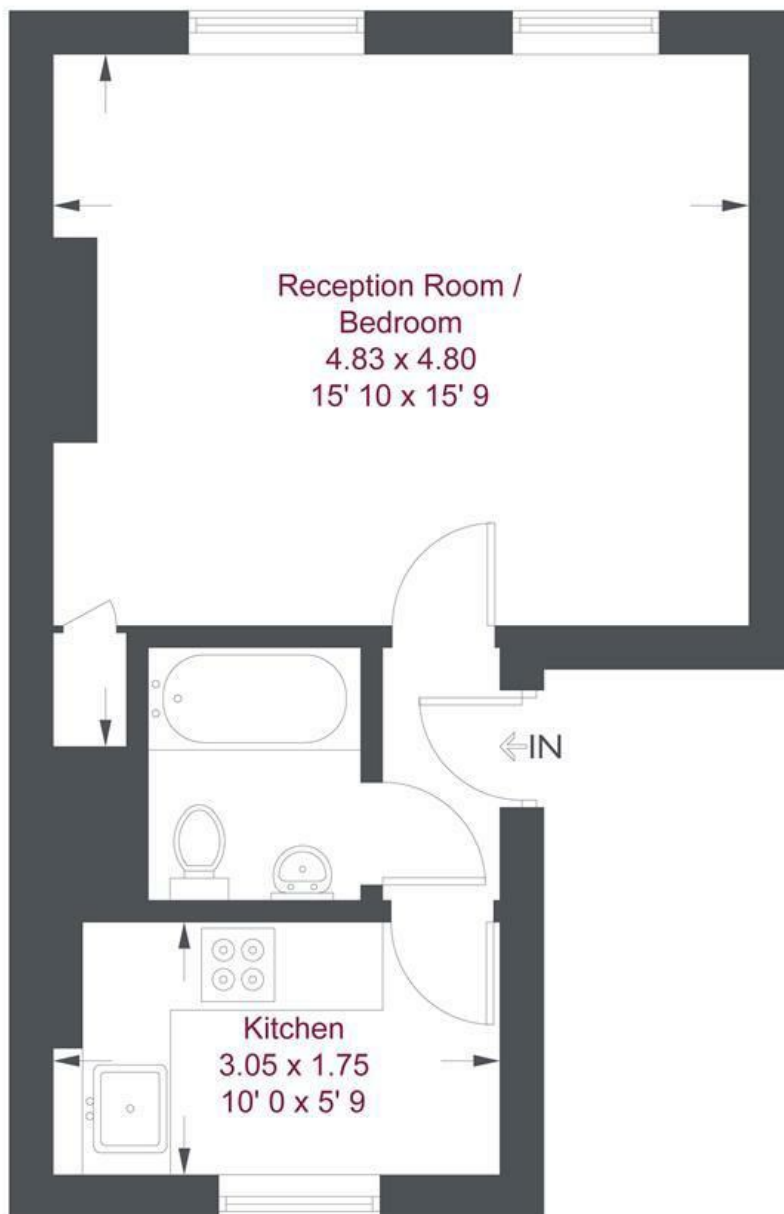


Deposit £1442.30 | Minimum Term 12 Months



OPEN 7 DAYS A WEEK • Weekdays until 9pm • Weekends until 5pm

0208 876 6611



First Floor

Lower Richmond Road

Approximate Gross Internal Area = 334 sq ft / 31 sq m

Not to scale, for guidance only and must not be relied upon as a statement of fact
 All measurements and areas are approximate only and have been prepared in accordance with the current edition of the RICS Code of Measuring Practice

Energy Efficiency Rating		
	Current	Potential
<i>Very energy efficient - lower running costs</i>		
(92 plus) A		
(81-91) B		
(69-80) C		
(55-68) D		
(39-54) E		
(21-38) F		
(1-20) G		
<i>Not energy efficient - higher running costs</i>		
England & Wales	EU Directive 2002/91/EC	

Environmental Impact (CO ₂) Rating		
	Current	Potential
<i>Very environmentally friendly - lower CO2 emissions</i>		
(92 plus) A		
(81-91) B		
(69-80) C		
(55-68) D		
(39-54) E		
(21-38) F		
(1-20) G		
<i>Not environmentally friendly - higher CO2 emissions</i>		
England & Wales	EU Directive 2002/91/EC	

