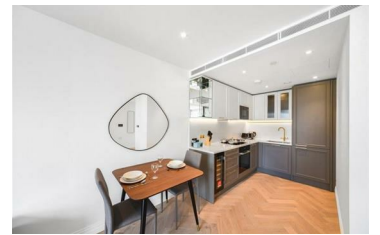
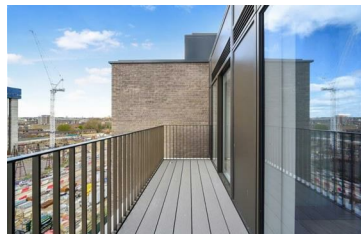




**JAMES  
ANDERSON**



## TO LET











2 Bridgewater Avenue, London, SW6

**£2,491 Per Month**

Per Month

Brand new spacious studio apartment with a balcony in Chelsea Creek, the sought-after development in Fulham's riverside. The property is finished to a high standard and benefits from a generous open-plan kitchen/living room/sleeping area, and a marble-tiled bathroom.

Residents benefit from close transport links, a 24-hour concierge, communal gym, swimming pool and spa. The development is located very close to many local amenities including restaurants, bars, cafes & shops on King's Road and at Fulham Broadway. Imperial Wharf Overground Station is located within a short walk and provides a fast link to destinations across London.

-  Large Studio / 1 bedrooms
-  Modern Bathroom
-  Open Place Reception
-  Modern Kitchen
-  EPC B / Council Tax TBC / Holding Deposit £549.92
-  Imperial Wharf
-  On Site Gym and Concierge
-  River Thames
-  Swimming Pool
-  Minimum Term 12 Months / Deposit £2874



OPEN 7 DAYS A WEEK • Weekdays until 9pm • Weekends until 5pm

**0208 785 4400**

