



JAMES
ANDERSON



TO LET

Second Avenue, Mortlake, SW14

£1,950 Per Month

Per Month

LET AGREED - This ground floor maisonette is arranged to provide two double bedrooms, a reception room with bay window, a kitchen/breakfast room and a bathroom. The property is enhanced by a shared west facing garden. Second Avenue is conveniently placed for the amenities of White Hart Lane and Barnes Village. For the commuter Barnes Bridge station is a short walk away.



Two Double Bedroom Maisonette



Modern Bathroom



Bright Reception Room



Eat In Kitchen



EPC Rating D / Council Tax D / Deposit £2,250



Barnes Bridge Station



Barnes Primary



White Hart Lane



Shared Garden



Holding Deposit £450 / 12 month Minimum Term

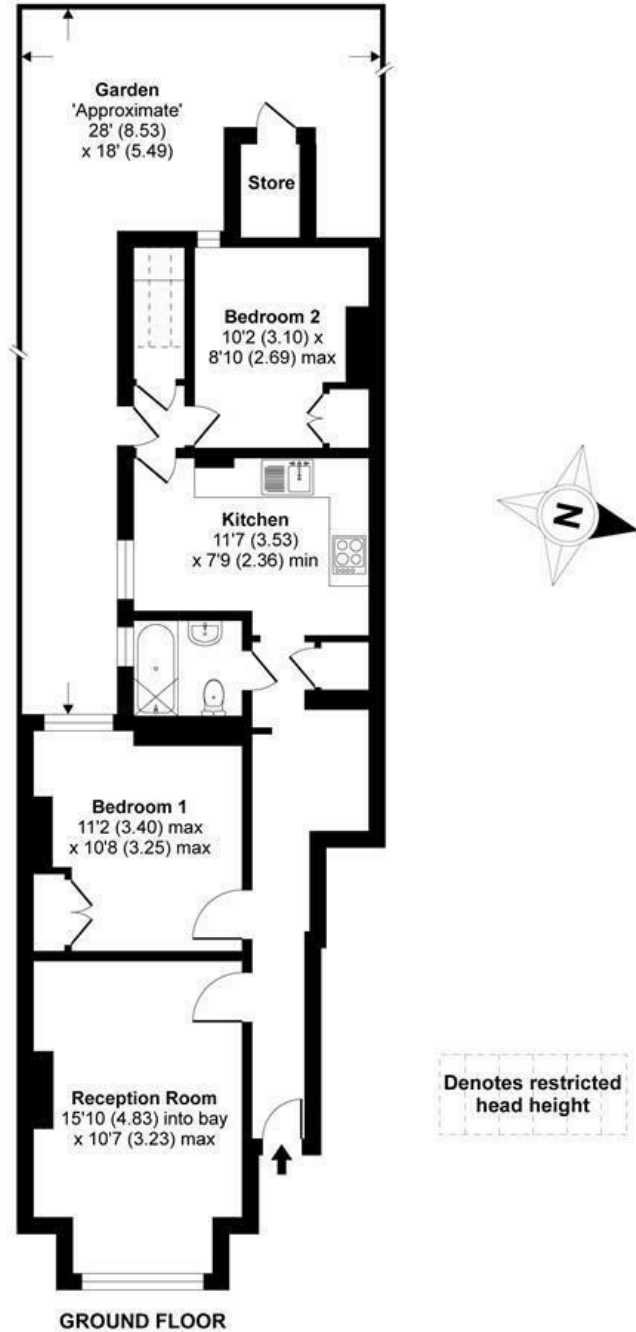


OPEN 7 DAYS A WEEK • Weekdays until 9pm • Weekends until 5pm

0208 878 8688

Second Avenue, London, SW14

APPROX. GROSS INTERNAL FLOOR AREA 693 SQ FT 64.4 SQ METRES



GROUND FLOOR

Whilst every attempt has been made to ensure the accuracy of the floor plan contained here, measurements of doors, windows and rooms are approximate and no responsibility is taken for any error, omission or misstatement. These plans are for representation purposes only as defined by RICS Code of Measuring Practice and should be used as such by any prospective purchaser. Specifically no guarantee is given on the total square footage of the property if quoted on this plan. Any figure given is for initial guidance only and should not be relied on as a basis of valuation.

Copyright nichecom.co.uk 2018 Produced for James Anderson REF : 259516

Energy Efficiency Rating		Current	Potential
<i>Very energy efficient - lower running costs</i>			
(92 plus) A			
(81-91) B			
(69-80) C			
(55-68) D			
(39-54) E			
(21-38) F			
(1-20) G			
<i>Not energy efficient - higher running costs</i>			
England & Wales	EU Directive 2002/91/EC		

Environmental Impact (CO ₂) Rating		Current	Potential
<i>Very environmentally friendly - lower CO2 emissions</i>			
(92 plus) A			
(81-91) B			
(69-80) C			
(55-68) D			
(39-54) E			
(21-38) F			
(1-20) G			
<i>Not environmentally friendly - higher CO2 emissions</i>			
England & Wales	EU Directive 2002/91/EC		

