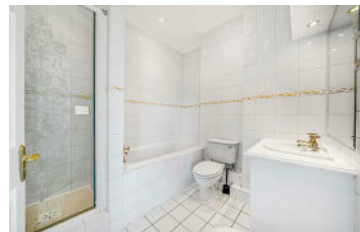




**JAMES
ANDERSON**



TO LET

Wyatt Drive, Barnes, SW13

£4,500 Per Month

Per Month

A fantastic four bedroom family home on the prestigious Wyatt Drive. This home spans approximately 1864 sq ft of well presented living space, complemented by a conservatory that opens out to a delightful west-facing garden, as well as a utility room and the convenience of off-street parking for two vehicles.

This family home is conveniently located for the outstanding schools and green spaces on offer in Barnes as well as the amenities and transport links in Hammersmith.



Four Bedroom House



Three Bathrooms and Guest W.C.



Bright Reception Room



Spacious Kitchen Diner



EPC C / Council Tax H / Deposit £5,192.30



Hammersmith Tube



St Pauls School



Excellent Transport Links



Private Garden

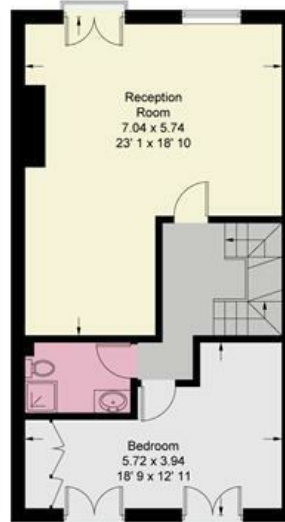
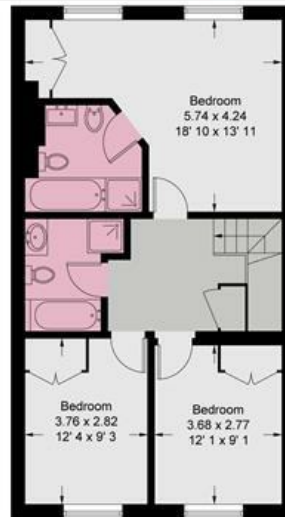


12 Month Minimum Term / Holding Deposit £1,038.46



OPEN 7 DAYS A WEEK • Weekdays until 9pm • Weekends until 5pm

0208 878 8688



This plan is not to scale and must be used as layout guidance only. All measurements and areas are approximate and should not be relied upon to provide accurate information. This plan must not be relied upon when making property valuations, design considerations or any other such relevant decisions. We accept no responsibility or liability (whether in contract, tort or otherwise) in relation to any loss whatsoever arising from or in connection with any use of this plan or the adequacy, accuracy or completeness of it or any information within it.



Energy Efficiency Rating		Current	Potential
Very energy efficient - lower running costs			
(92 plus) A			
(81-91) B			
(69-80) C			
(55-68) D			
(39-54) E			
(21-38) F			
(1-20) G			
Not energy efficient - higher running costs			
England & Wales	EU Directive 2002/91/EC	72	80

Environmental Impact (CO ₂) Rating		Current	Potential
Very environmentally friendly - lower CO ₂ emissions			
(92 plus) A			
(81-91) B			
(69-80) C			
(55-68) D			
(39-54) E			
(21-38) F			
(1-20) G			
Not environmentally friendly - higher CO ₂ emissions			
England & Wales	EU Directive 2002/91/EC		

