



JAMES
ANDERSON



TO LET

Wimbledon Park Road, London, SW18

£2,000 Per Month

Per Month

Located within a residential area overlooking a Green and within easy access of Southfields, Putney and Wandsworth is this conversion apartment found on the lower ground floor. The flat is decorated to a good standard throughout. Benefits include a double bedroom serviced by a well-appointed bathroom. A sitting room with open fireplace leading to a fitted kitchen. The kitchen has been fitted to a high specification with a number of fitted appliances. The rear communal garden offers a further great entertaining space in the summer.



One Bedroom



Modern Bathroom



Open Plan Reception



Modern Kitchen



EPC C / Council Tax C / Holding Deposit £461.53



Southfield Tube



Communal Garden



Furnished



Available January

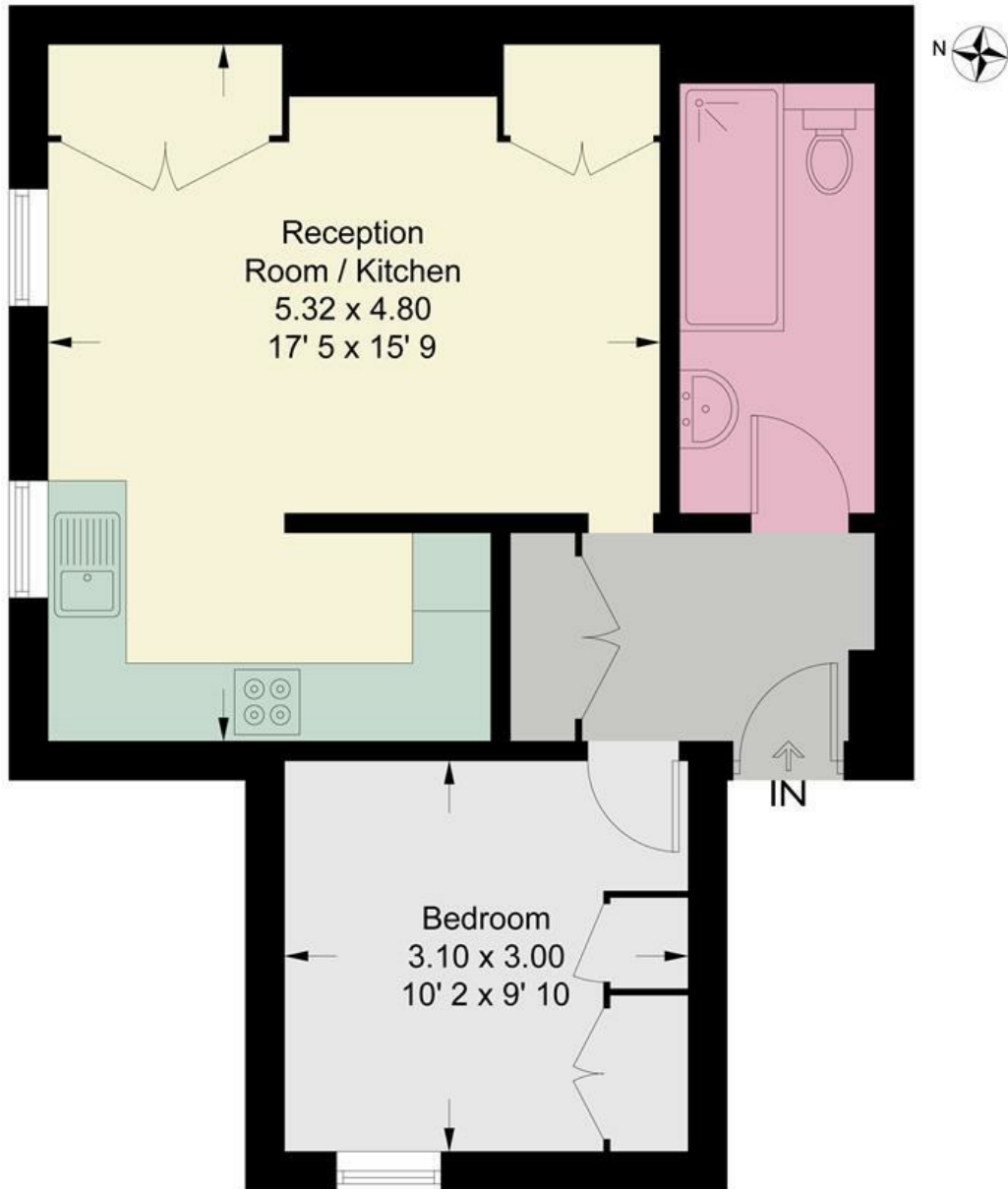


Minimum Term 12 Months / Deposit £2307.69



OPEN 7 DAYS A WEEK • Weekdays until 9pm • Weekends until 5pm

0208 785 4400



Lower Ground Floor

This plan is not to scale and must be used as layout guidance only. All measurements and areas are approximate and should not be relied upon to provide accurate information. This plan must not be relied upon when making property valuations, design considerations or any other such relevant decisions. We accept no responsibility or liability (whether in contract, tort or otherwise) in relation to any loss whatsoever arising from or in connection with any use of this plan or the adequacy, accuracy or completeness of it or any information within it.



Energy Efficiency Rating		Current	Potential
Very energy efficient - lower running costs			
(92 plus) A			
(81-91) B			
(69-80) C			
(55-68) D			
(39-54) E			
(21-38) F			
(1-20) G			
Not energy efficient - higher running costs			
England & Wales	EU Directive 2002/91/EC		

Environmental Impact (CO ₂) Rating		Current	Potential
Very environmentally friendly - lower CO ₂ emissions			
(92 plus) A			
(81-91) B			
(69-80) C			
(55-68) D			
(39-54) E			
(21-38) F			
(1-20) G			
Not environmentally friendly - higher CO ₂ emissions			
England & Wales	EU Directive 2002/91/EC		

