



**JAMES
ANDERSON**



TO LET

Hotham Road, Putney, SW15

£2,200 Per Month

Per Month

A beautifully presented two bedroom Edwardian maisonette located on a prime road within West Putney. This immaculate property is located on the first floor and benefits from its own front door. Both Bedrooms are doubles, the bathroom is well presented with plenty of natural light. The kitchen was recently replaced by the current owner and includes fitted appliances, there is also space to dine within this area. The sitting room is separate, all original features remain in place and in fantastic location. Hotham Road is situated in the heart of West Putney and affords easy access to the shopping and transport facilities of the Lower Richmond Road and Central Putney. Putney Bridge Underground and Putney Mainline are found just a ten minute walk away. There are numerous local bus routes providing easy access into the City and West End. The River Thames Embankment and Putney Common are close by.



Two Double Bedrooms



Modern Bathroom



Bright Reception Room



Modern Kitchen / Diner



EPC E / Council Tax D / Holding Deposit: £507.69



Putney Train Station



Hotham Primary



West Putney



Furnished



Minimum Term 12 months / Deposit £2538.46

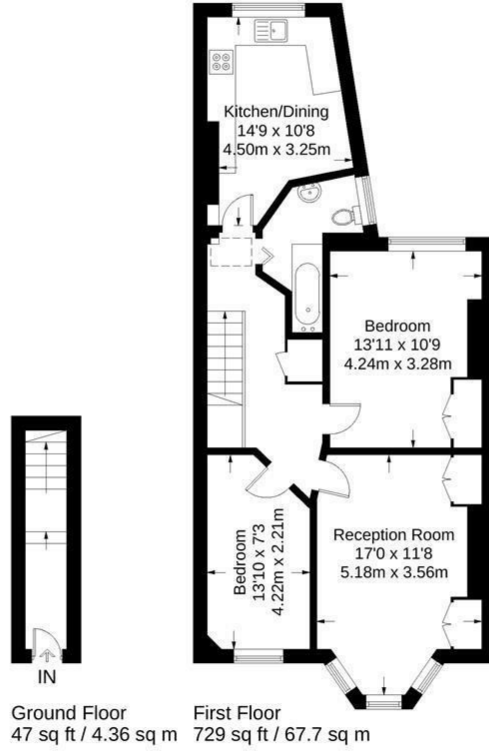


OPEN 7 DAYS A WEEK • Weekdays until 9pm • Weekends until 5pm

0208 785 4400

Hotham Road

Approximate Gross Internal Area = 776 sq ft / 72 sq m



Not to scale, for guidance only and must not be relied upon as a statement of fact. All measurements and areas are approximate only and have been prepared in accordance with the current edition of the RICS Code of Measuring Practice.

