



JAMES
ANDERSON



TO LET

Keswick Road, Putney, SW15

£1,800 Per Month

Per Month

Lovely one bedroom apartment to rent with private balcony and communal roof terrace. The property has been recently refurbished and comprises a bright reception room with private balcony, good sized double bedroom and a modern kitchen and bathroom.

Millbrooke Court is located on the Upper Richmond Road in East Putney and very close to Putney High Street, where there are good local shops and restaurants. East Putney underground (District) is moments from the property, there are excellent schools, both state and private in the neighbourhood.



One Double Bedroom



Modern Bathroom



One Reception Room



Modern Kitchen



EPC D / Council Tax D / Holding Deposit £415.38



East Putney Tube



Putney High



Balcony



Communal Roof Terrace



Minimum Term 12 Months / Deposit £2076.92

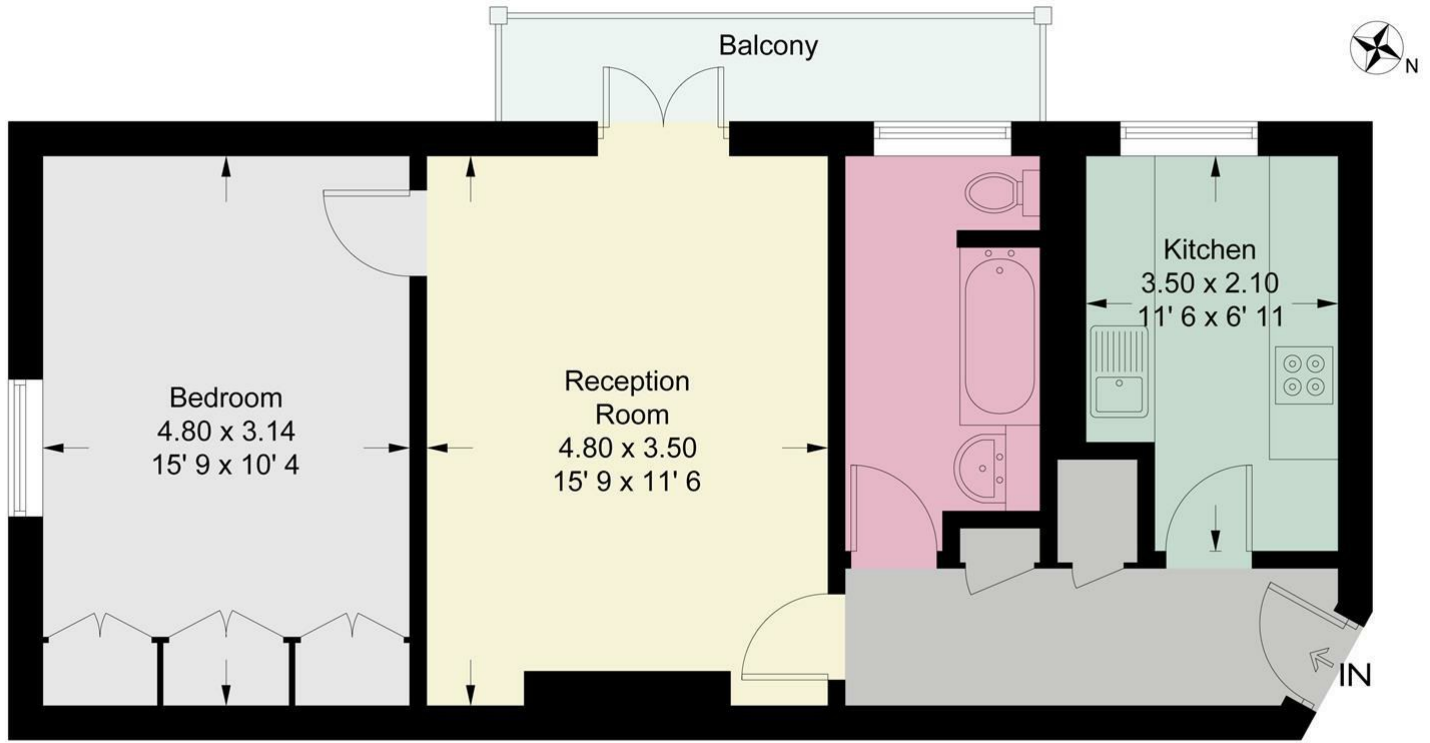


OPEN 7 DAYS A WEEK • Weekdays until 9pm • Weekends until 5pm

0208 785 4400

Millbrooke Court

Approximate Gross Internal Area = 584 sq ft / 54.3 sq m



Second Floor

This plan is not to scale and must be used as layout guidance only. All measurements and areas are approximate and should not be relied upon to provide accurate information. This plan must not be relied upon when making property valuations, design considerations or any other such relevant decisions. We accept no responsibility or liability (whether in contract, tort or otherwise) in relation to any loss whatsoever arising from or in connection with any use of this plan or the adequacy, accuracy or completeness of it or any information within it.



Energy Efficiency Rating		Current	Potential
Very energy efficient - lower running costs			
(92 plus) A			
(81-91) B			
(69-80) C			
(55-68) D			
(39-54) E			
(21-38) F			
(1-20) G			
Not energy efficient - higher running costs			
England & Wales	EU Directive 2002/91/EC		

Environmental Impact (CO ₂) Rating		Current	Potential
Very environmentally friendly - lower CO ₂ emissions			
(92 plus) A			
(81-91) B			
(69-80) C			
(55-68) D			
(39-54) E			
(21-38) F			
(1-20) G			
Not environmentally friendly - higher CO ₂ emissions			
England & Wales	EU Directive 2002/91/EC		

