



**JAMES
ANDERSON**



TO LET

Schubert Road, Putney, SW15

£1,800 Per Month

Per Month

A charming bay-fronted one bedroom lower ground floor conversion flat with private patio garden. The property comprises generously sized reception room, separate dining area, bedroom with built in wardrobes, fitted kitchen with appliances and a shower room. The property also benefits from a small private patio area. Ideally located within easy walking distance of East Putney tube station and all of the amenities on Putney High Street.



One Bedroom



Period Property



Private Patio



Generous Reception Room



Separate Dining Area



Fitted Kitchen



Shower Room



Close to Amenities



OPEN 7 DAYS A WEEK • Weekdays until 9pm • Weekends until 5pm

0208 785 4400

Schubert Road

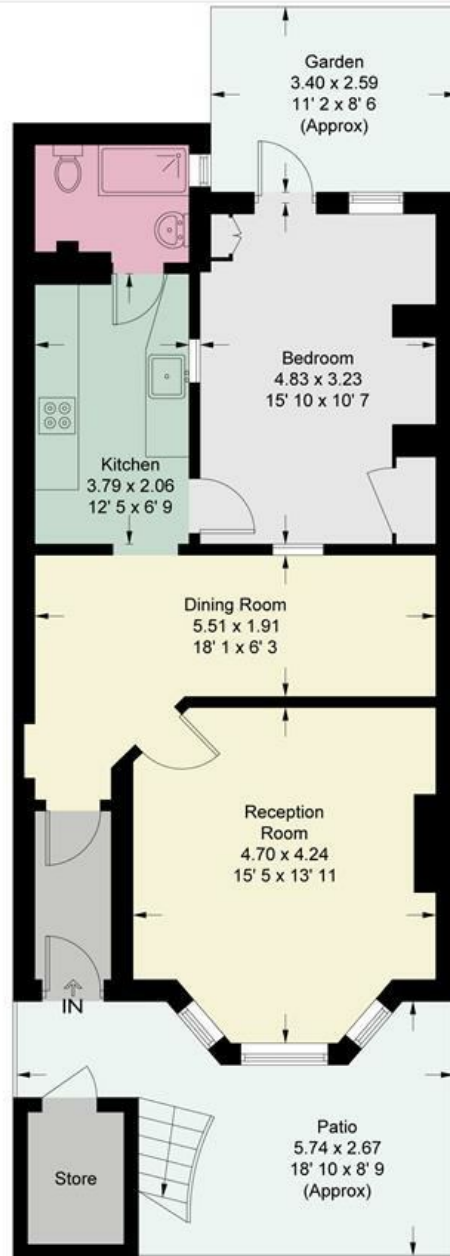
Approximate Gross Internal Area = 696 sq ft / 64.7 sq m

Store = 27 sq ft / 2.5 sq m

Total = 723 sq ft / 67.2 sq m



**JAMES
ANDERSON**



Lower Ground Floor

This plan is not to scale and must be used as layout guidance only. All measurements and areas are approximate and should not be relied upon to provide accurate information. This plan must not be relied upon when making property valuations, design considerations or any other such relevant decisions. We accept no responsibility or liability (whether in contract, tort or otherwise) in relation to any loss whatsoever arising from or in connection with any use of this plan or the adequacy, accuracy or completeness of it or any information within it.



Energy Efficiency Rating		Current	Potential
<i>Very energy efficient - lower running costs</i>			
(92 plus) A			
(81-91) B			
(69-80) C			
(55-68) D			
(39-54) E			
(21-38) F			
(1-20) G			
<i>Not energy efficient - higher running costs</i>			
England & Wales	EU Directive 2002/91/EC	73	80

Environmental Impact (CO ₂) Rating		Current	Potential
<i>Very environmentally friendly - lower CO₂ emissions</i>			
(92 plus) A			
(81-91) B			
(69-80) C			
(55-68) D			
(39-54) E			
(21-38) F			
(1-20) G			
<i>Not environmentally friendly - higher CO₂ emissions</i>			
England & Wales	EU Directive 2002/91/EC		

