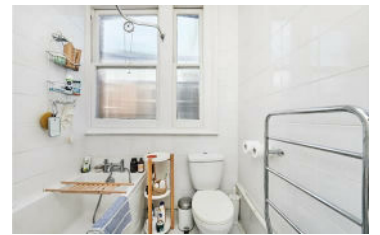




**JAMES  
ANDERSON**



## TO LET

Elm Bank Mansions, Barnes, SW13

## £1,500 Per Month

Per Month

Located in a sought after mansion block development, is a well presented one bedroom apartment. The accommodation comprises one double bedroom with built in wardrobes, reception room with wooden flooring, fitted bathroom and a fitted kitchen with appliances. Elm Bank Mansions is located opposite the River Thames, moments from Barnes Bridge Station and within a few minutes walk of Barnes Village.



One Bedroom



Fitted Bathroom



Bright Reception



Kitchen



EPC D/ Council Tax Band C / Deposit £1,730.76



Barnes Bridge Station



Outstanding Local Schools



Top Floor Apartment



Wooden Floors



12 Month Minimum Term / Holding deposit £346.15



OPEN 7 DAYS A WEEK • Weekdays until 9pm • Weekends until 5pm

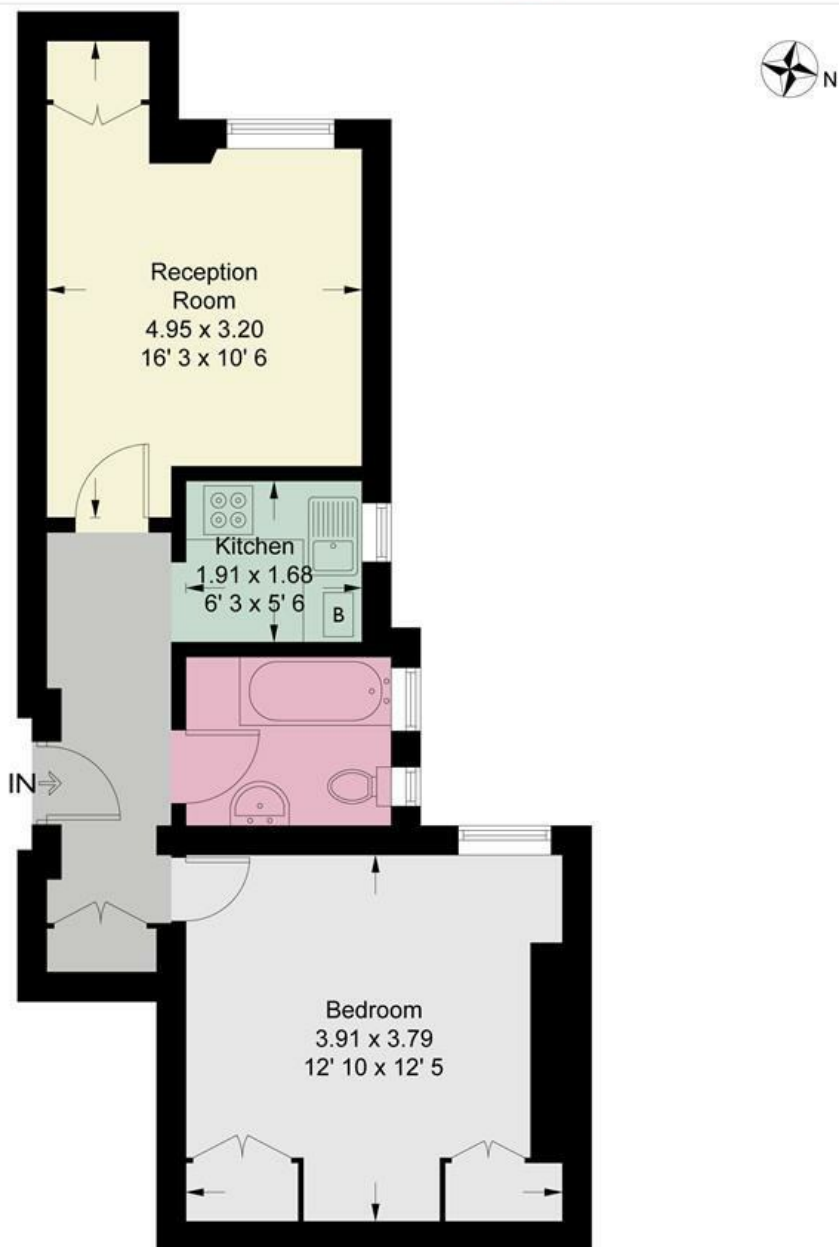
0208 878 8688

# Elm Bank Mansions

Approximate Gross Internal Area = 456 sq ft / 42.4 sq m



JAMES ANDERSON



Fourth Floor

This plan is not to scale and must be used as layout guidance only. All measurements and areas are approximate and should not be relied upon to provide accurate information. This plan must not be relied upon when making property valuations, design considerations or any other such relevant decisions. We accept no responsibility or liability (whether in contract, tort or otherwise) in relation to any loss whatsoever arising from or in connection with any use of this plan or the adequacy, accuracy or completeness of it or any information within it.



Energy Efficiency Rating		Current	Potential
<i>Very energy efficient - lower running costs</i>			
(92 plus) <b>A</b>			
(81-91) <b>B</b>			
(69-80) <b>C</b>			
(55-68) <b>D</b>			
(39-54) <b>E</b>			
(21-38) <b>F</b>			
(1-20) <b>G</b>			
<i>Not energy efficient - higher running costs</i>			
<b>England &amp; Wales</b>	EU Directive 2002/91/EC		

Environmental Impact (CO <sub>2</sub> ) Rating		Current	Potential
<i>Very environmentally friendly - lower CO2 emissions</i>			
(92 plus) <b>A</b>			
(81-91) <b>B</b>			
(69-80) <b>C</b>			
(55-68) <b>D</b>			
(39-54) <b>E</b>			
(21-38) <b>F</b>			
(1-20) <b>G</b>			
<i>Not environmentally friendly - higher CO2 emissions</i>			
<b>England &amp; Wales</b>	EU Directive 2002/91/EC		

