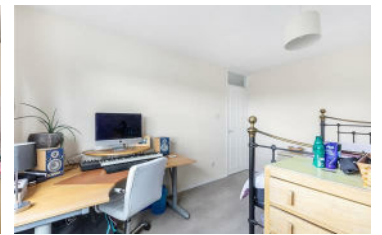




**JAMES
ANDERSON**



TO LET

Barnes High Street, Barnes, SW13

£2,150 Per Month

Per Month

This bright apartment is located on Barnes High Street just moments from Barnes Pond and the wonderful amenities of the high street. This home benefits from a rear terrace, two large double bedrooms, a modern kitchen, bathroom and a spacious reception room. Barnes Station (25mins to Waterloo) and Barnes Bridge Station (26 mins to Waterloo) are both under 0.6 miles from the property.



Two Double Bedrooms



Fitted Bathroom



Bright Reception Room



Modern Kitchen



EPC E/ Council Tax D / Holding Deposit £496.15



Barnes Bridge Station



St Osmunds Primary School



Central Barnes



ROOF TERRACE



Deposit £2480.76 / Minimum Term 12 months



OPEN 7 DAYS A WEEK • Weekdays until 9pm • Weekends until 5pm

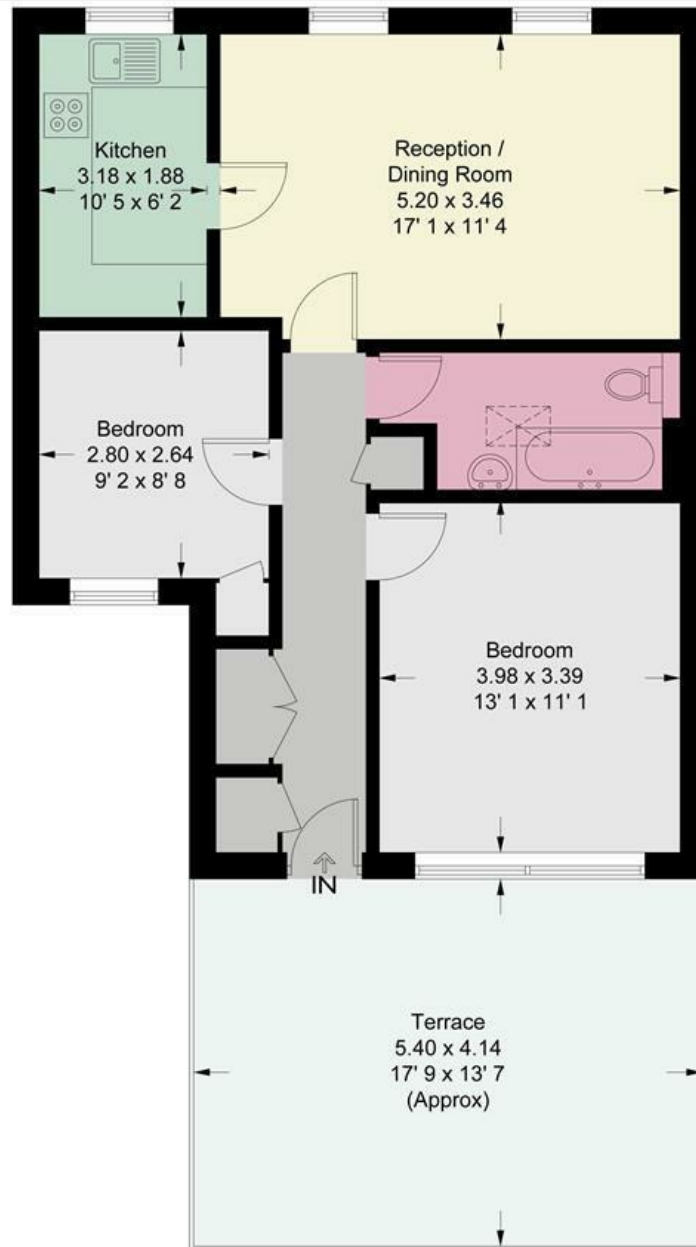
0208 878 8688

Barnes High Street

Approximate Gross Internal Area = 657 sq ft / 61 sq m



JAMES ANDERSON



Second Floor

This plan is not to scale and must be used as layout guidance only. All measurements and areas are approximate and should not be relied upon to provide accurate information. This plan must not be relied upon when making property valuations, design considerations or any other such relevant decisions. We accept no responsibility or liability (whether in contract, tort or otherwise) in relation to any loss whatsoever arising from or in connection with any use of this plan or the adequacy, accuracy or completeness of it or any information within it.



Energy Efficiency Rating		Current	Potential
<i>Very energy efficient - lower running costs</i>			
(92 plus) A			 75
(81-91) B			
(69-80) C			
(55-68) D			
(39-54) E		41	
(21-38) F			
(1-20) G			
<i>Not energy efficient - higher running costs</i>			
England & Wales		EU Directive 2002/91/EC	

Environmental Impact (CO ₂) Rating		Current	Potential
<i>Very environmentally friendly - lower CO2 emissions</i>			
(92 plus) A			 58
(81-91) B			
(69-80) C			
(55-68) D			
(39-54) E		40	
(21-38) F			
(1-20) G			
<i>Not environmentally friendly - higher CO2 emissions</i>			
England & Wales		EU Directive 2002/91/EC	

