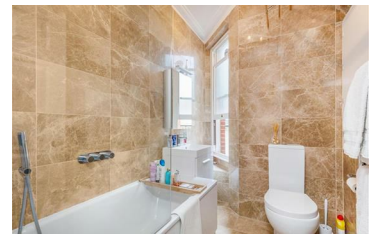




**JAMES
ANDERSON**



TO LET

Elm Bank Mansions, London, SW13

£2,000 Per Month

Per Month

A fabulous apartment located in a popular Edwardian mansion block. This lovely home is located on the first floor and benefits from charm and character providing a large double bedroom, a modern bathroom, a modern fitted kitchen with integrated appliances and a wonderful bay fronted reception room with feature fireplace. Elm Bank Mansions is a highly regarded apartment building, conveniently located for the amenities of Barnes Village and Barnes Bridge Station.



Large Double Bedroom



Immaculate Bathroom



Spacious Reception Room



Modern Kitchen



EPC D / Council Tax D / Deposit £2,307.69



Barnes Bridge Station



Excellent Local Schools



River Thames



Central Barnes Location

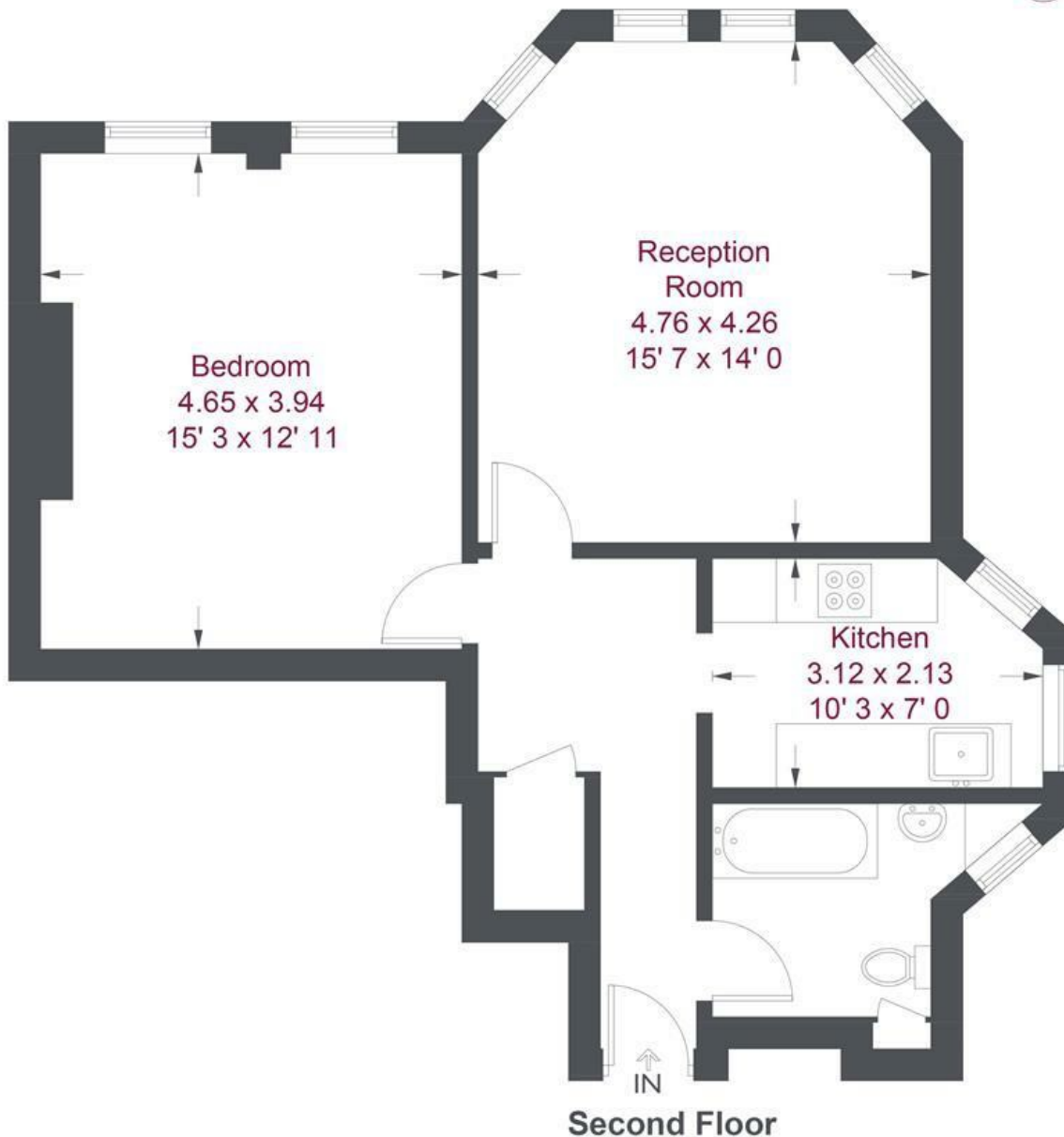


Holding Deposit £461.53 / 12 Month Minimum Term



OPEN 7 DAYS A WEEK • Weekdays until 9pm • Weekends until 5pm

0208 878 8688



Second Floor

Elm Bank Mansions

Approximate Gross Internal Area = 652 sq ft / 60.6 sq m

Not to scale, for guidance only and must not be relied upon as a statement of fact
 All measurements and areas are approximate only and have been prepared in accordance with the current edition of the RICS Code of Measuring Practice

Energy Efficiency Rating		Current	Potential
Very energy efficient - lower running costs			
(92 plus) A			
(81-91) B			
(69-80) C			
(55-68) D			
(39-54) E			
(21-38) F			
(1-20) G			
Not energy efficient - higher running costs			
England & Wales		EU Directive 2002/91/EC	

Environmental Impact (CO ₂) Rating		Current	Potential
Very environmentally friendly - lower CO ₂ emissions			
(92 plus) A			
(81-91) B			
(69-80) C			
(55-68) D			
(39-54) E			
(21-38) F			
(1-20) G			
Not environmentally friendly - higher CO ₂ emissions			
England & Wales		EU Directive 2002/91/EC	

