



**JAMES  
ANDERSON**



## TO LET

Elm Bank Mansions, London, SW13

## £2,000 Per Month

Per Month

A fabulous apartment located in a popular Edwardian mansion block. This lovely home is located on the first floor and benefits from charm and character providing a large double bedroom, a modern bathroom, a modern fitted kitchen with integrated appliances and a wonderful bay fronted reception room with feature fireplace. Elm Bank Mansions is a highly regarded apartment building, conveniently located for the amenities of Barnes Village and Barnes Bridge Station.



Large Double Bedroom



Immaculate Bathroom



Spacious Reception Room



Modern Kitchen



EPC D / Council Tax D / Deposit £2,307.69



Barnes Bridge Station



Excellent Local Schools



River Thames



Central Barnes Location

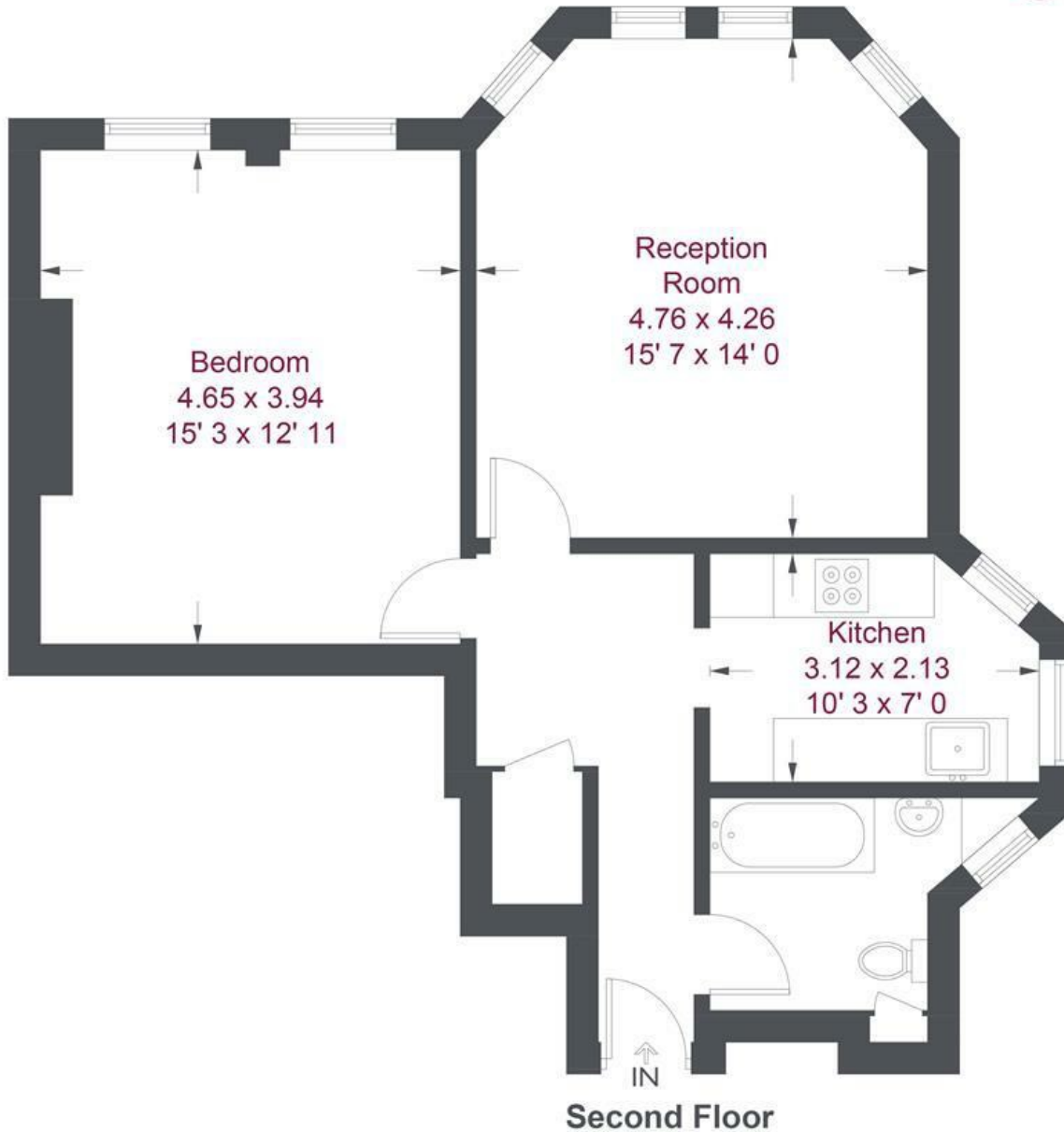


Holding Deposit £461.53 / 12 Month Minimum Term



OPEN 7 DAYS A WEEK • Weekdays until 9pm • Weekends until 5pm

0208 878 8688



## Elm Bank Mansions

Approximate Gross Internal Area = 652 sq ft / 60.6 sq m

Not to scale, for guidance only and must not be relied upon as a statement of fact  
 All measurements and areas are approximate only and have been prepared in accordance with the current edition of the RICS Code of Measuring Practice

