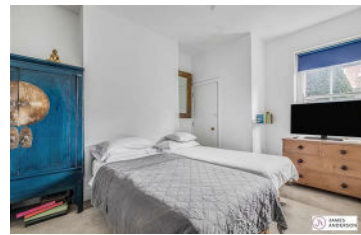




**JAMES  
ANDERSON**













## TO LET

Cowley Mansions, Mortlake, SW14

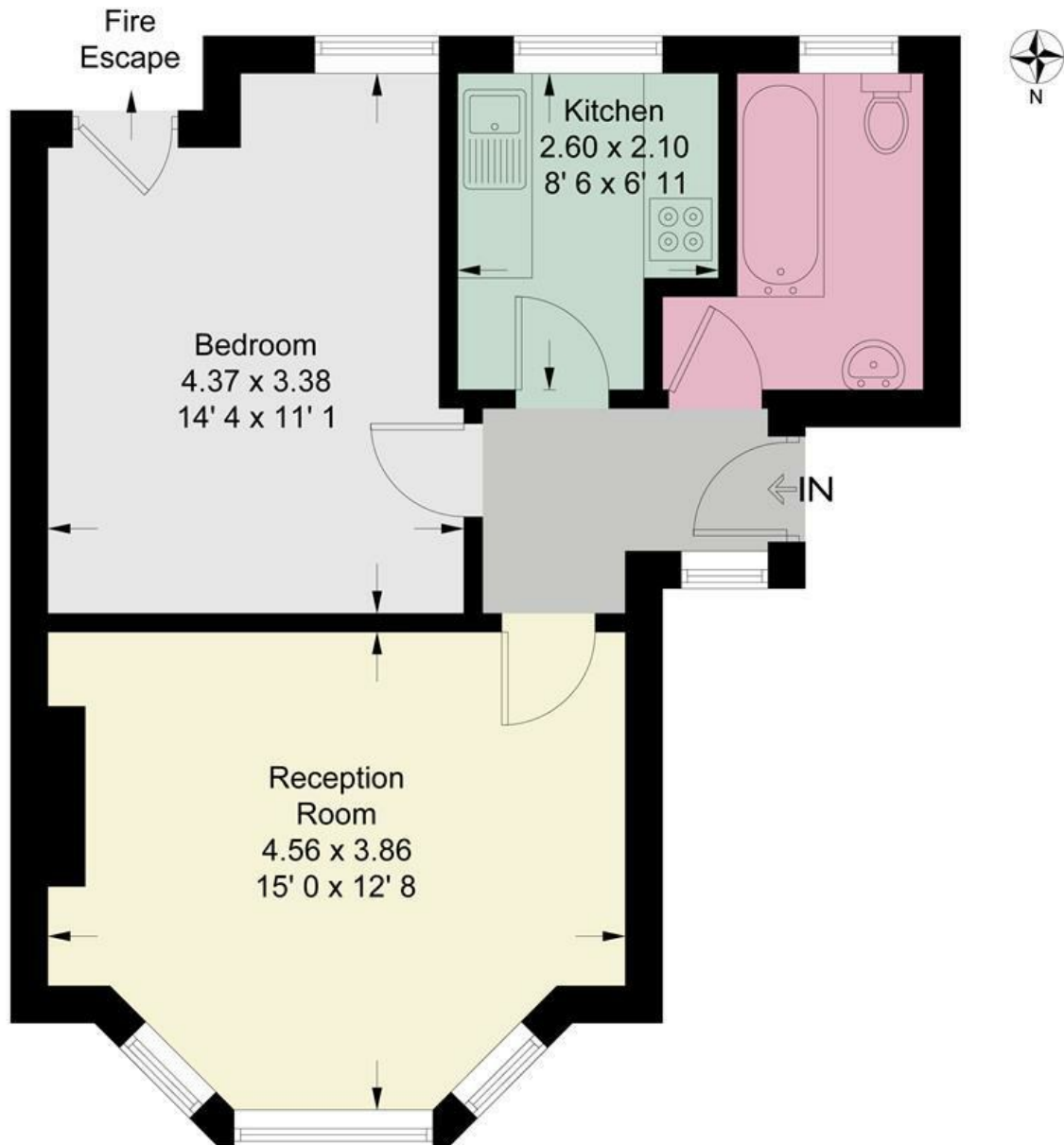
## £1,550 Per Month

Per Month

This spacious ground floor mansion flat is ideally located close to local amenities of White Hart Lane and both Barnes Bridge and Mortlake stations. The accommodation comprises bright reception room with high ceilings and one double bedroom, a modern fitted bathroom and fully fitted kitchen. In addition the property benefits from the use of a shared rear garden.

-  One Bedroom
-  Barnes Bridge Station
-  Modern Bathroom
-  Outstanding Local Schools
-  Bright Reception Room
-  White Hart Lane
-  Fitted Kitchen
-  Shared Garden
-  EPC Rating D / Council Tax C / Deposit £1,788.46
-  Holding Deposit £357.69 / Minimum Term 12 Months





## Ground Floor

This plan is not to scale and must be used as layout guidance only. All measurements and areas are approximate and should not be relied upon to provide accurate information. This plan must not be relied upon when making property valuations, design considerations or any other such relevant decisions. We accept no responsibility or liability (whether in contract, tort or otherwise) in relation to any loss whatsoever arising from or in connection with any use of this plan or the adequacy, accuracy or completeness of it or any information within it.



Energy Efficiency Rating		Current	Potential
Very energy efficient - lower running costs			
(92 plus) <b>A</b>			79
(81-91) <b>B</b>			
(69-80) <b>C</b>			
(55-68) <b>D</b>			
(39-54) <b>E</b>		62	
(21-38) <b>F</b>			
(1-20) <b>G</b>			
Not energy efficient - higher running costs			
<b>England &amp; Wales</b>		EU Directive 2002/91/EC	

Environmental Impact (CO <sub>2</sub> ) Rating		Current	Potential
Very environmentally friendly - lower CO <sub>2</sub> emissions			
(92 plus) <b>A</b>			
(81-91) <b>B</b>			
(69-80) <b>C</b>			
(55-68) <b>D</b>			
(39-54) <b>E</b>			
(21-38) <b>F</b>			
(1-20) <b>G</b>			
Not environmentally friendly - higher CO <sub>2</sub> emissions			
<b>England &amp; Wales</b>		EU Directive 2002/91/EC	

