



JAMES
ANDERSON



TO LET

Ebor Cottages, Putney, SW15

£1,700 Per Month

Per Month

A four bedroom end of terrace house to rent with private rear garden. The property comprises a large reception room, bright kitchen, two bathrooms and four bedrooms. There is also a private rear garden which backs on to Richmond Park.



Four Double Bedrooms



Three Bathrooms



Bright Reception room



Open plan Kitchen



EPC Rating E/ Council Tax Band D/Holding deposit £392.30



Putney Station



Heathmere Primary School/ Kingston University



Richmond Park



Direct Access to A3



Deposit £1,961.53

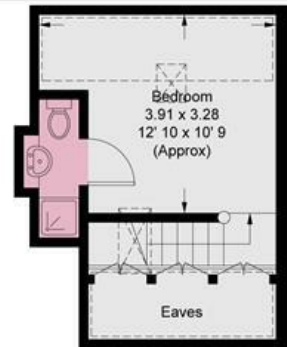
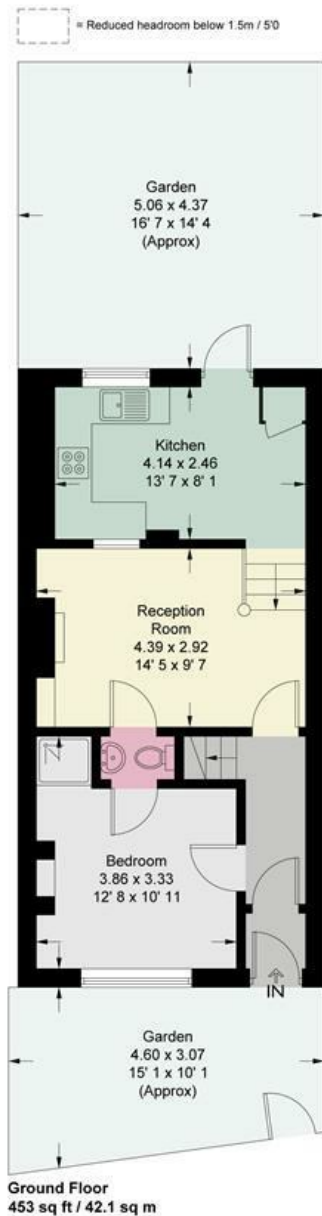


OPEN 7 DAYS A WEEK • Weekdays until 9pm • Weekends until 5pm

0208 785 4400

Ebor Cottages

Approximate Gross Internal Area = 977 sq ft / 90.7 sq m
 (Excluding Reduced Headroom / Eaves)
 Reduced Headroom / Eaves = 79 sq ft / 7.4 sq m
 Total = 1056 sq ft / 98.1 sq m



This plan is not to scale and must be used as layout guidance only. All measurements and areas are approximate and should not be relied upon to provide accurate information. This plan must not be relied upon when making property valuations, design considerations or any other such relevant decisions. We accept no responsibility or liability (whether in contract, tort or otherwise) in relation to any loss whatsoever arising from or in connection with any use of this plan or the adequacy, accuracy or completeness of it or any information within it.



Energy Efficiency Rating		Current	Potential
Very energy efficient - lower running costs			
(92 plus) A			80
(81-91) B			
(69-80) C			
(55-68) D			
(39-54) E		45	
(21-38) F			
(1-20) G			
Not energy efficient - higher running costs			
England & Wales	EU Directive 2002/91/EC		

Environmental Impact (CO ₂) Rating		Current	Potential
Very environmentally friendly - lower CO ₂ emissions			
(92 plus) A			
(81-91) B			
(69-80) C			
(55-68) D			
(39-54) E			
(21-38) F			
(1-20) G			
Not environmentally friendly - higher CO ₂ emissions			
England & Wales	EU Directive 2002/91/EC		

