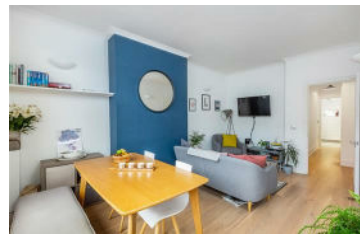




**JAMES
ANDERSON**



TO LET

£2,000 Per Month

Upper Richmond Road West, East Sheen, SW14

Per Month

Located on the corner of Portman Avenue and Upper Richmond Road West, this two bedroom property benefits from an abundance of natural light throughout. The apartment comprises an entrance hall, reception room, fitted kitchen, two double bedrooms and a modern bathroom. There's also a communal patio area at the rear. The property is ideally positioned for the extensive shopping and leisure amenities of East Sheen including Waitrose and a number of restaurants, gastro pubs and coffee shops. Mortlake station, providing direct access to London Waterloo, is within 0.3 miles. Palewell Common and Richmond Park are within 0.4 miles.



Two Double Bedrooms



Modern Bathroom



Unfurnished/Furnished



Modern Fitted Kitchen



EPC D | Council Tax C | Deposit £2307.69



Mortlake Station



East Sheen Primary School



Communal Patio Area



Lots of Natural Light

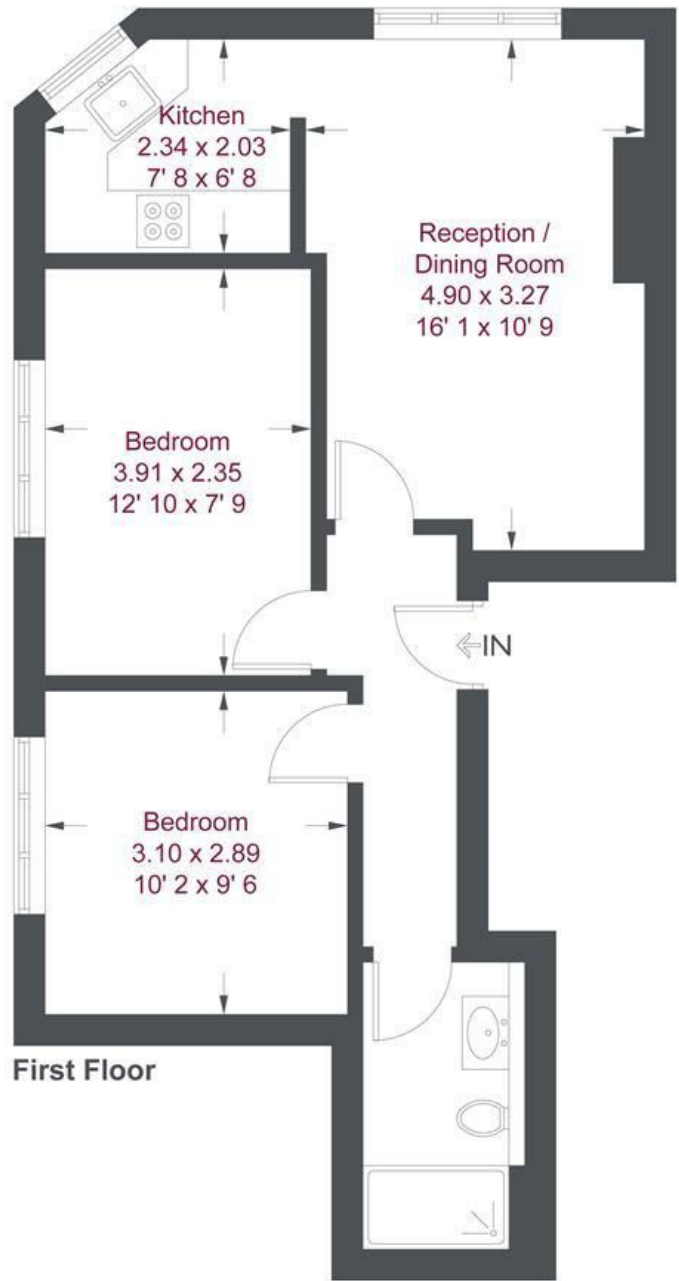


Minimum Term 12 Months | Holding Deposit £461.53



OPEN 7 DAYS A WEEK • Weekdays until 9pm • Weekends until 5pm

0208 876 6611



First Floor

Upper Richmond Road West

Approximate Gross Internal Area = 548 sq ft / 50.9 sq m

Not to scale, for guidance only and must not be relied upon as a statement of fact
 All measurements and areas are approximate only and have been prepared in accordance with the current edition of the RICS Code of Measuring Practice

Energy Efficiency Rating		
	Current	Potential
<i>Very energy efficient - lower running costs</i>		
(92 plus) A		
(81-91) B		
(69-80) C		
(55-68) D		
(39-54) E		
(21-38) F		
(1-20) G		
<i>Not energy efficient - higher running costs</i>		
	58	73
England & Wales	EU Directive 2002/91/EC	

Environmental Impact (CO ₂) Rating		
	Current	Potential
<i>Very environmentally friendly - lower CO2 emissions</i>		
(92 plus) A		
(81-91) B		
(69-80) C		
(55-68) D		
(39-54) E		
(21-38) F		
(1-20) G		
<i>Not environmentally friendly - higher CO2 emissions</i>		
	57	76
England & Wales	EU Directive 2002/91/EC	

