



JAMES  
ANDERSON



## FOR SALE

£550,000

### Queens Ride, Barnes, SW13

This exceptionally bright and spacious two-bedroom flat offers tremendous views over immaculate communal gardens. Situated on the first floor this spacious flat is well configured and offers wonderful natural light and living space.

The kitchen is open plan and fully fitted, there is a large reception room with direct access on to a private, covered balcony. Both double bedrooms include built in wardrobes followed by a modern and good sized family bathroom.

The property also offers a private garage and stunning communal grounds. It is located within minutes of Barnes Station and includes a share of the freehold. Queens Court is located on Queens Ride within close proximity to the fantastic local schools, Barnes village and National Rail services to Waterloo from Barnes Station.



Two Bedrooms



Spacious Modern Bathroom



Open Plan Reception Room



Fitted Modern Kitchen



EPC rating: D



Very Short Walk to Barnes Station



Outstanding Schools Close By



Private Balcony Overlooking Stunning Communal Gardens



Share of Freehold & Garage

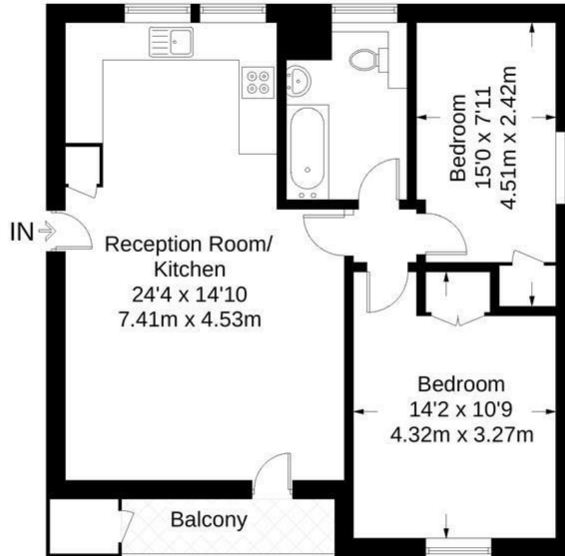


EPC Rating D



# Queens Court

Approximate Gross Internal Area = 675 sq ft / 63 sq m



First Floor

Not to scale, for guidance only and must not be relied upon as a statement of fact. All measurements and areas are approximate only and have been prepared in accordance with the current edition of the RICS Code of Measuring Practice.

