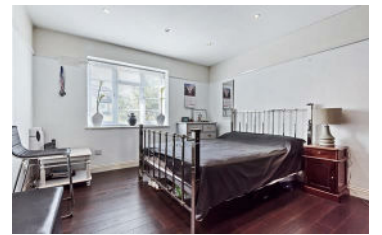




JAMES
ANDERSON








FOR SALE

£520,000

Sheen Court, Richmond, TW10

A well-proportioned two double bedroom first floor flat set within a popular and desirable residential block. The property consists of; A bright reception room with a good sized balcony overlooking attractive communal gardens, two double bedrooms, a family bathroom and a fully equipped kitchen. Sheen court is ideally situated close to Richmond and East Sheen with all the local amenities of Upper Richmond Road West and outstanding schools in the area.

-  Two Double Bedrooms
-  One Bathroom
-  One Reception Room
-  Fully Equipped Kitchen
-  EPC rating D

-  North Sheen and Richmond Stations
-  Outstanding Local Schools
-  Close to Richmond Town Centre
-  Private Balcony
-  Popular Development

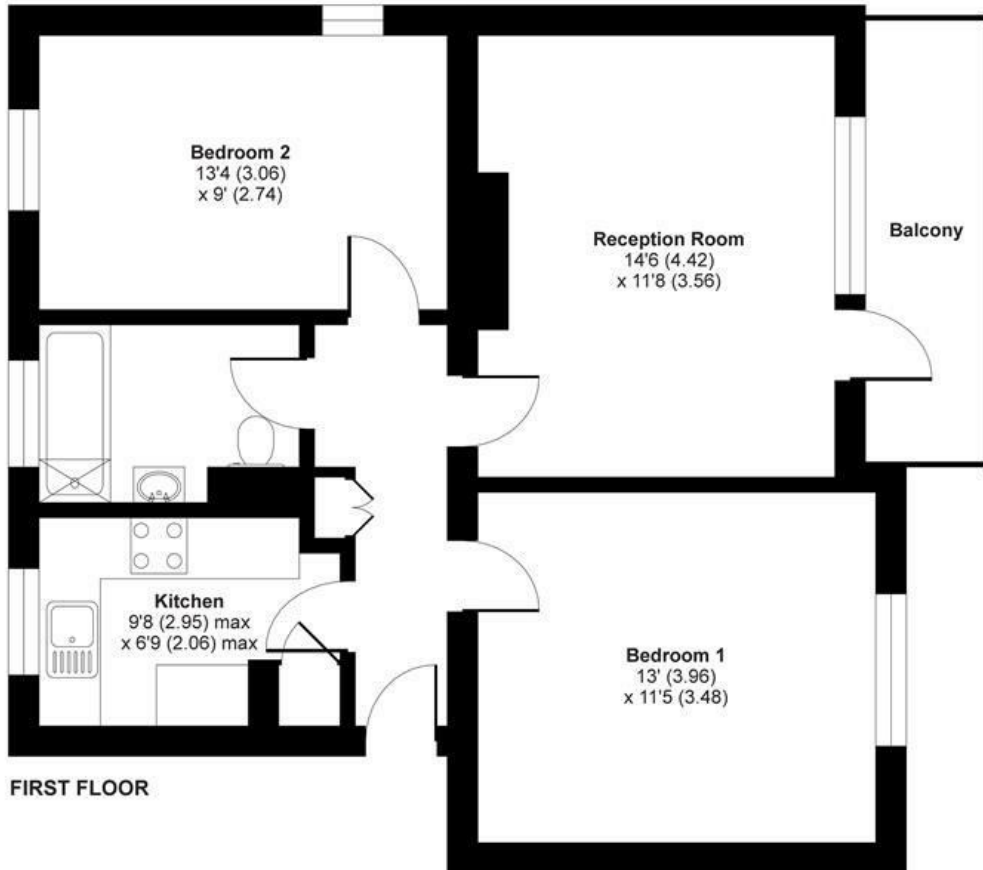


OPEN 7 DAYS A WEEK • Weekdays until 9pm • Weekends until 5pm

020 8876 6611

Sheen Court, Richmond, TW10

APPROX. GROSS INTERNAL FLOOR AREA 648 SQ FT 60.1 SQ METRES



Whilst every attempt has been made to ensure the accuracy of the floor plan contained here, measurements of doors, windows and rooms are approximate and no responsibility is taken for any error, omission or misstatement. These plans are for representation purposes only as defined by RICS Code of Measuring Practice and should be used as such by any prospective purchaser. Specifically no guarantee is given on the total square footage of the property if quoted on this plan. Any figure given is for initial guidance only and should not be relied on as a basis of valuation.

Copyright nichecom.co.uk 2019 Produced for James Anderson REF : 502892

Energy Efficiency Rating		Current	Potential
Very energy efficient - lower running costs			
(92 plus) A			
(81-91) B			
(69-80) C			
(55-68) D		63	64
(39-54) E			
(21-38) F			
(1-20) G			
Not energy efficient - higher running costs			
England & Wales	EU Directive 2002/91/EC		

Environmental Impact (CO ₂) Rating		Current	Potential
Very environmentally friendly - lower CO ₂ emissions			
(92 plus) A			
(81-91) B			
(69-80) C			
(55-68) D		55	55
(39-54) E			
(21-38) F			
(1-20) G			
Not environmentally friendly - higher CO ₂ emissions			
England & Wales	EU Directive 2002/91/EC		

