



**JAMES
ANDERSON**



TO LET

Ormonde Court, Putney, SW15

£1,800 Per Month

Per Month

A beautifully presented one bedroom apartment located on the ground floor within the highly desirable Ormonde Court just moments from all of Putney High Street's shops, bars, cafes and restaurants as well as Putney Mainline and other excellent transport links into the city.

The property comprises a large, bright reception / dining room, good sized double bedroom, modern kitchen and family bathroom. There is also direct access out to the beautifully maintained communal gardens.



One Double Bedroom



Modern Bathroom



Bright Reception Room



Modern Kitchen



EPC Rating C / Council Tax Band C / Holding Deposit £415.38



Putney Train Station



Putney High



Communal Gardens



Central Putney

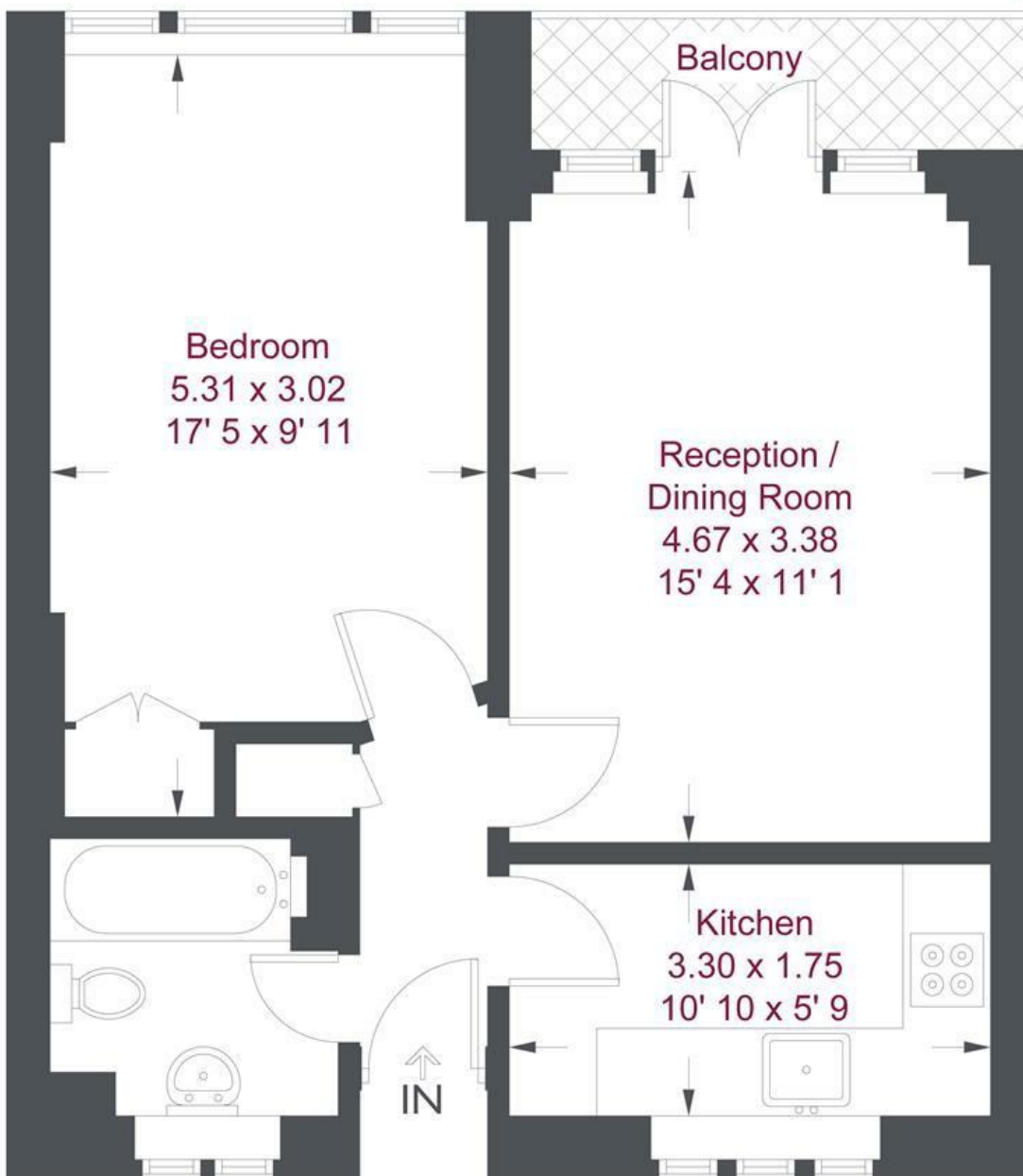


Minimum Term 12 Months / £2076.92



OPEN 7 DAYS A WEEK • Weekdays until 9pm • Weekends until 5pm

0208 785 4400



Ground Floor

Ormonde Court

Approximate Gross Internal Area = 480 sq ft / 44.6 sq m

This plan is not to scale and must be used as layout guidance only. All measurements and areas are approximate and should not be relied upon to provide accurate information. This plan must not be relied upon when making property valuations, design considerations or any other such relevant decisions. We accept no responsibility or liability (whether in contract, tort or otherwise) in relation to any loss whatsoever arising from or in connection with any use of this plan or the adequacy, accuracy or completeness of it or any information within it.

Energy Efficiency Rating		Current	Potential
<i>Very energy efficient - lower running costs</i>			
(92 plus) A			
(81-91) B			
(69-80) C			
(55-68) D			
(39-54) E			
(21-38) F			
(1-20) G			
<i>Not energy efficient - higher running costs</i>			
England & Wales	EU Directive 2002/91/EC	73	81

Environmental Impact (CO ₂) Rating		Current	Potential
<i>Very environmentally friendly - lower CO2 emissions</i>			
(92 plus) A			
(81-91) B			
(69-80) C			
(55-68) D			
(39-54) E			
(21-38) F			
(1-20) G			
<i>Not environmentally friendly - higher CO2 emissions</i>			
England & Wales	EU Directive 2002/91/EC	73	81

