



**JAMES
ANDERSON**



TO LET

£2,600 Per Month

Fanthorpe Street, Putney, SW15

Per Month

A period apartment set over three floors with large sunny rooms. The modern kitchen is well equipped and has plenty of storage; the modern bathroom is fully tiled and has a shower over the bath. All the bedrooms are spacious and the reception room is elegant. There is a period fire place, two sash windows and built in shelves/cupboards on either side of the chimney breast. It is conveniently located for local shops and restaurants and as easy access to Putney High Street, Barnes and access out of London via the A3. Viewing is highly recommended to fully appreciate this lovely home.



Three Double Bedrooms



Modern Bathroom



Large Bright Reception



Deposit £3000



EPC E / Council Tax Band E / Holding Deposit £600



Putney Train Station



Hotham Primary



Close to River Thames



West Putney



Unfurnished

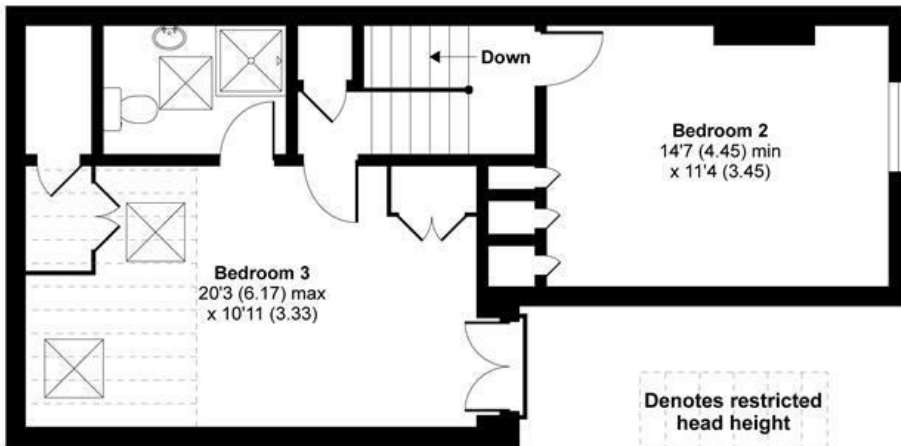


OPEN 7 DAYS A WEEK • Weekdays until 9pm • Weekends until 5pm

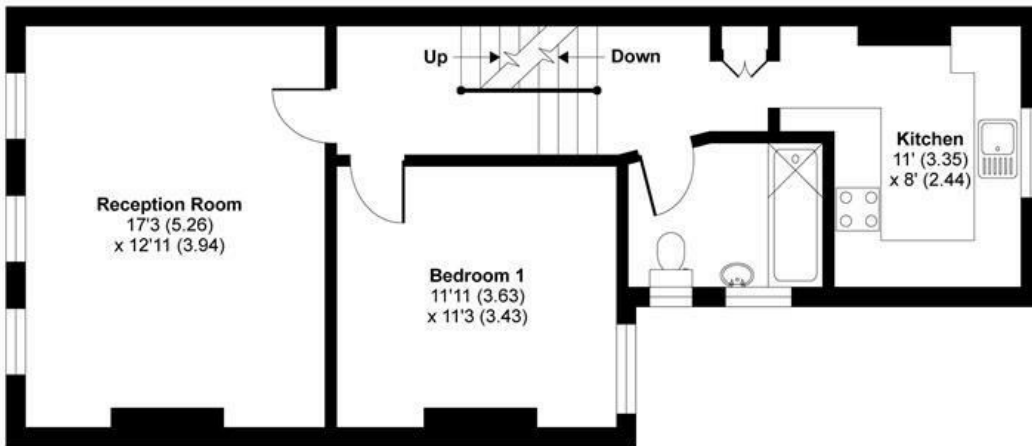
0208 785 4400

Fanthorpe Street, London, SW15

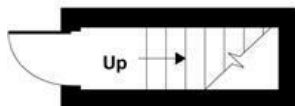
APPROX. GROSS INTERNAL FLOOR AREA 1099 SQ FT 102 SQ METRES (EXCLUDES RESTRICTED HEAD HEIGHT)



SECOND FLOOR



FIRST FLOOR



GROUND FLOOR

Whilst every attempt has been made to ensure the accuracy of the floor plan contained here, measurements of doors, windows and rooms are approximate and no responsibility is taken for any error, omission or misstatement. These plans are for representation purposes only as defined by RICS Code of Measuring Practice and should be used as such by any prospective purchaser. Specifically no guarantee is given on the total square footage of the property if quoted on this plan. Any figure given is for initial guidance only and should not be relied on as a basis of valuation.

Copyright nichecom.co.uk 2017 Produced for James Anderson REF : 414991

Energy Efficiency Rating		
	Current	Potential
<i>Very energy efficient - lower running costs</i>		
(92 plus) A		
(81-91) B		
(69-80) C		
(55-68) D		
(39-54) E		
(21-38) F		
(1-20) G		
<i>Not energy efficient - higher running costs</i>		
England & Wales	EU Directive 2002/91/EC	

Environmental Impact (CO ₂) Rating		
	Current	Potential
<i>Very environmentally friendly - lower CO2 emissions</i>		
(92 plus) A		
(81-91) B		
(69-80) C		
(55-68) D		
(39-54) E		
(21-38) F		
(1-20) G		
<i>Not environmentally friendly - higher CO2 emissions</i>		
England & Wales	EU Directive 2002/91/EC	

