



JAMES
ANDERSON

Putney Bridge Road
London SW18





**JAMES
ANDERSON**

Putney Bridge Road, London SW18

New to the market, a first floor two bedroom, two bathroom purpose built flat located on Putney Bridge Road opposite Wandsworth Park.

Presented in excellent condition and measuring 691 Sq Ft this well presented flat would make an ideal first time purpose or buy to let investment opportunity. The accommodation comprises an open plan kitchen living room with space to dine, family bathroom, two double bedrooms, the main bedroom features an en-suite shower room and fitted wardrobes.

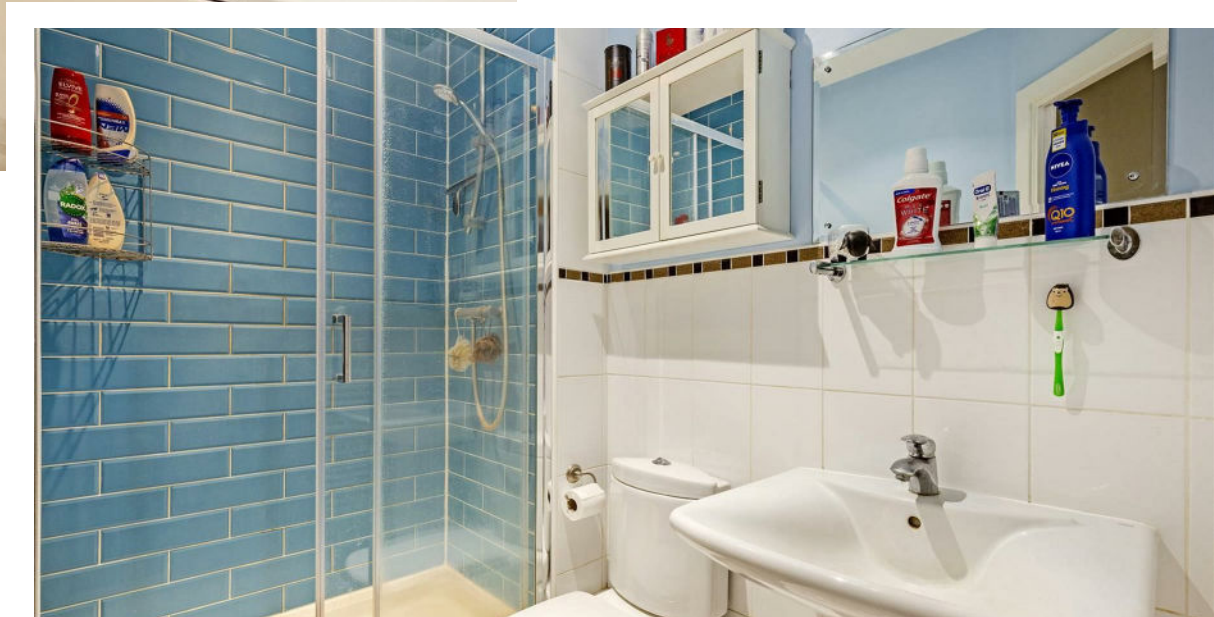
Additional benefits are underground designated parking, well kept communal gardens for residents and no onward chain. The property is a short distance from the shops, restaurants and transport facilities of Putney High Street. East Putney underground station is a short walk away, and both Putney and Wandsworth Town mainline stations, with direct access into Waterloo, are close by. Additionally, Clapham Junction is a short bus ride away. The A3 is approached via West Hill, and Wandsworth Park with its open spaces is opposite the property.

- Two Bedrooms
- Two Bathrooms
- Underground Designated Parking
- Communal Gardens
- No Onward Chain





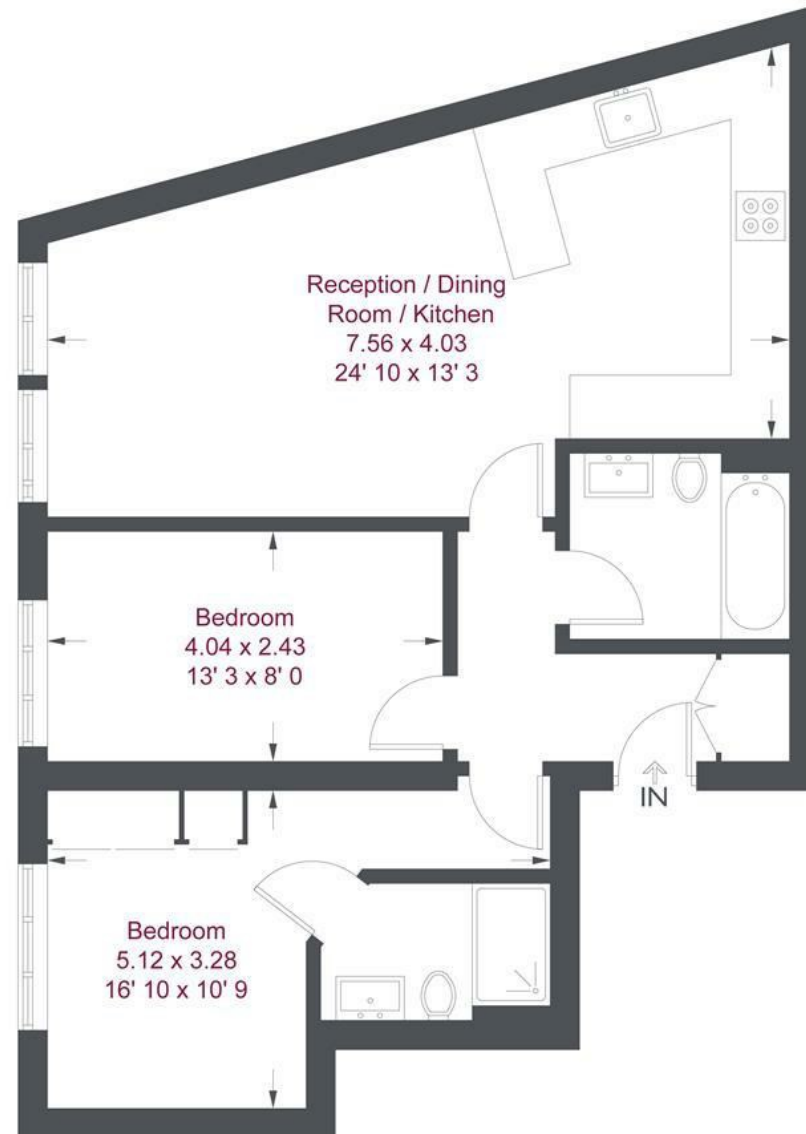












First Floor

Putney Bridge Road

Approximate Gross Internal Area = 691 sq ft / 64.2 sq m

This plan is not to scale and must be used as layout guidance only. All measurements and areas are approximate and should not be relied upon to provide accurate information. This plan must not be relied upon when making property valuations, design considerations or any other such relevant decisions. We accept no responsibility or liability (whether in contract, tort or otherwise) in relation to any loss whatsoever arising from or in connection with any use of this plan or the adequacy, accuracy or completeness of it or any information within it.



**JAMES
ANDERSON**

78 Lower Richmond Road
Putney
SW15 1LL

020 8788 6611
sales@japutney.co.uk
www.jamesanderson.co.uk

