



**JAMES
ANDERSON**



TO LET

21-23 Chartfield Avenue, Putney, SW15

£2,295 Per Month

Per Month

At 950sqft this lovely two double bedroom flat is perfect for professional couple who need space to work from home. The property benefits from high ceiling throughout and comprises a large reception . dining room with plenty of natural light. There are two double bedrooms, two bathrooms and a modern kitchen. The property also benefits from a large, well maintained communal garden and off street parking (on a first come first served basis). Fernhill Place is a stunning building located close to Central Putney, Putney Train Station and East Putney Tube.

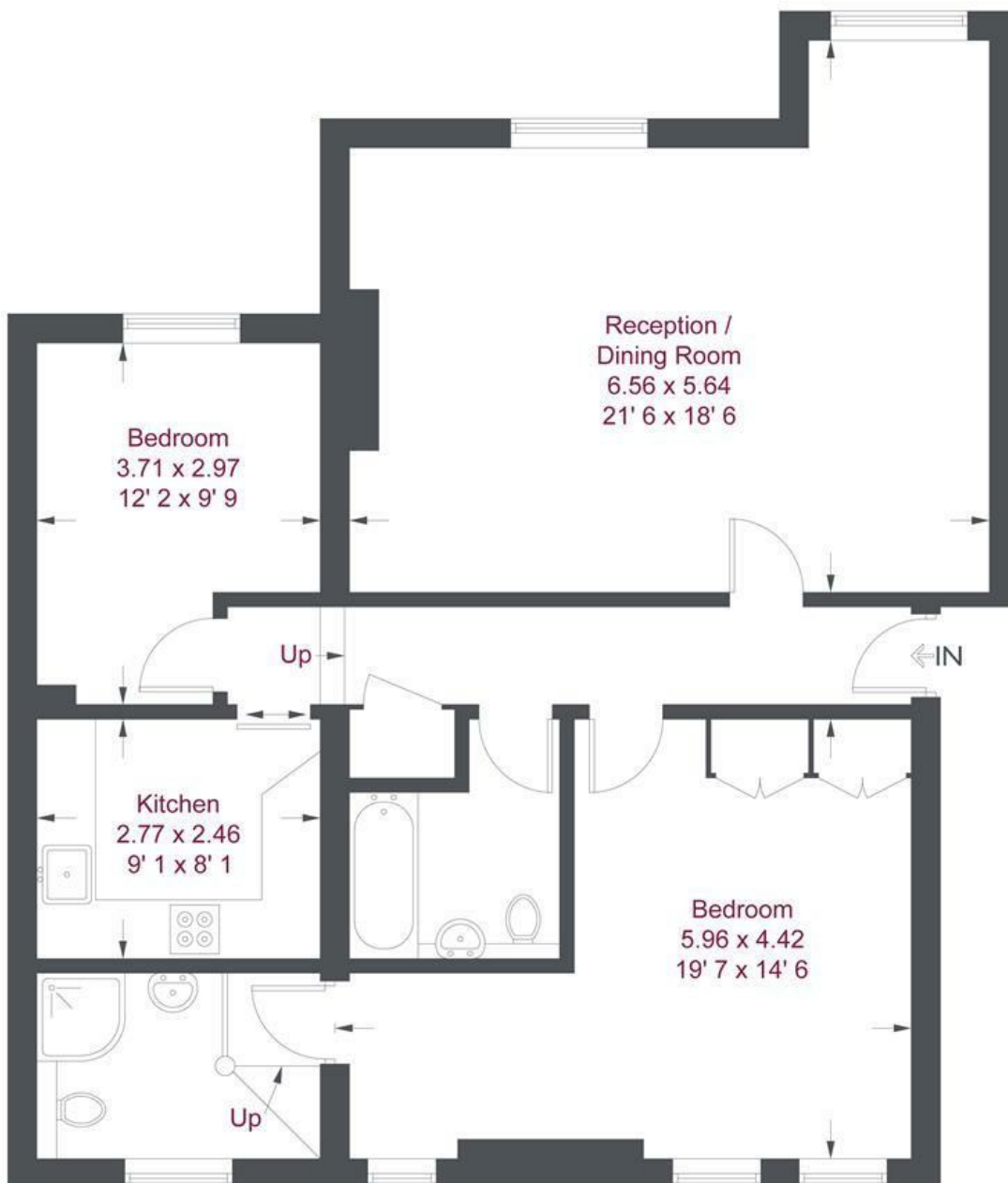
Deposit Required £2648
Minimum Term: 12 months
Holding Deposit: £429.60

-  Two Double Bedrooms
-  Two Bathrooms
-  Large Reception / Dining Room
-  Modern Kitchen
-  EPC Rating - D
-  Putney Train Station
-  Putney High
-  Large Communal Garden
-  Off Street Parking
-  Council Tax Band D - £1066 per annum



OPEN 7 DAYS A WEEK • Weekdays until 9pm • Weekends until 5pm

0208 785 4400



First Floor

Fernhill Place

Approximate Gross Internal Area = 990 sq ft / 92 sq m

This plan is not to scale and must be used as layout guidance only. All measurements and areas are approximate and should not be relied upon to provide accurate information. This plan must not be relied upon when making property valuations, design considerations or any other such relevant decisions. We accept no responsibility or liability (whether in contract, tort or otherwise) in relation to any loss whatsoever arising from or in connection with any use of this plan or the adequacy, accuracy or completeness of it or any information within it.

Energy Efficiency Rating		
	Current	Potential
<i>Very energy efficient - lower running costs</i>		
(92 plus) A		
(81-91) B		
(69-80) C	68	77
(55-68) D		
(39-54) E		
(21-38) F		
(1-20) G		
<i>Not energy efficient - higher running costs</i>		
England & Wales	EU Directive 2002/91/EC	

Environmental Impact (CO ₂) Rating		
	Current	Potential
<i>Very environmentally friendly - lower CO₂ emissions</i>		
(92 plus) A		
(81-91) B		
(69-80) C	68	77
(55-68) D		
(39-54) E		
(21-38) F		
(1-20) G		
<i>Not environmentally friendly - higher CO₂ emissions</i>		
England & Wales	EU Directive 2002/91/EC	

