



**JAMES
ANDERSON**



TO LET

White Hart Lane, Barnes, SW13

£1,650 Per Month

Per Month

A lovely two double bedroom apartment located on the popular White Hart Lane in Barnes. This spacious property comprises of a large and bright living room, a kitchen with breakfast bar which leads out onto a private balcony, bathroom with bath and shower, and two good sized bedrooms with built-in wardrobes. There is ample storage space and plenty of natural sunlight throughout the property. White Hart Lane houses a range of cafes, restaurants and boutiques and Barnes Bridge Station is just a short walk away. Further benefits include a large private storage cupboard in the communal area, perfect for push bikes and prams.

Deposit Required: £1846.15

Minimum Term: 12 months

Holding Deposit: £369.23



Two Double Bedrooms



Fully Tiled Bathroom



Spacious Reception Room



Well Fitted Kitchen



EPC Rating C



Barnes Station



East Sheen Primary



Close to Barnes Village



Balcony

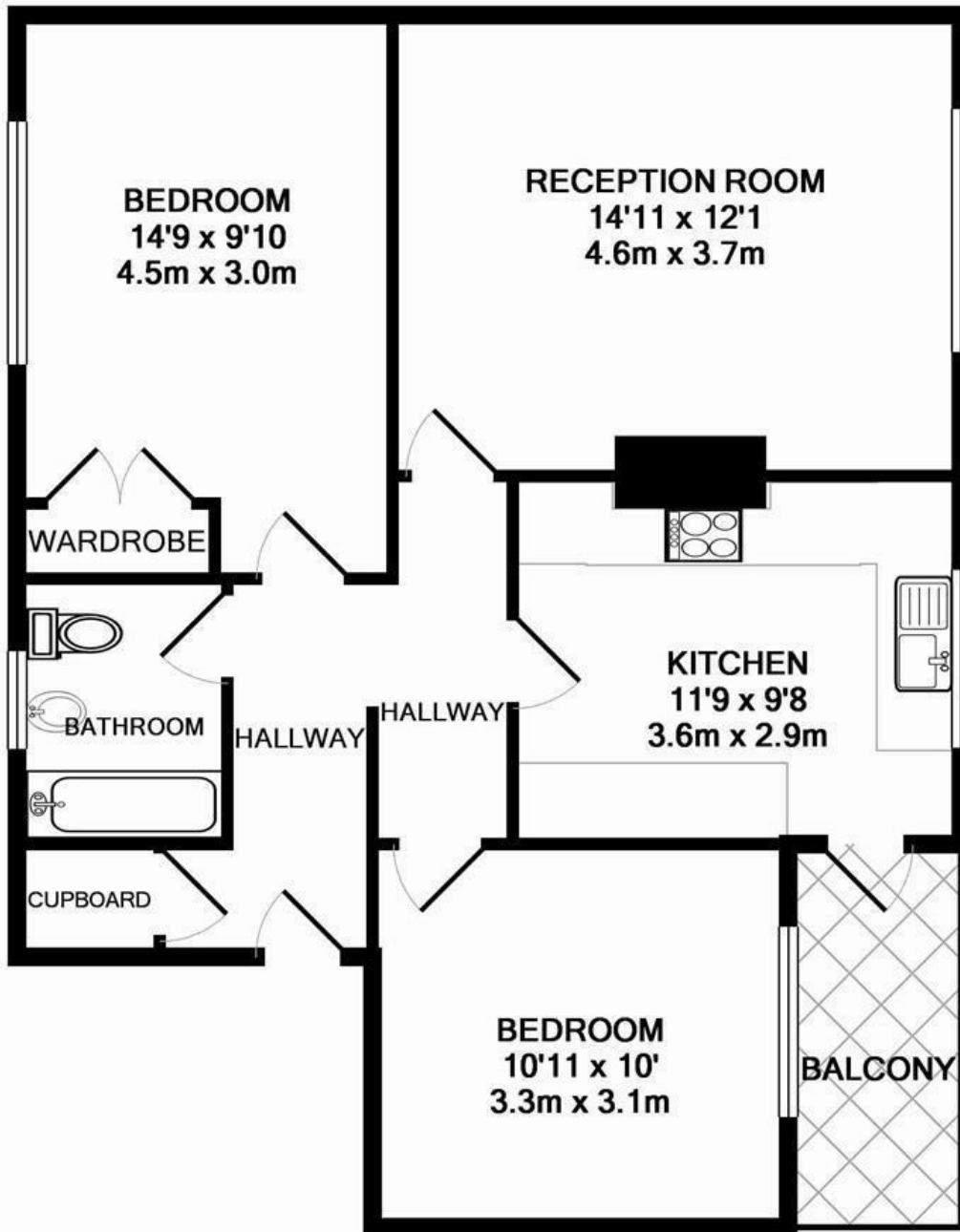


Council Tax Band D (£2,022)



OPEN 7 DAYS A WEEK • Weekdays until 9pm • Weekends until 5pm

0208 878 8688



WHITE HART LANE
TOTAL APPROX. FLOOR AREA 61.9 SQ.M. (667 SQ.FT.)
Made with Metropix ©2008

| Energy Efficiency Rating | | Current | Potential |
|---|-------------------------|-----------|-----------|
| Very energy efficient - lower running costs | | | |
| (92 plus) A | | | |
| (81-91) B | | | |
| (69-80) C | | | |
| (55-68) D | | | |
| (39-54) E | | | |
| (21-38) F | | | |
| (1-20) G | | | |
| Not energy efficient - higher running costs | | | |
| | | 70 | 80 |
| England & Wales | EU Directive 2002/91/EC | | |

| Environmental Impact (CO ₂) Rating | | Current | Potential |
|---|-------------------------|---------|-----------|
| Very environmentally friendly - lower CO ₂ emissions | | | |
| (92 plus) A | | | |
| (81-91) B | | | |
| (69-80) C | | | |
| (55-68) D | | | |
| (39-54) E | | | |
| (21-38) F | | | |
| (1-20) G | | | |
| Not environmentally friendly - higher CO ₂ emissions | | | |
| | | | |
| England & Wales | EU Directive 2002/91/EC | | |

