



**JAMES
ANDERSON**



TO LET

£1,500 Per Month

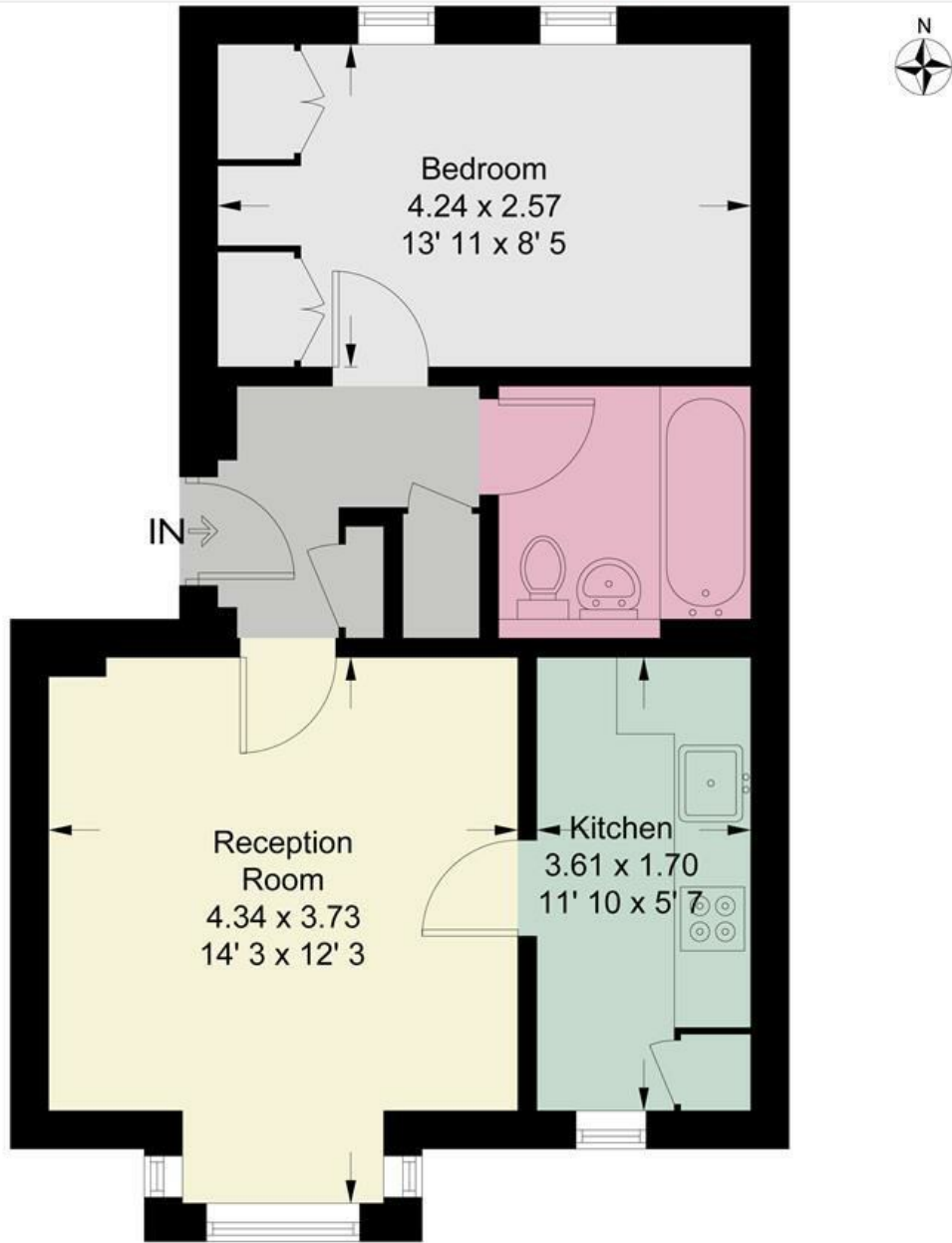
Dovecote Gardens, Mortlake, SW14

Per Month

A spacious one bedroom first floor apartment located within a desirable development. The property offers one double bedroom with built in wardrobes, a spacious reception room, modern fitted kitchen and bathroom. The property benefits further from allocated off street parking and bike storage. Dovecote Gardens is situated on a residential street and is within very easy reach of Mortlake Station (26 minutes to Waterloo), the River Thames, Richmond Park and the local shopping and amenities of East Sheen and Barnes Village. The 209 and 419 bus routes to Hammersmith Bridge and Richmond are very close by and provide a good service to Hammersmith Tube station and Richmond Town Centre.

-  One Double Bedroom
-  Mortlake Station
-  Fitted Bathroom
-  Outstanding Local Schools
-  Bright Reception
-  River Thames
-  Modern Kitchen
-  Bike Storage
-  EPC Rating C | Council Tax D | Holding Deposit £346
-  Deposit £1730.76 | Minimum Term 12 Months





First Floor

This plan is not to scale and must be used as layout guidance only. All measurements and areas are approximate and should not be relied upon to provide accurate information. This plan must not be relied upon when making property valuations, design considerations or any other such relevant decisions. We accept no responsibility or liability (whether in contract, tort or otherwise) in relation to any loss whatsoever arising from or in connection with any use of this plan or the adequacy, accuracy or completeness of it or any information within it.



Energy Efficiency Rating		Current	Potential
Very energy efficient - lower running costs			
(92 plus) A			
(81-91) B			
(69-80) C			
(55-68) D			
(39-54) E			
(21-38) F			
(1-20) G			
Not energy efficient - higher running costs			
England & Wales	EU Directive 2002/91/EC	75	79

Environmental Impact (CO ₂) Rating		Current	Potential
Very environmentally friendly - lower CO ₂ emissions			
(92 plus) A			
(81-91) B			
(69-80) C			
(55-68) D			
(39-54) E			
(21-38) F			
(1-20) G			
Not environmentally friendly - higher CO ₂ emissions			
England & Wales	EU Directive 2002/91/EC	78	83

