



**JAMES
ANDERSON**



TO LET

Lonsdale Road, SW13

£1,750 PCM

PCM

This fantastic two bedroom apartment is located on the first floor of a converted Victorian House on Lonsdale Road. The property has been re-carpeted and repainted throughout to a very high standard. The property offers two double bedrooms, bright south facing living room and fully fitted kitchen and bathroom.

The property also benefits from a lawned communal garden.

Lonsdale Road is perfectly positioned for local amenities, schools and Hammersmith Bridge and the tube station being a short walk away.



Two Double Bedrooms



Fitted Bathroom



Bright Reception Room



Galley Kitchen



EPC Rating D



Barnes Bridge Station



St Pauls School



Great Transport Links



Communal Garden



Recently Refurbished

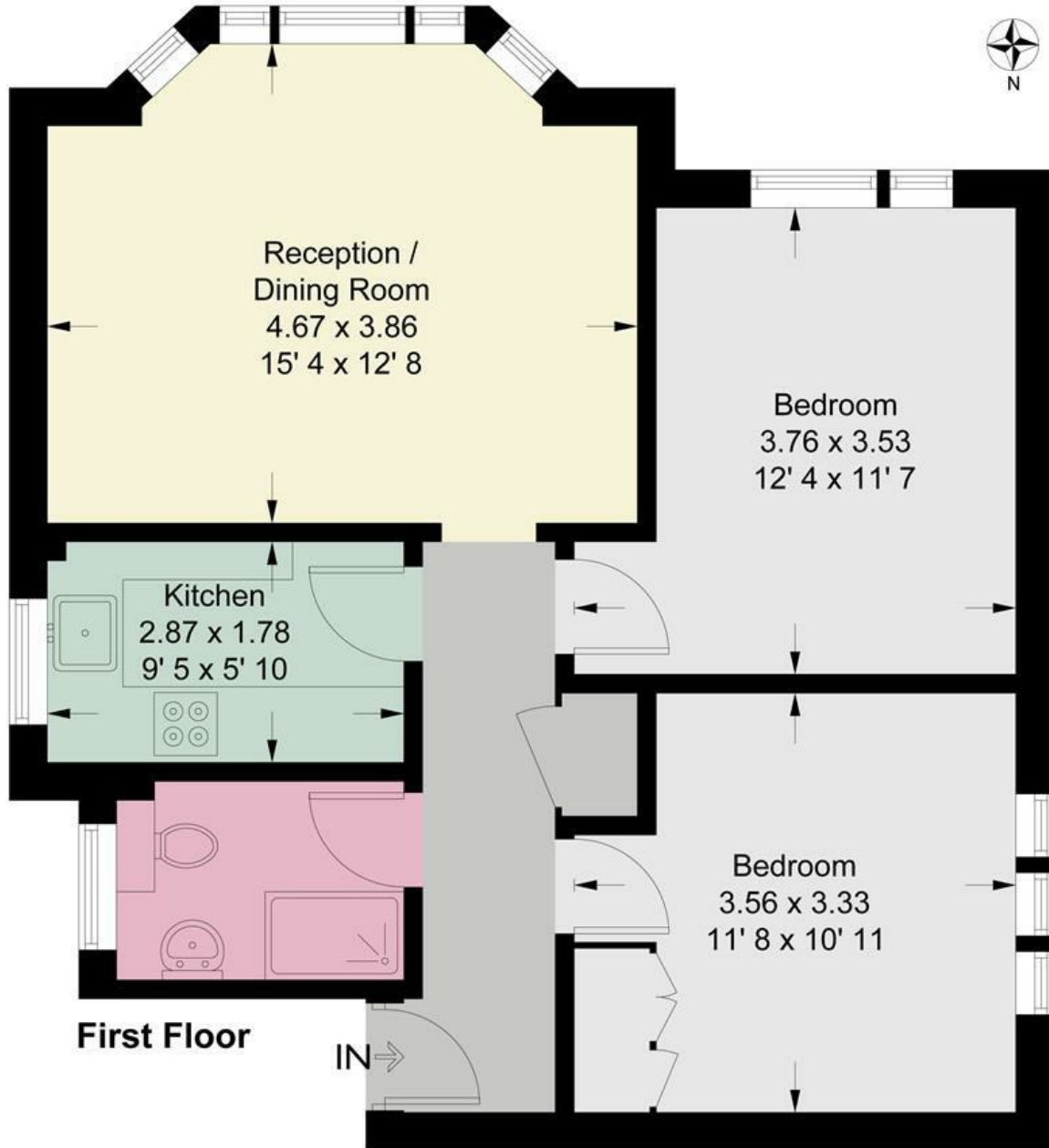


OPEN 7 DAYS A WEEK • Weekdays until 9pm • Weekends until 5pm

0208 878 8688

Brook House

Approximate Gross Internal Area = 623 sq ft / 57.9 sq m



This plan is not to scale and must be used as layout guidance only. All measurements and areas are approximate and should not be relied upon to provide accurate information. This plan must not be relied upon when making property valuations, design considerations or any other such relevant decisions. We accept no responsibility or liability (whether in contract, tort or otherwise) in relation to any loss whatsoever arising from or in connection with any use of this plan or the adequacy, accuracy or completeness of it or any information within it.



Energy Efficiency Rating		Current	Potential
Very energy efficient - lower running costs			
(92 plus) A			82
(81-91) B			
(69-80) C			
(55-68) D			
(39-54) E		61	
(21-38) F			
(1-20) G			
Not energy efficient - higher running costs			
England & Wales		EU Directive 2002/91/EC	

Environmental Impact (CO ₂) Rating		Current	Potential
Very environmentally friendly - lower CO ₂ emissions			
(92 plus) A			
(81-91) B			
(69-80) C			
(55-68) D			
(39-54) E			
(21-38) F			
(1-20) G			
Not environmentally friendly - higher CO ₂ emissions			
England & Wales		EU Directive 2002/91/EC	

