



JAMES
ANDERSON



FOR SALE


£1,750,000

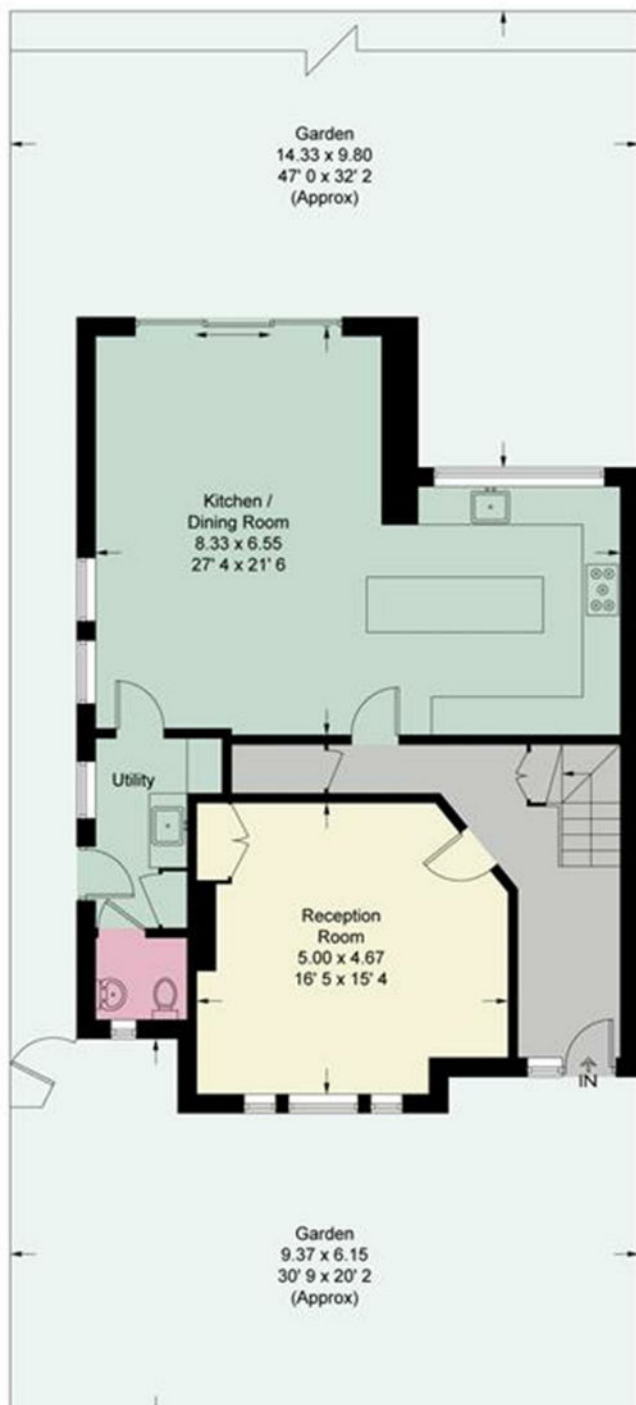
Burdeshott Avenue, TW10

An immaculate semi-detached family home situated on Burdeshott Avenue, a sought-after residential road on the borders of Richmond and East Sheen. This wonderful property offers excellent entertaining space on the ground floor whilst the upstairs has been beautifully designed to offer five bedrooms and three bathrooms. There is a wonderful west-facing private garden and off-street parking for multiple cars. Burdeshott Avenue is situated on the East Sheen/Richmond border, approximately 900 metres from the main Sheen shopping centre. Bus routes are immediately to hand on the Upper Richmond Road West, whilst Mortlake Railway station is approximately 1 km away. There are many excellent schools in the general vicinity including St. Paul's, Tower House and Istock Place and numerous first rate State Primary Schools. The area also boasts numerous leisure and sporting facilities including The Roehampton Club, a host of golf courses as well as the vast open spaces of Richmond Park.

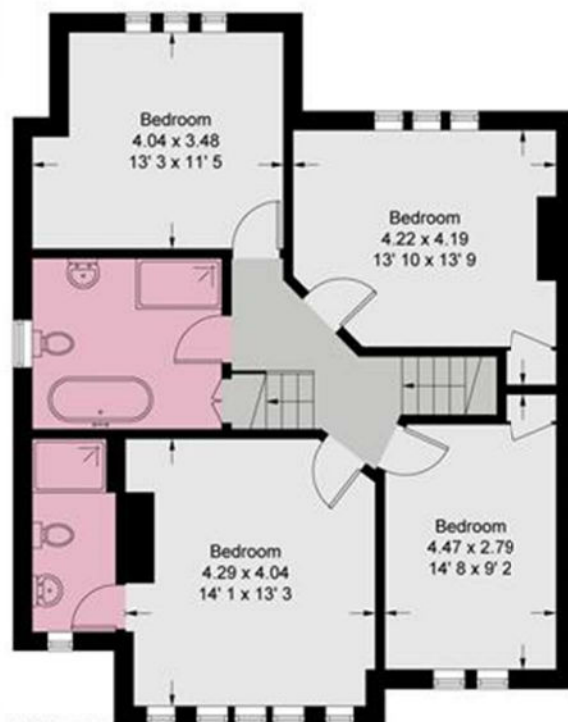




 = Reduced headroom below 1.5m / 5'0"



Second Floor
613 sq ft / 57 sq m
(Including Reduced Headroom / Eaves)



First Floor
857 sq ft / 79.6 sq m

