



**JAMES
ANDERSON**



TO LET

Palmerston Road, London, SW14

£4,250 Per Month

Per Month

Stunning four bedroom family home situated on the sought after Palmerston Road in Parkside East Sheen. This beautifully refurbished property offers a large eat-in kitchen with island, bi-folding doors out to the private garden, front reception room, three double bedrooms, fourth single bedroom, two modern bathrooms; one of which has a walk-in shower. Palmerston Road is located moments from Richmond Park, whilst being conveniently situated for all of the amenities of East Sheen including Waitrose, Mortlake station and several pubs/cafes/restaurants.



Four Bedrooms



Two Bathrooms



Unfurnished



Kitchen/Diner



EPC Rating - C



Mortlake Station



Sheen Mount Primary



Close to Richmond Park



Lovely Family Home



Private Garden



OPEN 7 DAYS A WEEK • Weekdays until 9pm • Weekends until 5pm

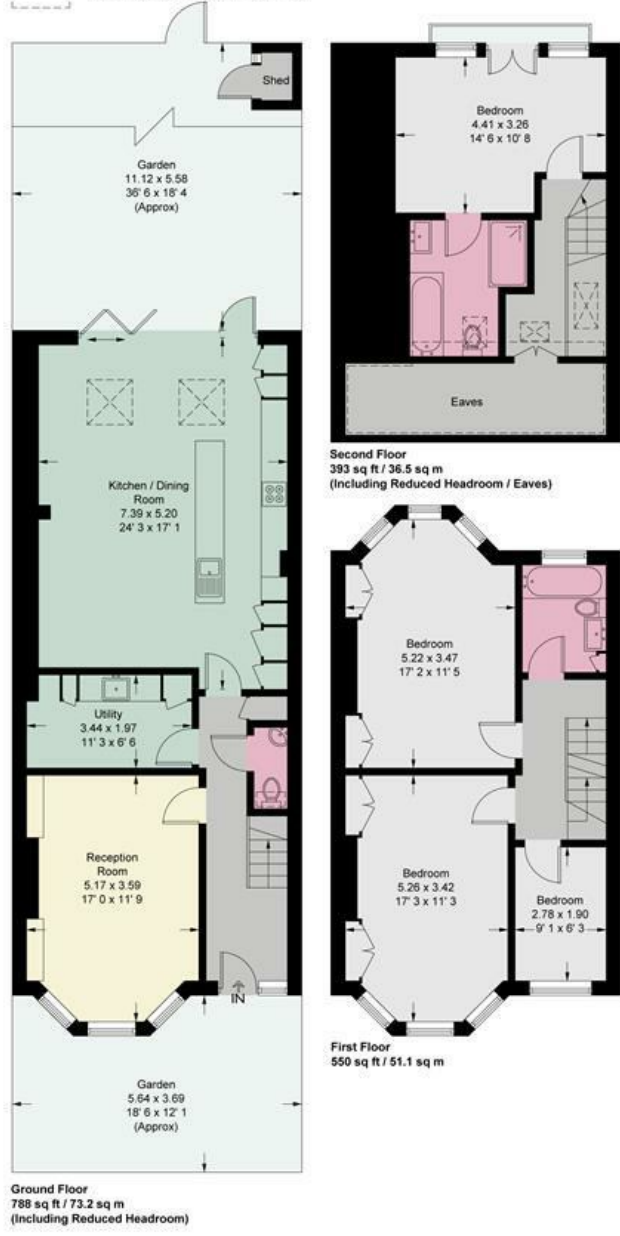
0208 876 6611

Palmerston Road

Approximate Gross Internal Area = 1627 sq ft / 151.1 sq m
 (Excluding Reduced Headroom / Eaves / Shed)
 Reduced Headroom / Eaves = 104 sq ft / 9.7 sq m
 Total = 1731 sq ft / 160.8 sq m



= Reduced headroom below 1.5m / 5'0"



This plan is not to scale and must be used as layout guidance only. All measurements and areas are approximate and should not be relied upon to provide accurate information. This plan must not be relied upon when making property valuations, design considerations or any other such relevant decisions. We accept no responsibility or liability (whether in contract, tort or otherwise) in relation to any loss whatsoever arising from or in connection with any use of this plan or the adequacy, accuracy or completeness of it or any information within it.



Energy Efficiency Rating		Current	Potential
Very energy efficient - lower running costs			
(92 plus) A			
(81-91) B			
(69-80) C			
(55-68) D			
(39-54) E			
(21-38) F			
(1-20) G			
Not energy efficient - higher running costs			
England & Wales	EU Directive 2002/91/EC	72	81

Environmental Impact (CO ₂) Rating		Current	Potential
Very environmentally friendly - lower CO ₂ emissions			
(92 plus) A			
(81-91) B			
(69-80) C			
(55-68) D			
(39-54) E			
(21-38) F			
(1-20) G			
Not environmentally friendly - higher CO ₂ emissions			
England & Wales	EU Directive 2002/91/EC		

