



JAMES  
ANDERSON



## TO LET


3 Alton Road, London, SW15






## £1,800 Per Month

Per Month

Measuring just over 750 sq ft, this beautifully presented two bedroom, two bathroom modern flat is located on Alton Road, Roehampton, within close proximity to Richmond Park, Putney Heath and Wimbledon Common. The property is newly repainted and comprises a lovely bright open plan kitchen / reception room, two double bedrooms (one with an ensuite bathroom) and a family bathroom. The property also benefits from off-street parking.

Alton Road runs off Roehampton Lane and is therefore a short walk from the wide open spaces of Putney Heath and Wimbledon Common. Also close at hand is Roehampton High Street and Waitrose local. There also numerous buses with swift access to Putney, Barnes and beyond.

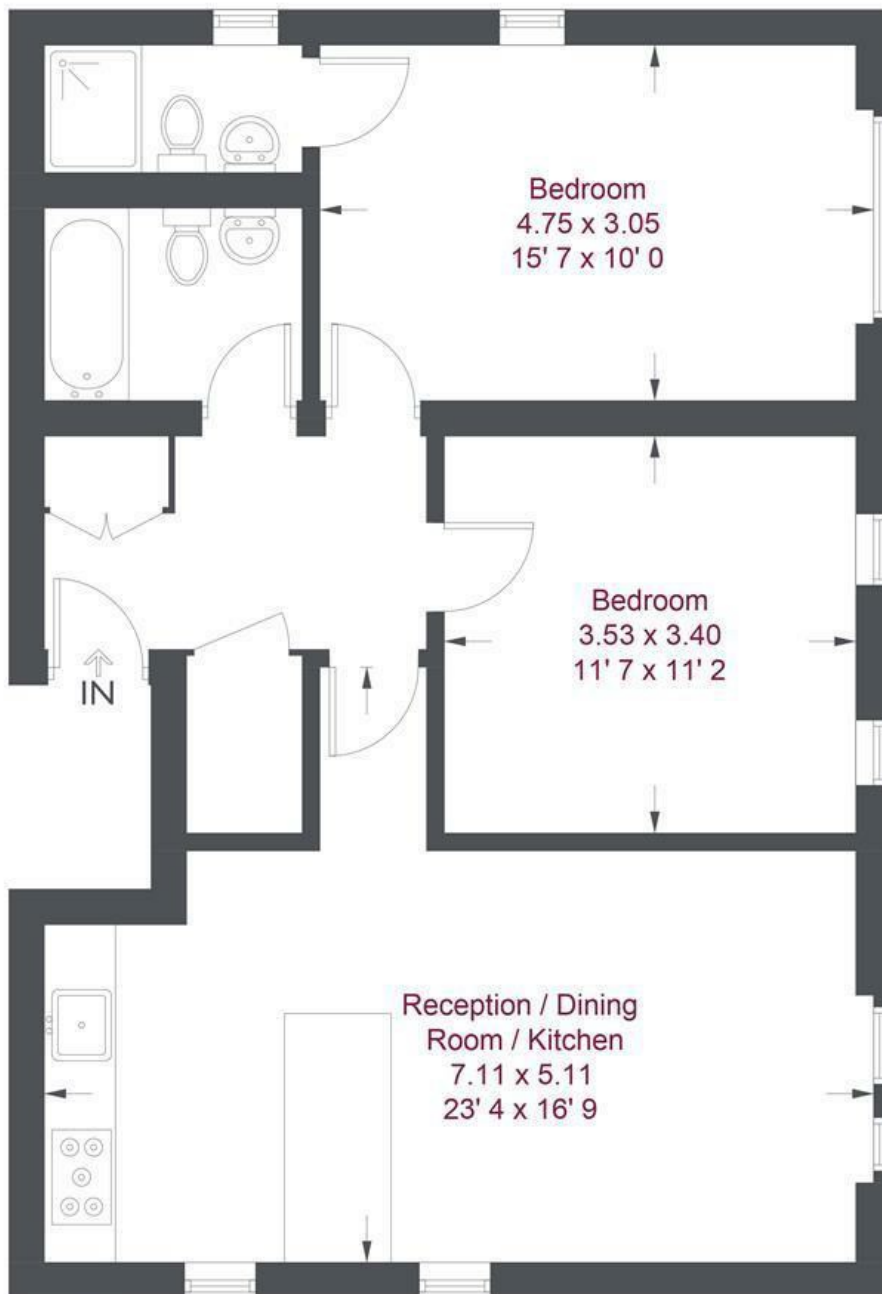
-  Two Double Bedrooms
-  Two Bathrooms
-  Open Plan Reception
-  Modern Kitchen
-  EPC Rating - B

-  Barnes Train Station
-  Roehampton University
-  Richmond Park
-  Off Street Parking
-  Newly Repainted



OPEN 7 DAYS A WEEK • Weekdays until 9pm • Weekends until 5pm

0208 785 4400



First Floor

### Alton Road

Approximate Gross Internal Area = 758 sq ft / 70.4 sq m

Not to scale, for guidance only and must not be relied upon as a statement of fact  
All measurements and areas are approximate only and have been prepared in accordance with the current edition of the RICS Code of Measuring Practice

Energy Efficiency Rating		
	Current	Potential
<i>Very energy efficient - lower running costs</i>		
(92 plus) <b>A</b>		
(81-91) <b>B</b>		
(69-80) <b>C</b>		
(55-68) <b>D</b>		
(39-54) <b>E</b>		
(21-38) <b>F</b>		
(1-20) <b>G</b>		
<i>Not energy efficient - higher running costs</i>		
<b>England &amp; Wales</b>	EU Directive 2002/91/EC	

Environmental Impact (CO <sub>2</sub> ) Rating		
	Current	Potential
<i>Very environmentally friendly - lower CO2 emissions</i>		
(92 plus) <b>A</b>		
(81-91) <b>B</b>		
(69-80) <b>C</b>		
(55-68) <b>D</b>		
(39-54) <b>E</b>		
(21-38) <b>F</b>		
(1-20) <b>G</b>		
<i>Not environmentally friendly - higher CO2 emissions</i>		
<b>England &amp; Wales</b>	EU Directive 2002/91/EC	

