



**JAMES
ANDERSON**

Westleigh Avenue
London SW15
Guide Price £925,000



Westleigh Avenue London SW15

Situated within a quiet residential development in the heart of Putney, this well-proportioned four bedroom mid-terrace townhouse offers flexible accommodation arranged over three floors, making it an ideal home for growing families or those needing additional space to work from home.

The property features four versatile bedrooms, two bathrooms, and bright, well-balanced living accommodation designed to suit modern family life. The spacious layout provides excellent flexibility, whether you're looking for additional reception space, a home office, or a fourth bedroom.

To the rear, the property benefits from a low-maintenance paved garden, perfect for outdoor dining and entertaining, while residents can also enjoy direct access to beautifully maintained communal gardens. Further benefits include an integral garage, which can be converted (STPP).

Balmoral Close is a popular residential cul-de-sac, ideally positioned close to Putney's excellent range of shops, cafés and restaurants, as well as superb transport links into Central London. The area is also well served by highly regarded schools and an abundance of green open spaces, including Putney Heath, Richmond Park and the River Thames, offering the perfect balance of convenience and outdoor living.

Offering generous accommodation across three floors, excellent outside space and a highly desirable location, this is a fantastic opportunity to acquire a spacious family home in one of Putney's most sought-after neighbourhoods.











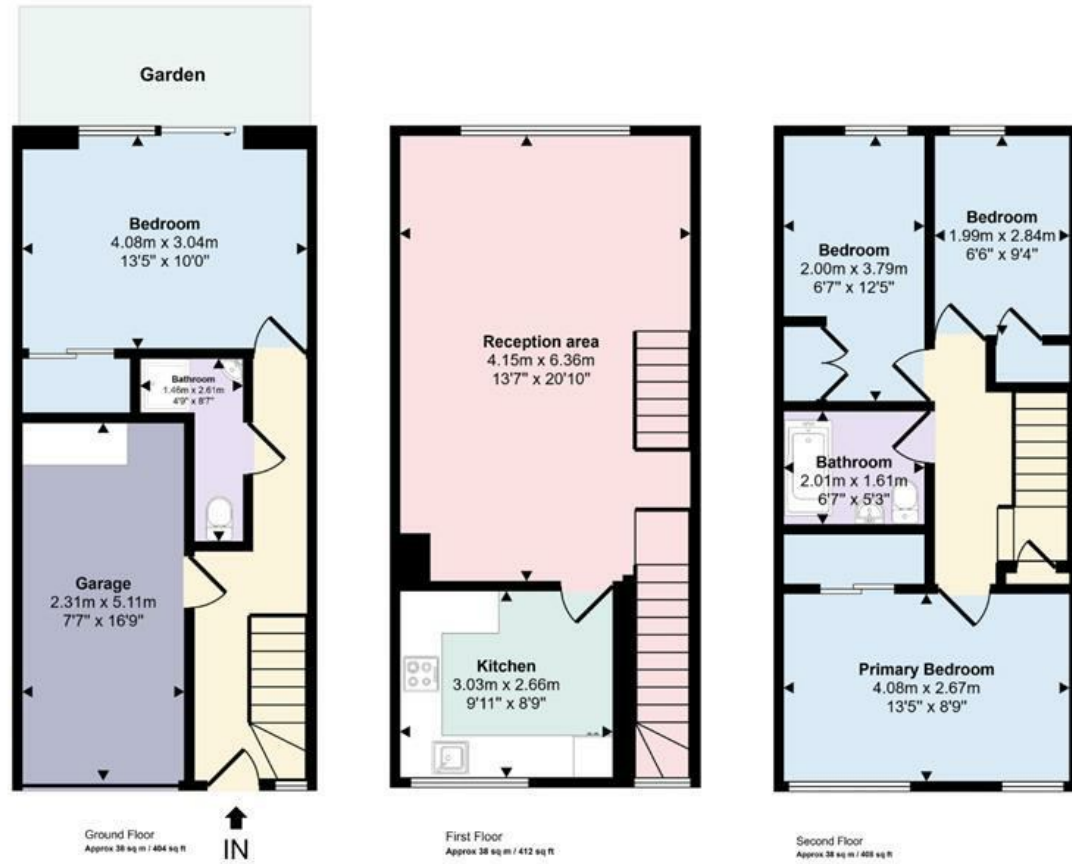






Balmoral Close, Putney, SW15

Approx Gross Internal Area
114 sq m / 1224 sq ft





151 Upper Richmond Road
Putney
London
SW15 2TX

0208 785 4400
sales@japutney.co.uk

