



JAMES
ANDERSON

Dover House Road
London SW15
Guide Price £450,000



Dover House Road London SW15

Located on the highly sought after Dover House Road, this beautifully refurbished ground floor maisonette offers over 500 sqft of stylish and well proportioned living space, complemented by a stunning private garden.

The property has been thoughtfully modernised by the current owners to create a bright, contemporary home that is ready to move straight into. At the heart of the home is an impressive kitchen, finished to a high standard and featuring a premium Quooker tap, sleek cabinetry and generous worktop space. Attractive herringbone flooring adds character and elegance, enhancing the overall sense of quality throughout.

The accommodation is bright and airy, with excellent proportions and an abundance of natural light creating a welcoming atmosphere. The reception room provides a comfortable space for both relaxing and entertaining, while the practical layout maximises every square foot. A useful utility area positioned just off the kitchen offers additional storage and laundry space, helping to keep the main living areas organised and clutter-free.

The bedroom is generously sized and served by a well appointed bathroom, making this an ideal home for first time buyers, professionals, downsizers or investors alike.

A standout feature is the beautifully designed private garden. Stylish and secluded, it has been carefully landscaped to provide a wonderful outdoor retreat. Painted fencing, festoon lighting and a dedicated seating area create the perfect setting for entertaining friends, enjoying summer evenings or simply unwinding in a peaceful environment. The garden acts as a natural extension of the living space and offers a rare sense of privacy.

Dover House Road is a popular residential location, well placed for local amenities, green spaces and excellent transport links. Combining a high quality finish, generous living accommodation and an exceptional private garden, this superb maisonette presents a fantastic opportunity to acquire a turnkey home.











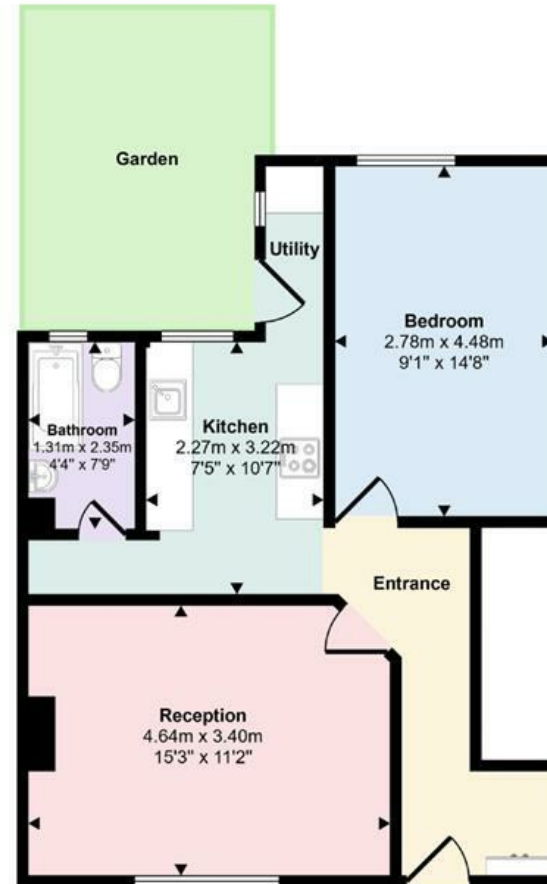






Dover House Road

Approx Gross Internal Area
50 sq m / 541 sq ft





78 Lower Richmond Road
Putney
SW15 1LL

020 8788 6611
sales@japutney.co.uk
www.jamesanderson.co.uk

