



JAMES
ANDERSON

Tudor Gardens
London SW13
£5,500



Tudor Gardens London SW13

Nestled within a quiet and highly sought-after residential cul-de-sac, this well-presented four-bedroom family home offers spacious and versatile accommodation, perfectly suited to modern family living.

The property comprises four well-proportioned bedrooms, a bright and spacious reception room, a fitted kitchen and a family bathroom, all arranged to provide a practical and comfortable layout. The home benefits from an abundance of natural light throughout.

Ideally positioned within easy reach of Barnes Village, the River Thames and an excellent selection of local shops, cafés and restaurants, the property also enjoys convenient access to a number of highly regarded schools and excellent transport links into Central London.

Offering a wonderful balance of space, location and potential, this is a fantastic opportunity to acquire a family home in one of South West London's most desirable neighbourhoods.



















JAMES
ANDERSON

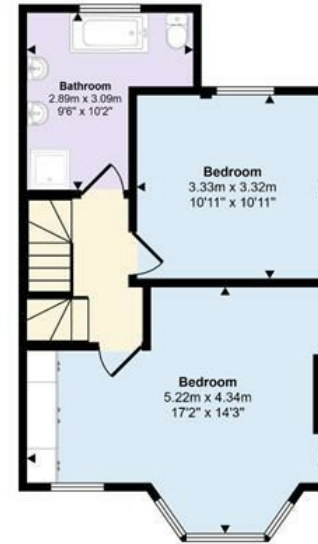
Tudor Gardens, Barnes, SW13

Approx Gross Internal Area
131 sq m / 1415 sq ft

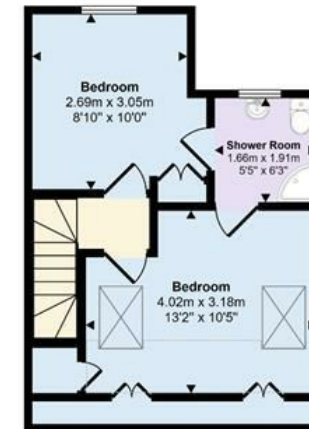


Ground Floor
Approx 58 sq m / 622 sq ft

☐ Denotes head height below 1.5m



First Floor
Approx 42 sq m / 449 sq ft



Second Floor
Approx 32 sq m / 345 sq ft



65 Barnes High Street
Barnes
SW13 9LD

0208 878 8688

barnes2@jamesanderson.co.uk

www.jamesanderson.co.uk