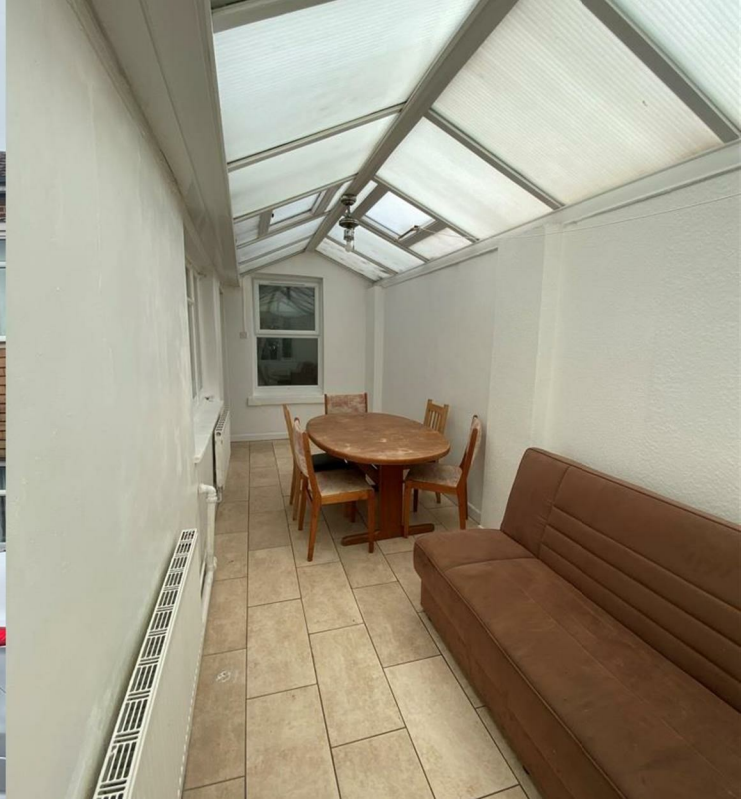




**JAMES
ANDERSON**



TO LET

Padwell Road, Southampton, SO14

£3,000 Per Month

Per Month

Lovely terraced house on Padwell Road, with a private garden. Available for a company let and spanning an impressive 1,066 square feet, the property boasts two spacious reception rooms, four well-proportioned bedrooms providing ample space for families, or sharers.

Situated in a lively neighbourhood, residents will enjoy easy access to local amenities, schools, Southampton University and transport links. This property presents a wonderful opportunity for those looking to settle in a welcoming community while enjoying the comforts of a well-appointed home.



Four Bedrooms



One Bathroom



One Reception



Spacious Kitchen with Conservatory



EPC D | Council Tax C



St Denys & Southampton Central Station Nearby



Bevois Town Primary School



Close to City Centre



Close to the University of Southampton



Holding Deposit £ | Deposit £



OPEN 7 DAYS A WEEK • Weekdays until 9pm • Weekends until 5pm

0208 876 6611

