



**JAMES
ANDERSON**



FOR SALE

£900,000

South Worple Way, London, SW14

A well-presented three-bedroom house with off street parking and a south facing garden located within easy reach of Mortlake Station & Thomson House School.

This superb house offers accommodation arranged over three floors and includes three generous double bedrooms, all with fitted wardrobes, along with two well-appointed bathrooms, a spacious reception room featuring French doors that open seamlessly onto a private south-facing garden, and a separate fully equipped kitchen. Further enhancing its appeal, the house includes off-street parking for two cars, shed for further storage and useful side access.

South Worple Way combines convenience with a strong sense of community, situated within walking distance of Mortlake railway station and offering excellent transport links via local bus routes and the A3. The area is particularly popular with families, thanks to its proximity to highly regarded schools and easy access to leading independent schools in Richmond and Barnes.

For outdoor enthusiasts, nearby green spaces include Palewell Common, Sheen Common, the Thames Path, and Richmond Park. Meanwhile, the vibrant amenities of Sheen Lane and East Sheen High Street ensure everyday living is both convenient and enjoyable.



Three Bedrooms



Two Bathrooms



23ft South Facing Reception Room



Separate Fully Equipped Kitchen



Freehold | EPC D | Council Tax Band G



Just 0.2 Miles TAO Mortlake Station



Walking Distance To OUTSTANDING Local Primary Schools



Popular 'Royals' Area Of East Sheen



South Facing Garden



Off Street Parking For Two Cars

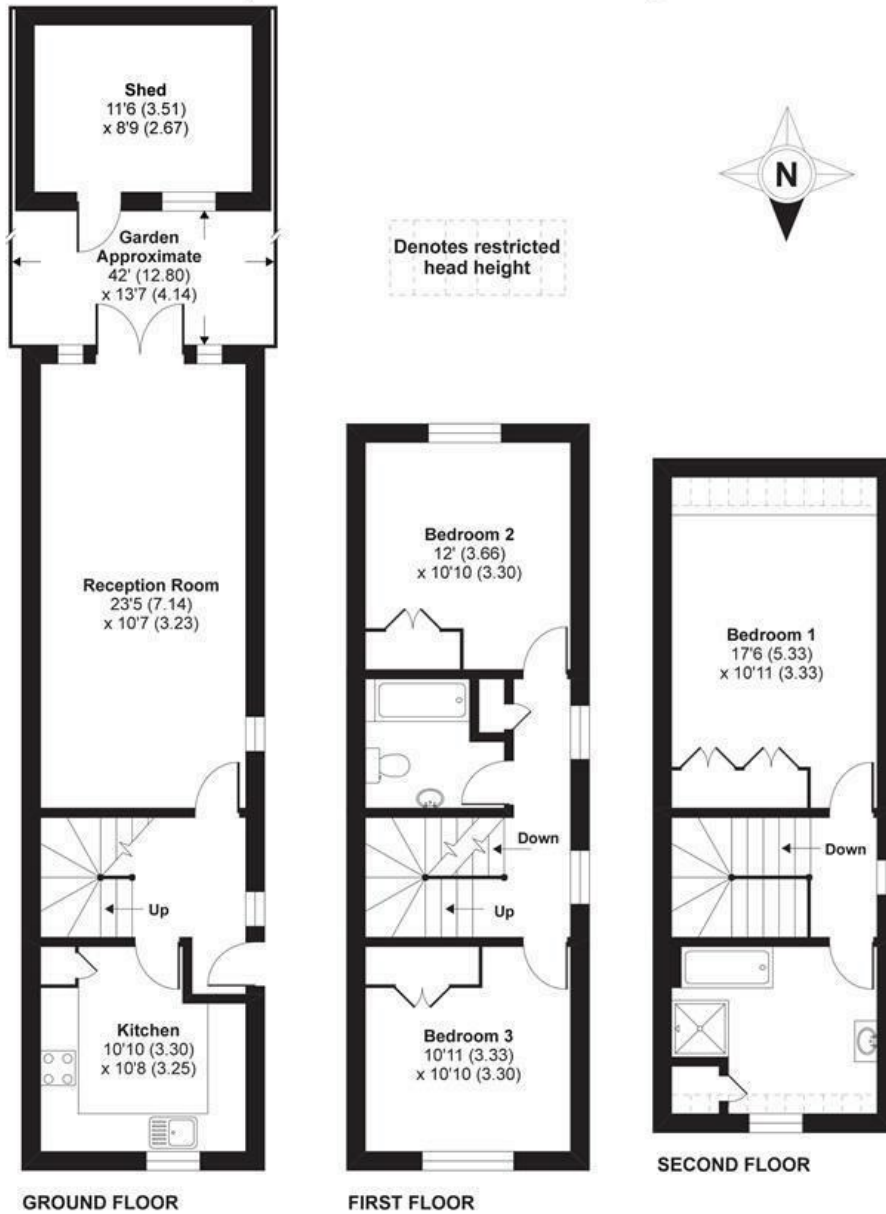


OPEN 7 DAYS A WEEK • Weekdays until 9pm • Weekends until 5pm

020 8876 6611

South Worple Way, East Sheen, SW14

APPROX. GROSS INTERNAL FLOOR AREA 1195 SQ FT 111 SQ METRES
(EXCLUDES RESTRICTED HEAD HEIGHT & SHED)



Whilst every attempt has been made to ensure the accuracy of the floor plan contained here, measurements of doors, windows and rooms are approximate and no responsibility is taken for any error, omission or misstatement. These plans are for representation purposes only as defined by RICS Code of Measuring Practice and should be used as such by any prospective purchaser. Specifically no guarantee is given on the total square footage of the property if quoted on this plan. Any figure given is for initial guidance only and should not be relied on as a basis of valuation.

Copyright nichecom.co.uk 2019 Produced for James Anderson REF : 525813

