



JAMES  
ANDERSON



## TO LET






Malthouse Passage, Barnes, SW13

**£2,175 Per Month**

Per Month

Beautifully presented and characterful Victorian terraced cottage located in Barnes Village. The accommodation comprises spacious open plan reception room, attractive kitchen with a range of hand crafted units, master bedroom with ensuite bathroom, two further bedrooms and a shower room. The property further benefits from a landscaped south facing garden with patio leading to lawn.

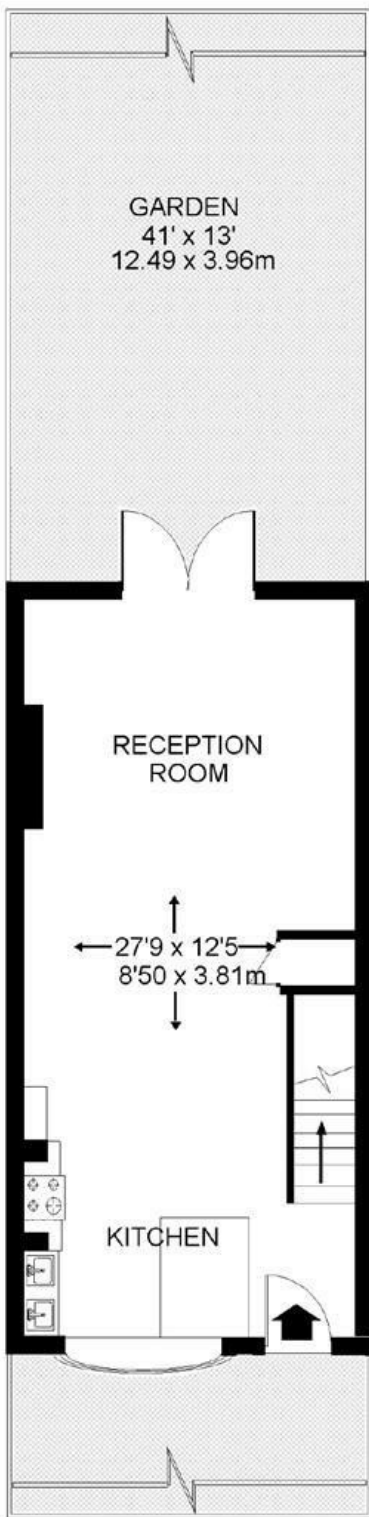
-  Victorian Cottage
-  Central Barnes Location
-  Spacious Reception Room
-  Kitchen
-  Three Bedrooms

-  Ensuite Bathroom
-  Shower Room
-  Landscaped Garden
- 
- 

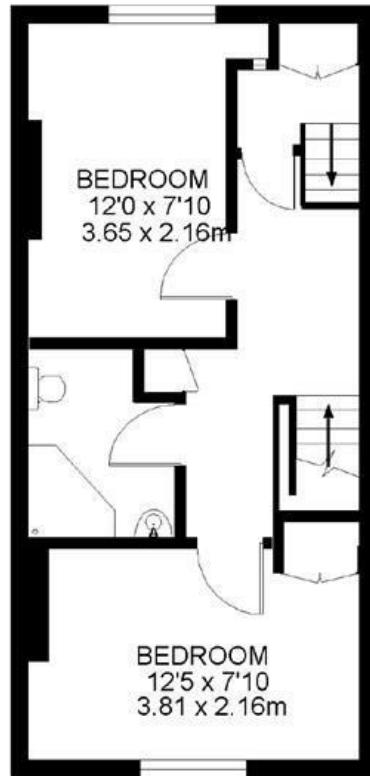


OPEN 7 DAYS A WEEK • Weekdays until 9pm • Weekends until 5pm

0208 878 8688



GROUND FLOOR



FIRST FLOOR



SECOND FLOOR

Energy Efficiency Rating		Current	Potential
Very energy efficient - lower running costs			
(92 plus) A			88
(81-91) B			
(69-80) C			
(55-68) D			
(39-54) E		62	
(21-38) F			
(1-20) G			
Not energy efficient - higher running costs			
<b>England &amp; Wales</b>		EU Directive 2002/91/EC	

Environmental Impact (CO <sub>2</sub> ) Rating		Current	Potential
Very environmentally friendly - lower CO <sub>2</sub> emissions			
(92 plus) A			
(81-91) B			
(69-80) C			
(55-68) D			
(39-54) E			
(21-38) F			
(1-20) G			
Not environmentally friendly - higher CO <sub>2</sub> emissions			
<b>England &amp; Wales</b>		EU Directive 2002/91/EC	

