



**JAMES
ANDERSON**



TO LET

Sloane Gardens, London, SW1W






£5,600 Per Month

Per Month

This SHORT LET is located in the heart of Knightsbridge, moments from the international designer boutiques of Sloane Square as well as the charming shops of Beauchamp Place. This prime location is also close to Harvey Nichols and the iconic Harrods Department Store. It is only a short walk from the open green spaces of Hyde Park as well as Cultural attractions such as the V&A and the Science Museum.

The Apartment benefits from a bright reception room with two large double bedrooms and a fully fitted kitchen. The modern bathroom has a bath and separate walk in shower and there is a third room currently being used as a dining room / office.

-  Two Double Bedrooms
-  Modern Bathroom
-  Spacious Sitting Room
-  Modern Kitchen
-  EPC E / Deposit £6,461.53

-  Sloane Square Station
-  Office and Dining Room
-  Outstanding Central Location
-  Fully Furnished Apartment
-  Short Let - Bills Included

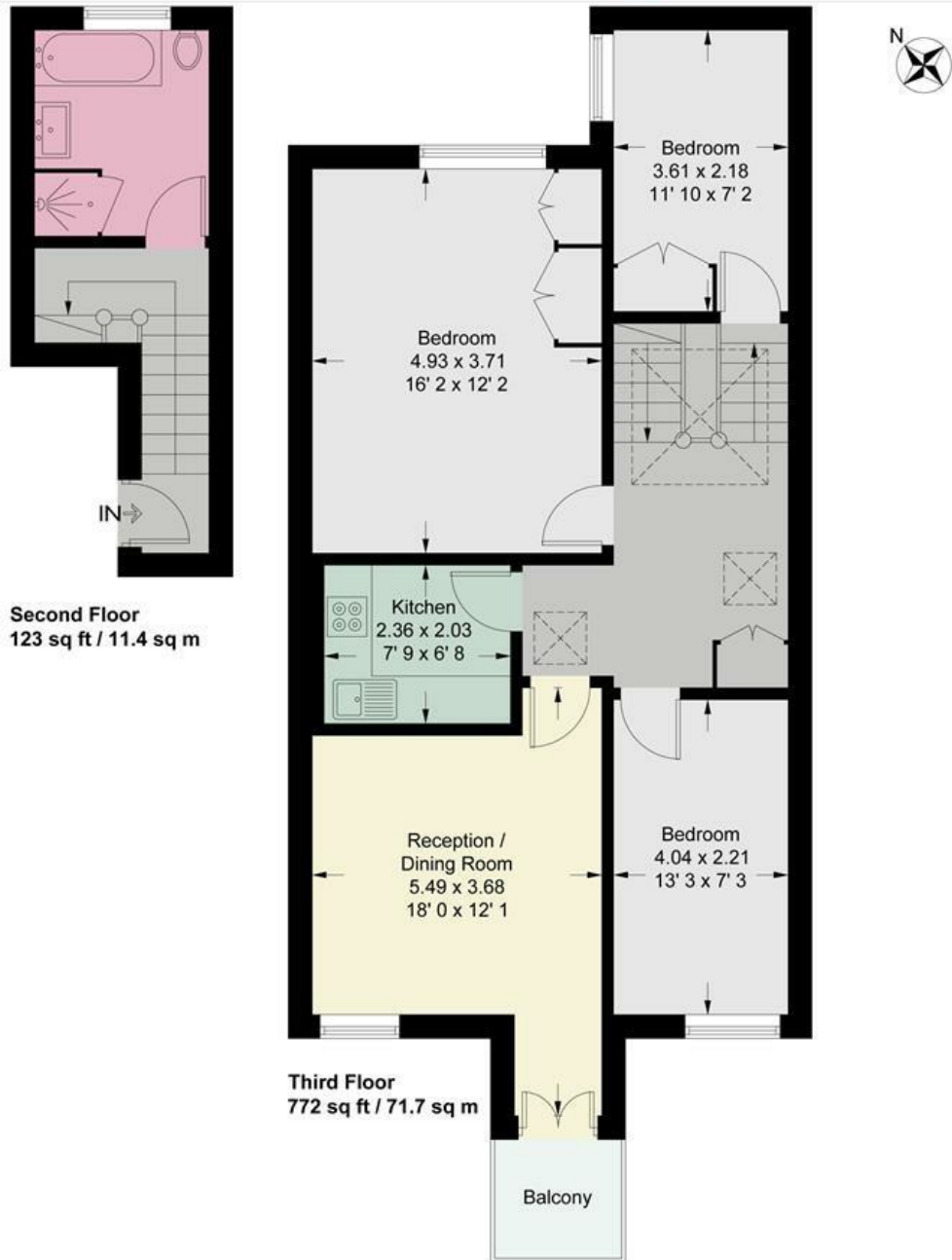


OPEN 7 DAYS A WEEK • Weekdays until 9pm • Weekends until 5pm

0208 878 8688

Sloane Gardens

Approximate Gross Internal Area = 895 sq ft / 83.1 sq m



This plan is not to scale and must be used as layout guidance only. All measurements and areas are approximate and should not be relied upon to provide accurate information. This plan must not be relied upon when making property valuations, design considerations or any other such relevant decisions. We accept no responsibility or liability (whether in contract, tort or otherwise) in relation to any loss whatsoever arising from or in connection with any use of this plan or the adequacy, accuracy or completeness of it or any information within it.



| Energy Efficiency Rating | | |
|--|-------------------------|-----------|
| | Current | Potential |
| <i>Very energy efficient - lower running costs</i> | | |
| (92 plus) A | | |
| (81-91) B | | |
| (69-80) C | | |
| (55-68) D | | |
| (39-54) E | | |
| (21-38) F | | |
| (1-20) G | | |
| <i>Not energy efficient - higher running costs</i> | | |
| England & Wales | EU Directive 2002/91/EC | |

| Environmental Impact (CO ₂) Rating | | |
|---|-------------------------|-----------|
| | Current | Potential |
| <i>Very environmentally friendly - lower CO₂ emissions</i> | | |
| (92 plus) A | | |
| (81-91) B | | |
| (69-80) C | | |
| (55-68) D | | |
| (39-54) E | | |
| (21-38) F | | |
| (1-20) G | | |
| <i>Not environmentally friendly - higher CO₂ emissions</i> | | |
| England & Wales | EU Directive 2002/91/EC | |

