



**JAMES
ANDERSON**

Portman Avenue
London SW14
£650,000



Portman Avenue London SW14

A superb, light and spacious two-bedroom period first floor flat, neatly situated on this highly desirable road and benefiting from a share of the freehold. This property occupies the first and second floors of an attractive period building and is arranged to provide a spacious reception room with an attractive fireplace, a generous bedroom, a modern family bathroom, and a separate eat in kitchen/dining room on the first floor. The second floor offers a spacious principal bedroom with ample eaves storage and a second shower bathroom.

Portman Avenue is superbly positioned to enjoy East Sheen's vibrant lifestyle, with easy access to Waitrose, independent boutiques, restaurants, coffee shops, and popular gastro pubs. Excellent transport links are close at hand, including Mortlake Station which is just 0.2 miles away and several bus routes serving the surrounding areas.

Tenure: Share of freehold
Service charge: £0
Ground rent: £0













NORTH CAROLINA
AC-4830



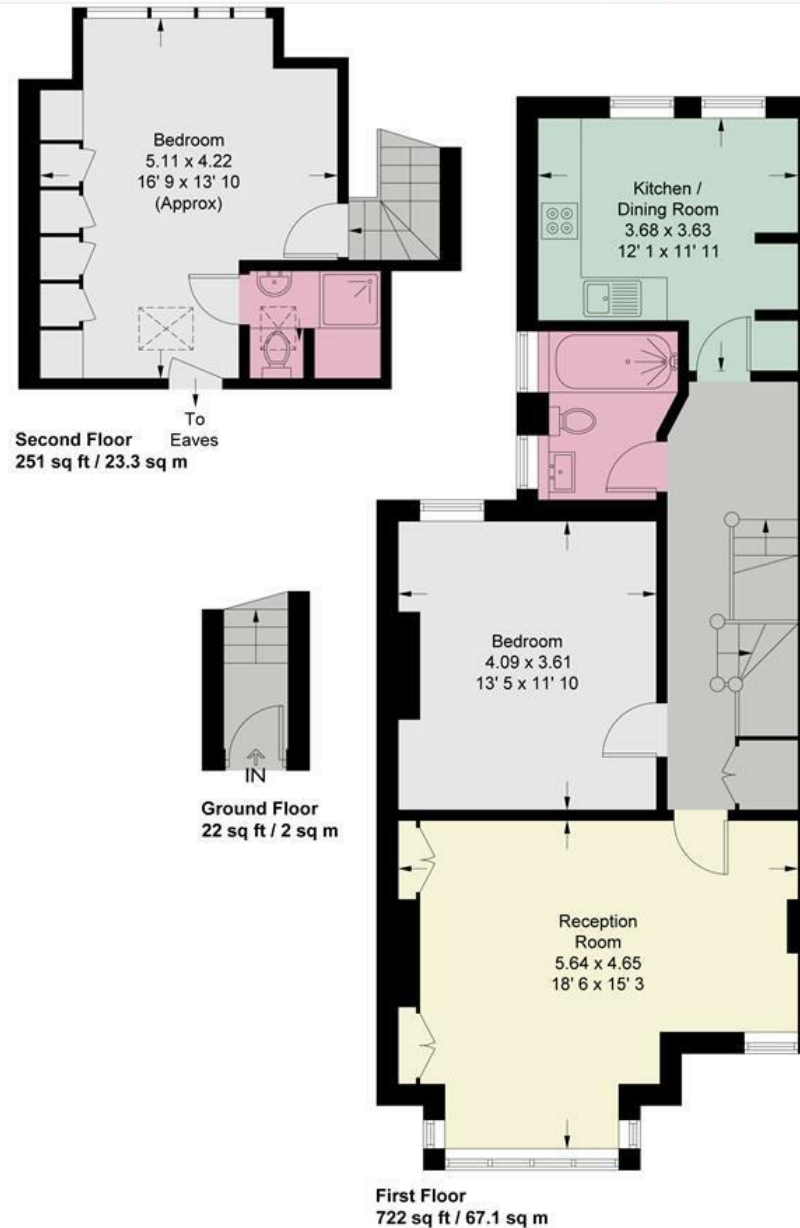




JAMES
ANDERSON

Portman Avenue

Approximate Gross Internal Area = 995 sq ft / 92.4 sq m



363 Upper Richmond Road West
East Sheen
SW14 7NX

020 8876 6611
sales@jasheen.co.uk
www.jamesanderson.co.uk

This plan is not to scale and must be used as layout guidance only. All measurements and areas are approximate and should not be relied upon to provide accurate information. This plan must not be relied upon when making property valuations, design considerations or any other such relevant decisions. We accept no responsibility or liability (whether in contract, tort or otherwise) in relation to any loss whatsoever arising from or in connection with any use of this plan or the adequacy, accuracy or completeness of it or any information within it.

