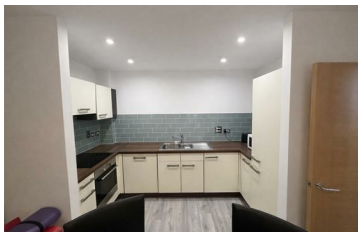




JAMES
ANDERSON



TO LET

Hurlington Court, London, SW15

£1,750 Per Month

Per Month

A beautifully presented one bedroom modern apartment situated on the ground floor within Queen Marys Place. The accommodation comprises modern kitchen boasting integrated appliances, ample storage, open plan reception/dining area with views over the courtyard. The double bedroom is light and spacious with fitted wardrobes.

Additional benefits include stunning communal grounds and an on site residents gym. Queen Marys Place is a remarkable development of recently built and beautifully refurbished apartments and houses. These homes enjoy a superb location in South West London, set within easy reach of cosmopolitan Putney, Wimbledon Common, Barnes Station and beautiful Richmond Park.



One Double Bedroom



Modern Bathroom



Open Plan Reception



Modern Kitchen



EPC C / Council Tax D / Holding Deposit £403.84



Barnes



Roehampton University



Available Now



On Site Gym



Deposit £2019.23



OPEN 7 DAYS A WEEK • Weekdays until 9pm • Weekends until 5pm

0208 785 4400

