



JAMES
ANDERSON

Bexhill Road
London SW14
£875,000



Bexhill Road London SW14

Bright, spacious, and exceptionally inviting, this stunning modern home is tucked away in a quiet, charming cul-de-sac in East Sheen. Just a short walk from Mortlake Station, this superb property offers off-street parking and beautifully designed living spaces throughout.

The accommodation includes a master bedroom with an en-suite, a second double bedroom, a family bathroom, a stylish and functional kitchen/dining area, and a private garden. Finished to an impeccable standard, the home exemplifies contemporary quality and comfort. Additional features include a downstairs WC, side access to the garden, and potential to extend into the loft to create a third bedroom, subject to the usual local authority consents.

Bexhill Road is conveniently located within a short walk of Waitrose and just 0.3 miles from Mortlake Station. Families will benefit from outstanding OFSTED-rated schools nearby, including Thomson House and Holy Trinity. This is a rare opportunity to acquire a modern home in a highly desirable East Sheen location.



















JAMES
ANDERSON

Bexhill Road

Approximate Gross Internal Area = 1020 sq ft / 94.8 sq m
(Including Reduced Headroom)
Reduced Headroom = 9 sq ft / 0.8 sq m



JAMES
ANDERSON

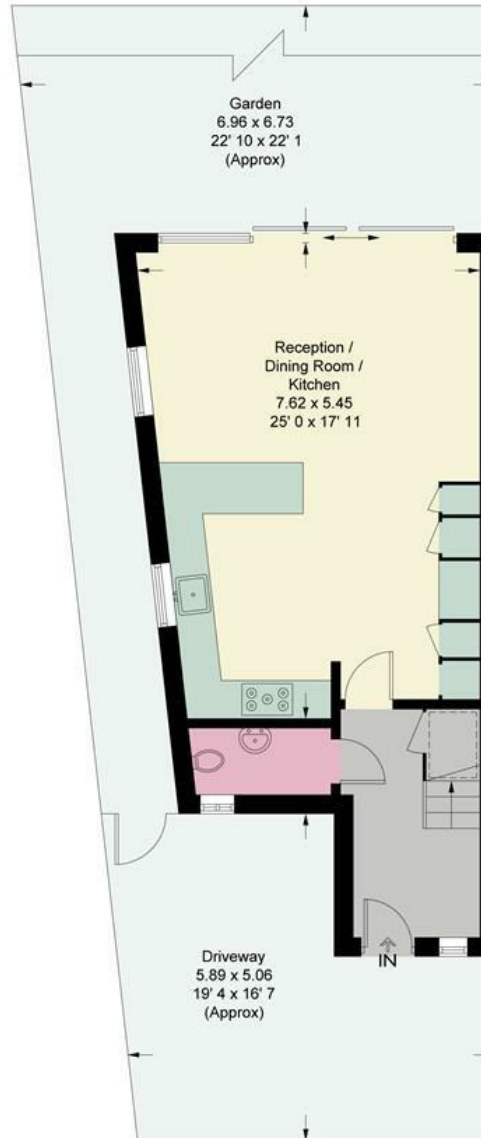


363 Upper Richmond Road West
East Sheen
SW14 7NX

020 8876 6611

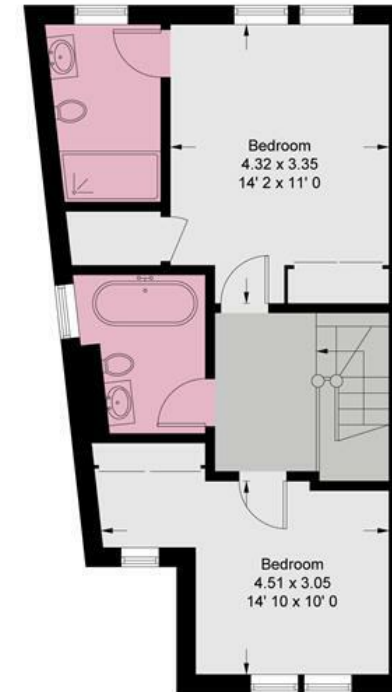
sales@jasheen.co.uk

www.jamesanderson.co.uk



Ground Floor
513 sq ft / 47.7 sq m
(Including Reduced Headroom)

= Reduced headroom below 1.5m / 5'0



First Floor
507 sq ft / 47.1 sq m

This plan is not to scale and must be used as layout guidance only. All measurements and areas are approximate and should not be relied upon to provide accurate information. This plan must not be relied upon when making property valuations, design considerations or any other such relevant decisions. We accept no responsibility or liability (whether in contract, tort or otherwise) in relation to any loss whatsoever arising from or in connection with any use of this plan or the adequacy, accuracy or completeness of it or any information within it.

