



JAMES
ANDERSON



TO LET

Colston Road, East Sheen, SW14

£2,495 Per Month

Per Month

Nestled along Colston Road, this spacious home spans an impressive 1,087 square feet. There are four well-proportioned bedrooms, a bright reception, fully fitted kitchen and two bathrooms. This split level flat has been tastefully decorated and benefits from double glazed windows. East Sheen is known for its vibrant community and excellent local amenities, including shops, parks, and schools, making it a desirable location for families and professionals alike. The property is 0.4 miles from Mortlake station, providing easy access into central London.



Four Bedrooms



Two Bathrooms



Bright Reception



Fully Fitted Kitchen



EPC D | Council Tax | Deposit £2878.84



Mortlake Station



Thomson House Primary School



Central Location



Close to Richmond Park



Holding Deposit £575.76 | Minimum Term 12 Months

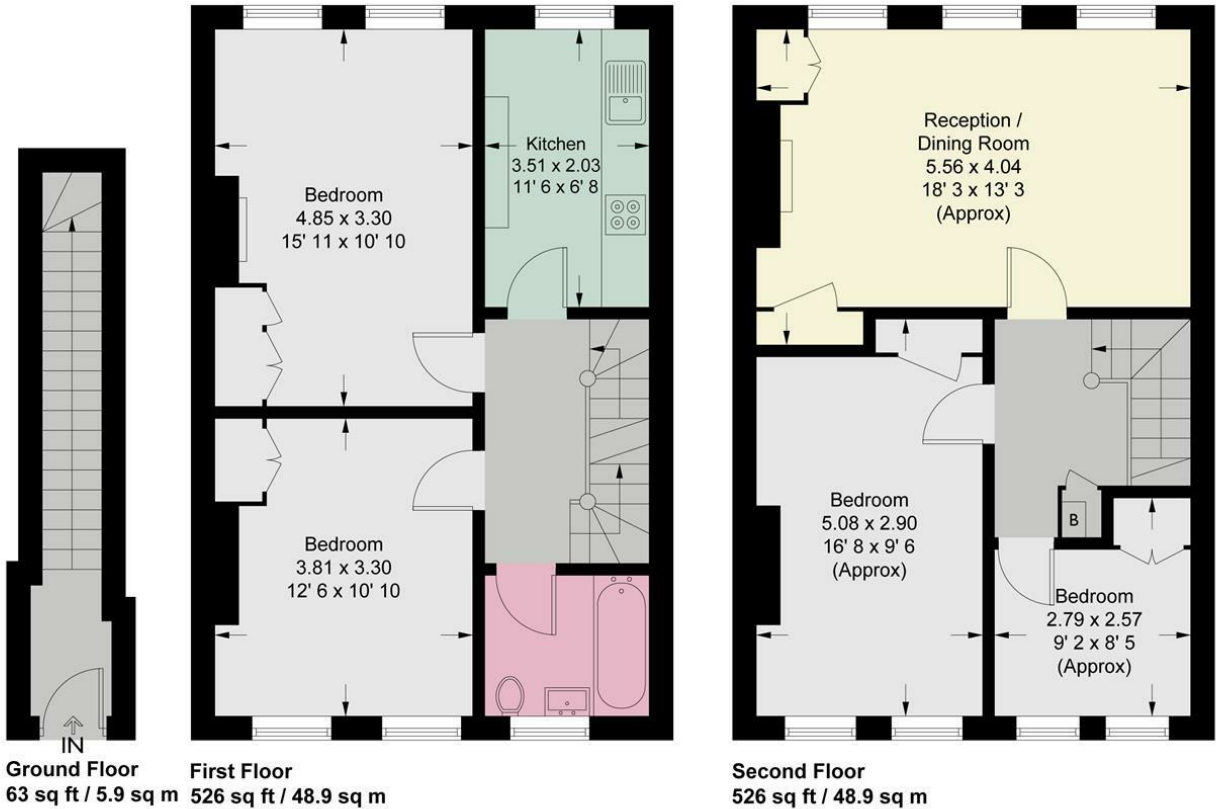


OPEN 7 DAYS A WEEK • Weekdays until 9pm • Weekends until 5pm

0208 876 6611

Colston Road

Approximate Gross Internal Area = 1115 sq ft / 103.7 sq m



This plan is not to scale and must be used as layout guidance only. All measurements and areas are approximate and should not be relied upon to provide accurate information. This plan must not be relied upon when making property valuations, design considerations or any other such relevant decisions. We accept no responsibility or liability (whether in contract, tort or otherwise) in relation to any loss whatsoever arising from or in connection with any use of this plan or the adequacy, accuracy or completeness of it or any information within it.

