



**JAMES
ANDERSON**



TO LET

Wyatt Drive, London, SW13

£9,000 Per Month

Per Month

An exceptional five bedroom semi-detached house located in the popular Barnes Waterside development. Directly opposite a picturesque pond, this large family house benefits from a spacious and modern kitchen and dining area with bi-folding doors opening on to a large garden. It also has a large living room as well as a guest W.C and additional reception room. The extremely spacious principal bedroom on the first floor offers both a walk-in wardrobe and an en-suite bathroom. There are also four large double bedrooms and two bathrooms located across the first and second floor.

Further benefits include a utility room, driveway with space to park two cars and a garage which can be accessed from the garden or driveway.

Wyatt Drive is located with easy access to Hammersmith tube, the River Thames and a number of outstanding local schools.



Five Bedrooms



Three Bathrooms



Two Reception Rooms



Stunning Kitchen / Dinner



EPC D / Council Tax H / Deposit £9,623.07



Hammersmith Tube



St Pauls School



Barnes Waterside



Garage and Off Street Parking



12 Month Minimum Term / Holding Deposit £1,603.84



OPEN 7 DAYS A WEEK • Weekdays until 9pm • Weekends until 5pm

0208 878 8688

Wyatt Drive

Approximate Gross Internal Area = 2758 sq ft / 256.3 sq m

(Excluding Reduced Headroom / Eaves)

Reduced Headroom / Eaves = 409 sq ft / 38 sq m

Garage = 197 sq ft / 18.3 sq m

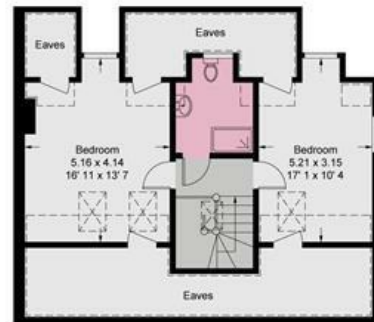
Total = 3364 sq ft / 312.6 sq m



JAMES ANDERSON



□ = Reduced headroom below 1.5m / 5'0"



This plan is not to scale and must be used as layout guidance only. All measurements and areas are approximate and should not be relied upon to provide accurate information. This plan must not be relied upon when making property valuations, design considerations or any other such relevant decisions. We accept no responsibility or liability (whether in contract, tort or otherwise) in relation to any loss whatsoever arising from or in connection with any use of this plan or the adequacy, accuracy or completeness of it or any information within it.

