



JAMES
ANDERSON



FOR SALE

Kersfield Road, London, SW15

£485,000

Price Guide

Nestled in the tranquil and picturesque Kersfield Road, Putney, this splendid purpose-built flat offers a delightful living experience. Spanning an impressive 703 square feet, this split-level residence occupies the second and third floors, providing a sense of space and privacy.

The property boasts two generously sized double bedrooms with fitted wardrobes, a modern shower room is tastefully designed and presented in excellent condition. The heart of the home is the open-plan living area, which is bathed in natural light thanks to the large windows, creating a warm and inviting atmosphere. It also benefits from original parquet flooring. The modern fitted kitchen seamlessly integrates with the living space, making it ideal for entertaining guests or enjoying quiet evenings at home.

In superb condition throughout, this flat is ready for you to move in without the hassle of renovation. The property benefits from an EPC rating of C, reflecting its energy efficiency, and is offered with no onward chain, simplifying the buying process.

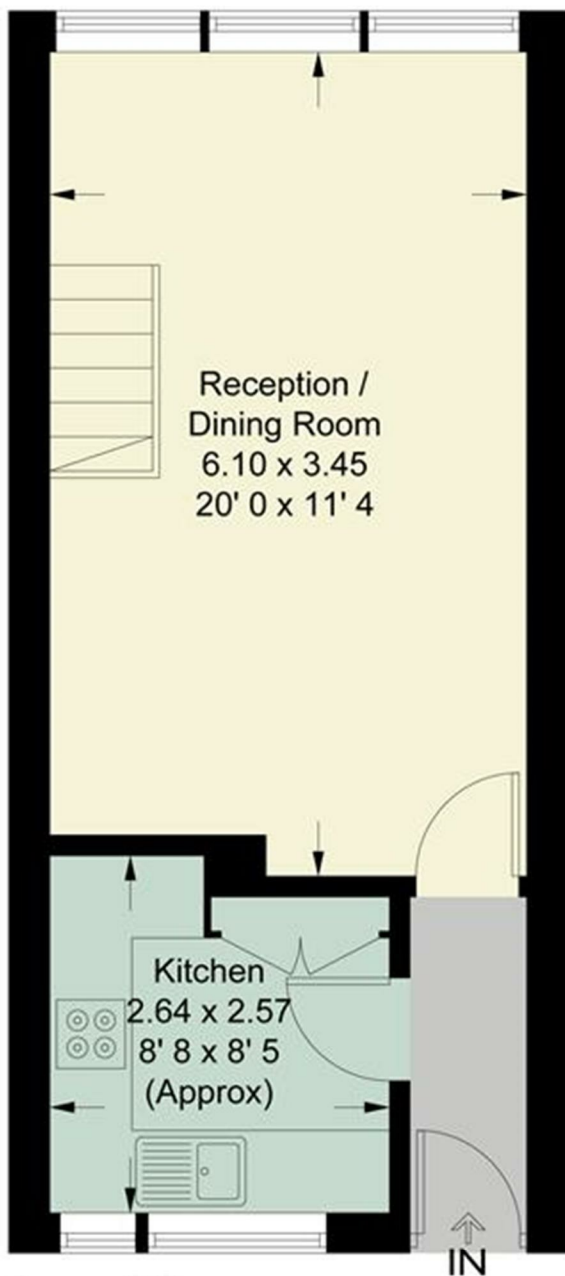
Situated on a peaceful, tree-lined street, residents can enjoy the serenity of the surroundings while still being well-connected to the vibrant life of London. Excellent transport links ensure that you can easily access the city and beyond. Additionally, the property includes a garage and access to well-maintained communal gardens, providing a perfect spot for relaxation or social gatherings.

This flat is an exceptional opportunity for those seeking a comfortable and stylish home in a sought-after location. Whether you are a first-time buyer or looking to invest, this property is not to be missed.

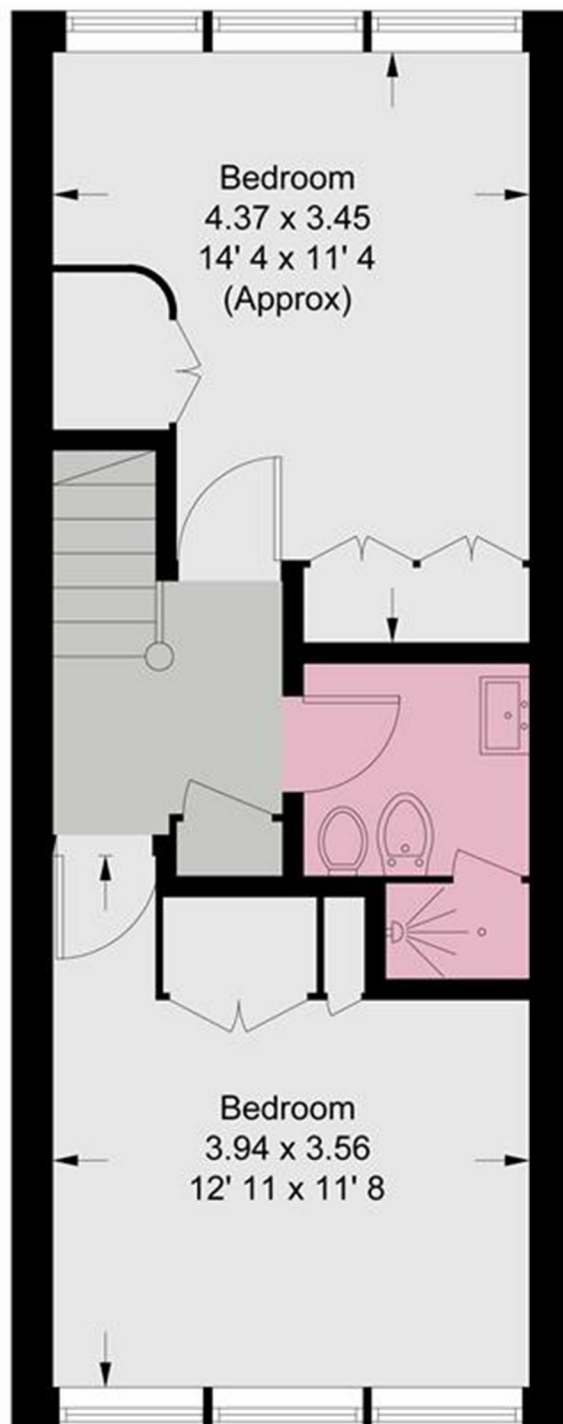


OPEN 7 DAYS A WEEK • Weekdays until 9pm • Weekends until 5pm

0208 785 4400



Second Floor
328 sq ft / 30.5 sq m



Third Floor
375 sq ft / 34.9 sq m

