



JAMES
ANDERSON

Tudor Gardens
Barnes SW13
£1,330,000



Tudor Gardens Barnes SW13

A superbly extended and refurbished mid-terrace home, neatly situated in a highly desirable residential road in Barnes. The property is beautifully presented, with modern, light and spacious accommodation arranged over three floors to provide three double bedrooms, a single bedroom, and two bathrooms, that includes a spacious principal bedroom suite on the second floor, which has ample storage and a stylish en-suite shower room. The ground floor accommodation offers a mostly open plan layout leading from the entrance hall to provide a bright sitting room, with attractive fireplace, which then flows through to a fantastic kitchen/dining/family area that offers integrated appliances, stone worktops, and an impressive island. There is access from the kitchen area out to an attractive enclosed rear paved garden, raised borders and rear pedestrian access. Tudor Gardens is a popular location close to outstanding local schools, the prestigious Roehampton Club, and is conveniently placed for the shops and amenities on White Hart Lane and Barnes Village. Barnes and Barnes Bridge Stations are within walking distance.

















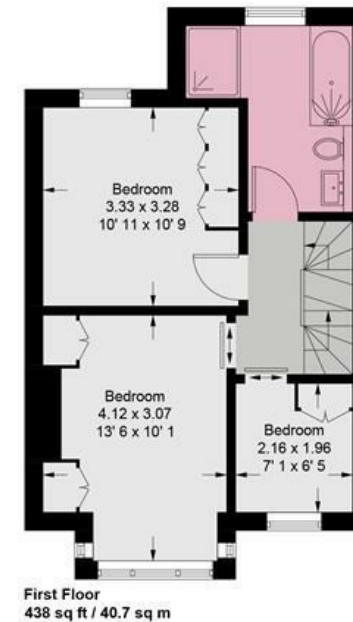


Tudor Gardens

Approximate Gross Internal Area = 1335 sq ft / 124 sq m



JAMES
ANDERSON



JAMES
ANDERSON

This plan is not to scale and must be used as layout guidance only. All measurements and areas are approximate and should not be relied upon to provide accurate information. This plan must not be relied upon when making property valuations, design considerations or any other such relevant decisions. We accept no responsibility or liability (whether in contract, tort or otherwise) in relation to any loss whatsoever arising from or in connection with any use of this plan or the adequacy, accuracy or completeness of it or any information within it.





64 Barnes High Street
Barnes
SW13 9LD

020 8876 0100
sales@jabarnes.co.uk
www.jamesanderson.co.uk

