



JAMES
ANDERSON



TO LET

Kentwode Green, London, SW13

£3,750 Per Month

Per Month

This beautifully presented and larger-than-average four-bedroom house offers versatile living space across three well-appointed floors. Designed with family living in mind, the property features three generous reception rooms, a modern fully-fitted kitchen, and a bright conservatory that opens onto a private, well-maintained garden.

The home boasts three bathrooms. Each of the four bedrooms is generously proportioned, with ample natural light and thoughtful storage solutions throughout.

Located in a sought-after residential area, the property is ideally positioned close to several outstanding schools, including Harrodian, St Paul's, the Swedish School, and Lowther Primary. Excellent transport links are also within easy reach, with Barnes Station and Hammersmith Tube offering swift connections into Central London.



Four Bedroom House



Three Bathrooms



Three Reception Rooms



Modern Kitchen



EPC D / Council Tax B / Deposit £4,326.92



Barnes Station



Excellent Local Schools



River Thames



Large Private Garden

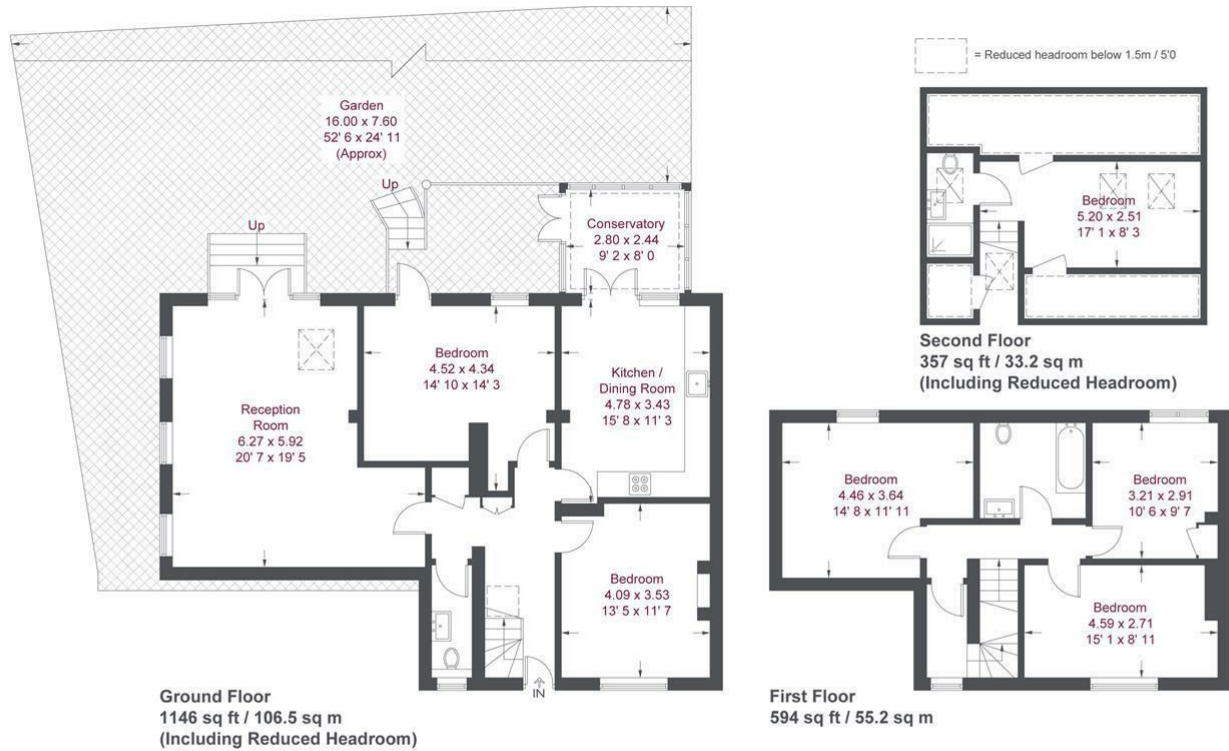


12 Month Minimum Term / £865.38 Holding Deposit



OPEN 7 DAYS A WEEK • Weekdays until 9pm • Weekends until 5pm

0208 878 8688



Kentwode Green

Approximate Gross Internal Area = 1943 sq ft / 180.6 sq m
(Excluding Reduced Headroom)
Reduced Headroom = 154 sq ft / 14.3 sq m
Total = 2097 sq ft / 194.9 sq m
(Including Reduced Headroom)

Not to scale, for guidance only and must not be relied upon as a statement of fact
All measurements and areas are approximate only and have been prepared in
accordance with the current edition of the RICS Code of Measuring Practice

