



JAMES  
ANDERSON



## TO LET

Fulham Road, Fulham, SW6

**£2,400 Per Month**

Per Month

Large well presented two double bedroom flat to rent located close to Putney Bridge and Parsons Green tube station. The property comprises a large bright reception room with high ceilings, two double bedrooms, a modern bathroom and modern kitchen.



Two Double Bedrooms



Modern Bathroom



Large Bright Reception



Modern Kitchen



EPC C / Council Tax E / Holding Deposit £553.84



Putney Bridge



Holy Cross Catholic



River Thames



Unfurnished



Minimum Term 12 Months / Deposit £2769.23

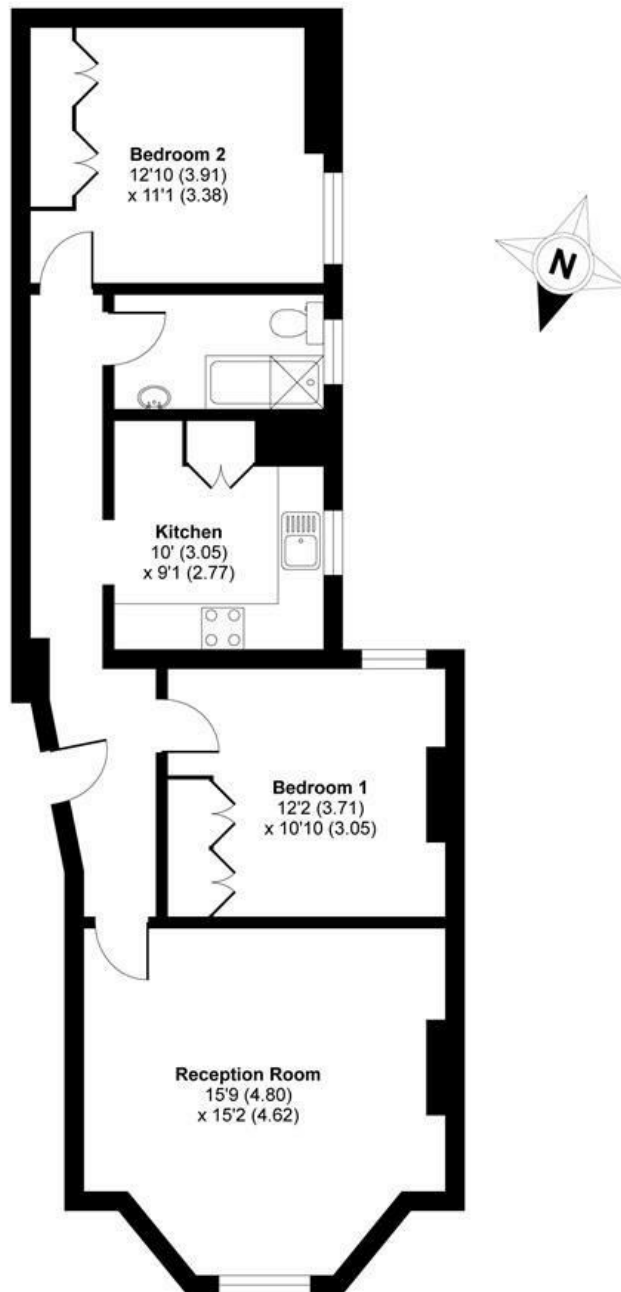


OPEN 7 DAYS A WEEK • Weekdays until 9pm • Weekends until 5pm

**0208 785 4400**

# Drive Mansions, Fulham Road, London, SW6


APPROX. GROSS INTERNAL FLOOR AREA 760 SQ FT 70.6 SQ METRES



FIRST FLOOR

Whilst every attempt has been made to ensure the accuracy of the floor plan contained here, measurements of doors, windows and rooms are approximate and no responsibility is taken for any error, omission or misstatement. These plans are for representation purposes only as defined by RICS Code of Measuring Practice and should be used as such by any prospective purchaser. Specifically no guarantee is given on the total square footage of the property if quoted on this plan. Any figure given is for initial guidance only and should not be relied on as a basis of valuation.

Copyright nichecom.co.uk 2018 Produced for James Anderson REF : 371755

Energy Efficiency Rating		
	Current	Potential
Very energy efficient - lower running costs		
(92 plus) <b>A</b>		
(81-91) <b>B</b>		
(69-80) <b>C</b>		
(55-68) <b>D</b>		
(39-54) <b>E</b>		
(21-38) <b>F</b>		
(1-20) <b>G</b>		
Not energy efficient - higher running costs		
	74	83
<b>England &amp; Wales</b>	EU Directive 2002/91/EC 	

Environmental Impact (CO <sub>2</sub> ) Rating		
	Current	Potential
Very environmentally friendly - lower CO <sub>2</sub> emissions		
(92 plus) <b>A</b>		
(81-91) <b>B</b>		
(69-80) <b>C</b>		
(55-68) <b>D</b>		
(39-54) <b>E</b>		
(21-38) <b>F</b>		
(1-20) <b>G</b>		
Not environmentally friendly - higher CO <sub>2</sub> emissions		
<b>England &amp; Wales</b>	EU Directive 2002/91/EC 