



JAMES
ANDERSON



TO LET

Elm Bank Mansions, London, SW13

£1,950 Per Month

Per Month

This well presented one double bedroom apartment is located in a sought after development in central Barnes. The accommodation comprises one double bedroom with built in wardrobes, reception room with modern open plan kitchen and fully fitted bathroom. Elm Bank Mansions is located close to Barnes Bridge Mainline station and within a few minutes walk of Barnes Village.



One Double Bedroom



Modern Bathroom



Reception Room



Open Plan Kitchen



EPC D/ Council Tax C / £2,250 Deposit



Barnes Bridge Station



St Pauls School



Barnes Village



Walk in Shower



12 Months Minimum Term / £450 Holding Deposit



OPEN 7 DAYS A WEEK • Weekdays until 9pm • Weekends until 5pm

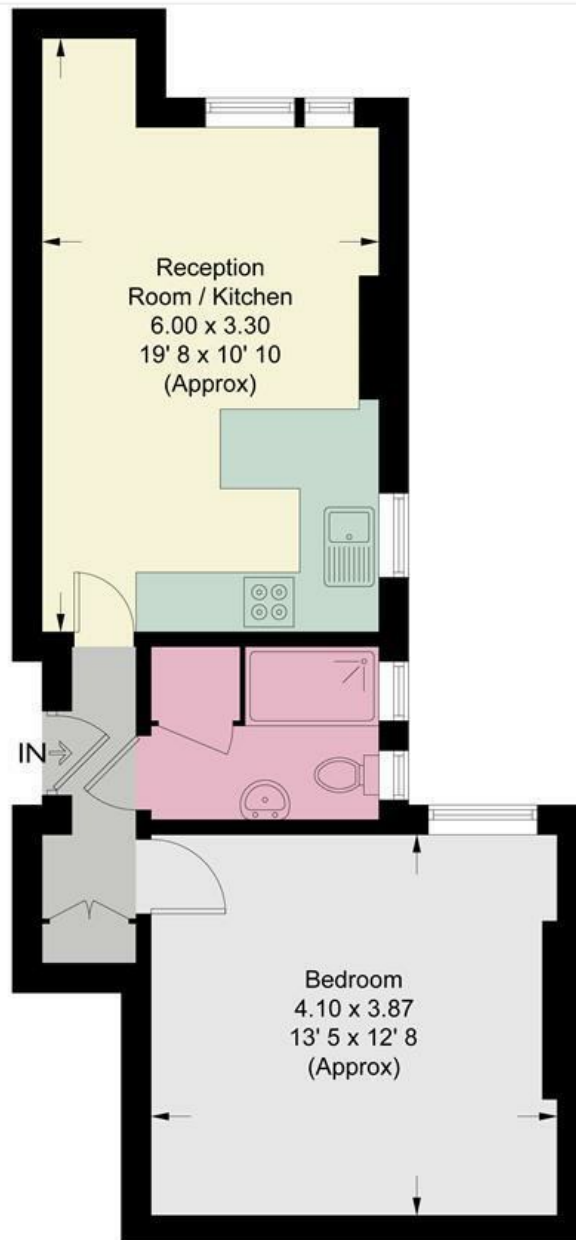
0208 878 8688

Elm Bank Mansions

Approximate Gross Internal Area = 451 sq ft / 41.9 sq m



**JAMES
ANDERSON**



First Floor

This plan is not to scale and must be used as layout guidance only. All measurements and areas are approximate and should not be relied upon to provide accurate information. This plan must not be relied upon when making property valuations, design considerations or any other such relevant decisions. We accept no responsibility or liability (whether in contract, tort or otherwise) in relation to any loss whatsoever arising from or in connection with any use of this plan or the adequacy, accuracy or completeness of it or any information within it.



Energy Efficiency Rating		
	Current	Potential
Very energy efficient - lower running costs		
(92 plus) A		
(81-91) B		
(69-80) C		
(55-68) D		
(39-54) E		
(21-38) F		
(1-20) G		
Not energy efficient - higher running costs		
	68	75
England & Wales	EU Directive 2002/91/EC	

Environmental Impact (CO ₂) Rating		
	Current	Potential
Very environmentally friendly - lower CO ₂ emissions		
(92 plus) A		
(81-91) B		
(69-80) C		
(55-68) D		
(39-54) E		
(21-38) F		
(1-20) G		
Not environmentally friendly - higher CO ₂ emissions		
England & Wales	EU Directive 2002/91/EC	

