



JAMES
ANDERSON



FOR SALE

The Terrace, Barnes, SW13

£400,000

Offers In Excess Of

A one-bedroom mansion block apartment neatly situated next to the River Thames and Barnes Bridge Station. Located on the first floor of this highly regarded and attractive Edwardian mansion block, the accommodation comprises entrance hall with storage, a light and spacious reception room which is open-plan to the kitchen, a modern shower room, and a large double bedroom. The property further benefits from ample storage throughout, a long lease and is available for sale with no onward chain. The Edwardian estate as a whole enjoys on-site portage, CCTV security, airy communal halls and stairwells, communal gardens and bike storage, along with a strong residents' association and comprehensive website <https://elmbankmansions.org>. Elm Bank Mansions is located moments from the amenities of Barnes Village and White Hart Lane. For the commuter Barnes Bridge station is a short walk away, while close proximity to both the M3 and M4 motorways makes access to the South and West very easy.



One Double Bedroom



Modern Shower Room



Light & Spacious Living Area



Modern Kitchen



EPC Rating D / Council Tax C / Share Of Freehold



Barnes Bridge Station



Excellent Local Schools



First Floor



No Onward Chain



Attractive Mansion Block Apartment



OPEN 7 DAYS A WEEK • Weekdays until 9pm • Weekends until 5pm

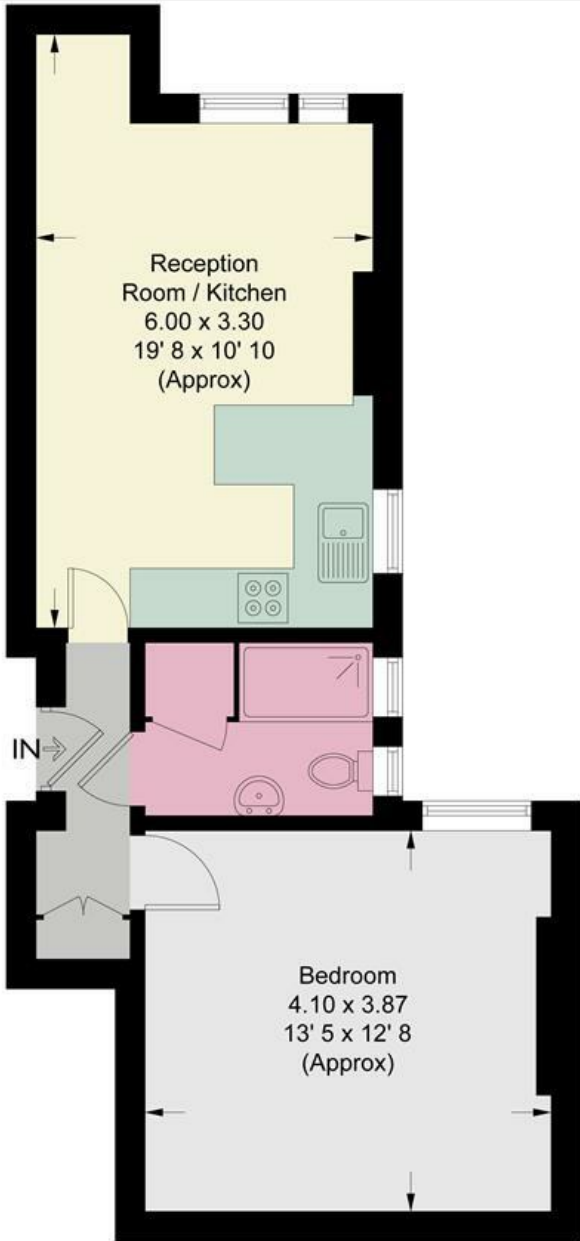
020 8876 0100

Elm Bank Mansions

Approximate Gross Internal Area = 451 sq ft / 41.9 sq m



JAMES
ANDERSON



First Floor

This plan is not to scale and must be used as layout guidance only. All measurements and areas are approximate and should not be relied upon to provide accurate information. This plan must not be relied upon when making property valuations, design considerations or any other such relevant decisions. We accept no responsibility or liability (whether in contract, tort or otherwise) in relation to any loss whatsoever arising from or in connection with any use of this plan or the adequacy, accuracy or completeness of it or any information within it.

