



JAMES  
ANDERSON

Palewell Park  
London SW14  
£600,000





## Palewell Park London SW14

Set on the highly sought-after Palewell Park, this superb ground floor period flat has been recently refurbished, blending timeless character with modern finishes throughout. The property comprises two generous double bedrooms, a contemporary family bathroom, and a bright, spacious open-plan kitchen and living area with French doors opening onto a private west-facing garden making this perfect for evening relaxation or entertaining. Accessed via its own private entrance, the flat further benefits from a useful storage area, excellent built-in storage throughout, and a share of freehold.

Palewell Park is a beautiful tree-lined road just moments from the wide array of shops, cafes, and restaurants on East Sheen's bustling high street. Richmond Park's Sheen Gate is only a short walk away, as is Mortlake Station with direct links to central London.

Tenure: Share of freehold  
Service charge: £1,200 per year  
Ground rent: £0





































JAMES  
ANDERSON



## Palewell Park

Approximate Gross Internal Area = 628 sq ft / 58.3 sq m



JAMES  
ANDERSON

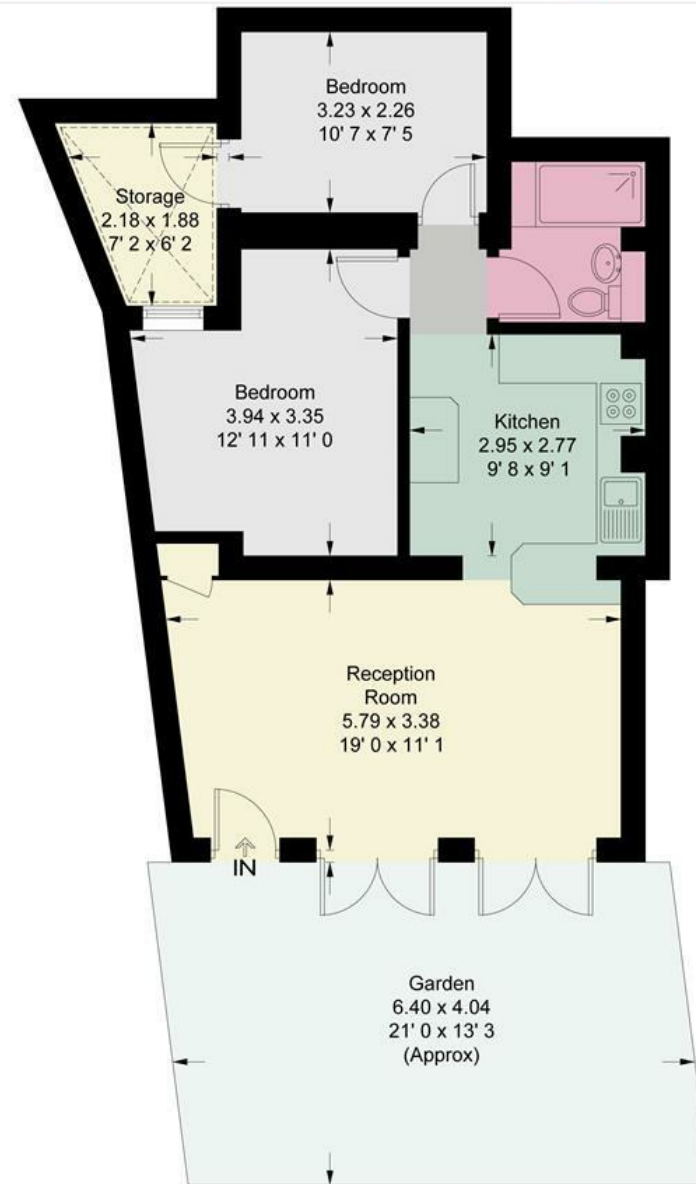


363 Upper Richmond Road West  
East Sheen  
SW14 7NX

020 8876 6611

[sales@jasheen.co.uk](mailto:sales@jasheen.co.uk)

[www.jamesanderson.co.uk](http://www.jamesanderson.co.uk)



Ground Floor

This plan is not to scale and must be used as layout guidance only. All measurements and areas are approximate and should not be relied upon to provide accurate information. This plan must not be relied upon when making property valuations, design considerations or any other such relevant decisions. We accept no responsibility or liability (whether in contract, tort or otherwise) in relation to any loss whatsoever arising from or in connection with any use of this plan or the adequacy, accuracy or completeness of it or any information within it.

