



**JAMES
ANDERSON**

Mortlake High Street
Mortlake SW14
£750,000



Mortlake High Street Mortlake SW14

A charming first floor mansion block apartment neatly situated in Mortlake, close to local shops and amenities, and is available for sale with no onward chain. This spacious and light property has accommodation arranged to provide three bedrooms, a modern bathroom, and a large living room with an attractive fireplace, which is open plan to a lovely modern kitchen/dining room with integrated appliances and contemporary work surfaces. There is access from the kitchen down to the communal garden at the rear of the building. Cowley Mansions is located close to the amenities of White Hart Lane and Barnes village. For the commuter, local bus services provide access into Richmond, Hammersmith and Putney with its underground links. Barnes Bridge and Mortlake stations are also within easy reach. Outstanding local schools are also within walking distance from the property.















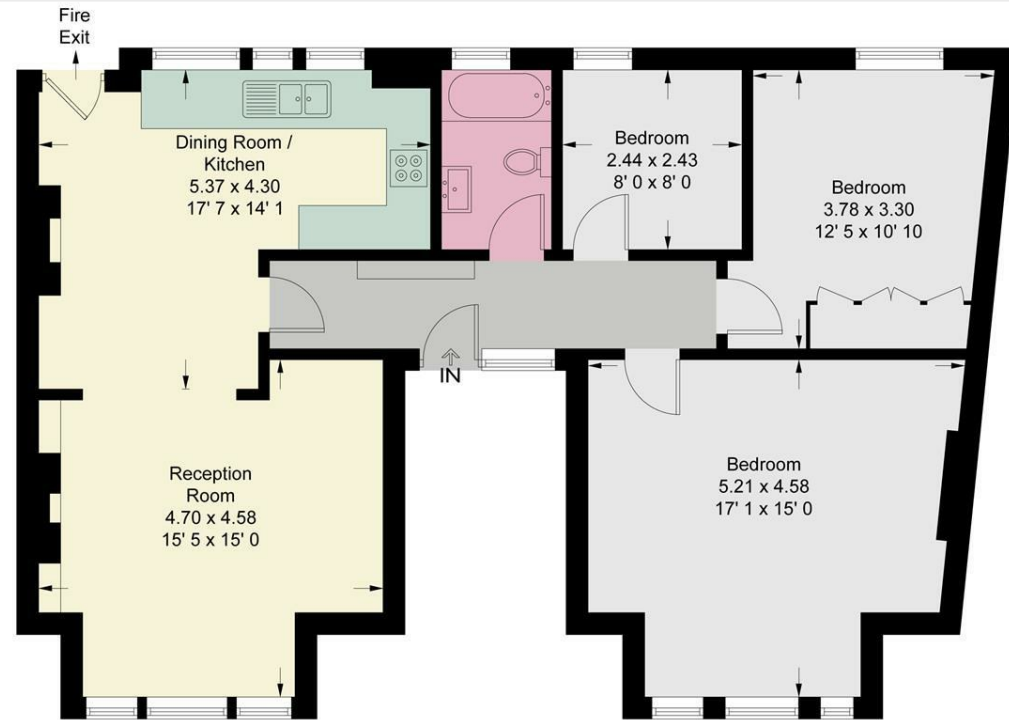


Cowley Mansions

Approximate Gross Internal Area = 972 sq ft / 90.3 sq m



JAMES
ANDERSON



First Floor

This plan is not to scale and must be used as layout guidance only. All measurements and areas are approximate and should not be relied upon to provide accurate information. This plan must not be relied upon when making property valuations, design considerations or any other such relevant decisions. We accept no responsibility or liability (whether in contract, tort or otherwise) in relation to any loss whatsoever arising from or in connection with any use of this plan or the adequacy, accuracy or completeness of it or any information within it.



JAMES
ANDERSON



64 Barnes High Street
Barnes
SW13 9LD

020 8876 0100
sales@jabarnes.co.uk
www.jamesanderson.co.uk

