



**JAMES
ANDERSON**

Alton Road
Putney SW15
Guide Price £425,000



Alton Road Putney SW15

This well presented two bedroom, two bathroom modern flat is located on Alton Road, Roehampton, within close proximity to Richmond Park, Putney Heath and Wimbledon Common. The property comprises a lovely bright open plan kitchen / reception room, two double bedrooms (one with an en-suite bathroom) and a family bathroom. The property also benefits from gated off-street parking.

Alton Road runs off Roehampton Lane and is therefore a short walk from the wide open spaces of Putney Heath and Wimbledon Common. Also close at hand is Roehampton High Street and Waitrose local. There also numerous buses with swift access to Putney, Barnes and beyond.

Leasehold - 143 Years Remain

Council Tax - B

EPC Rating - B

Service charge £3100 PA

Ground rent £250 PA















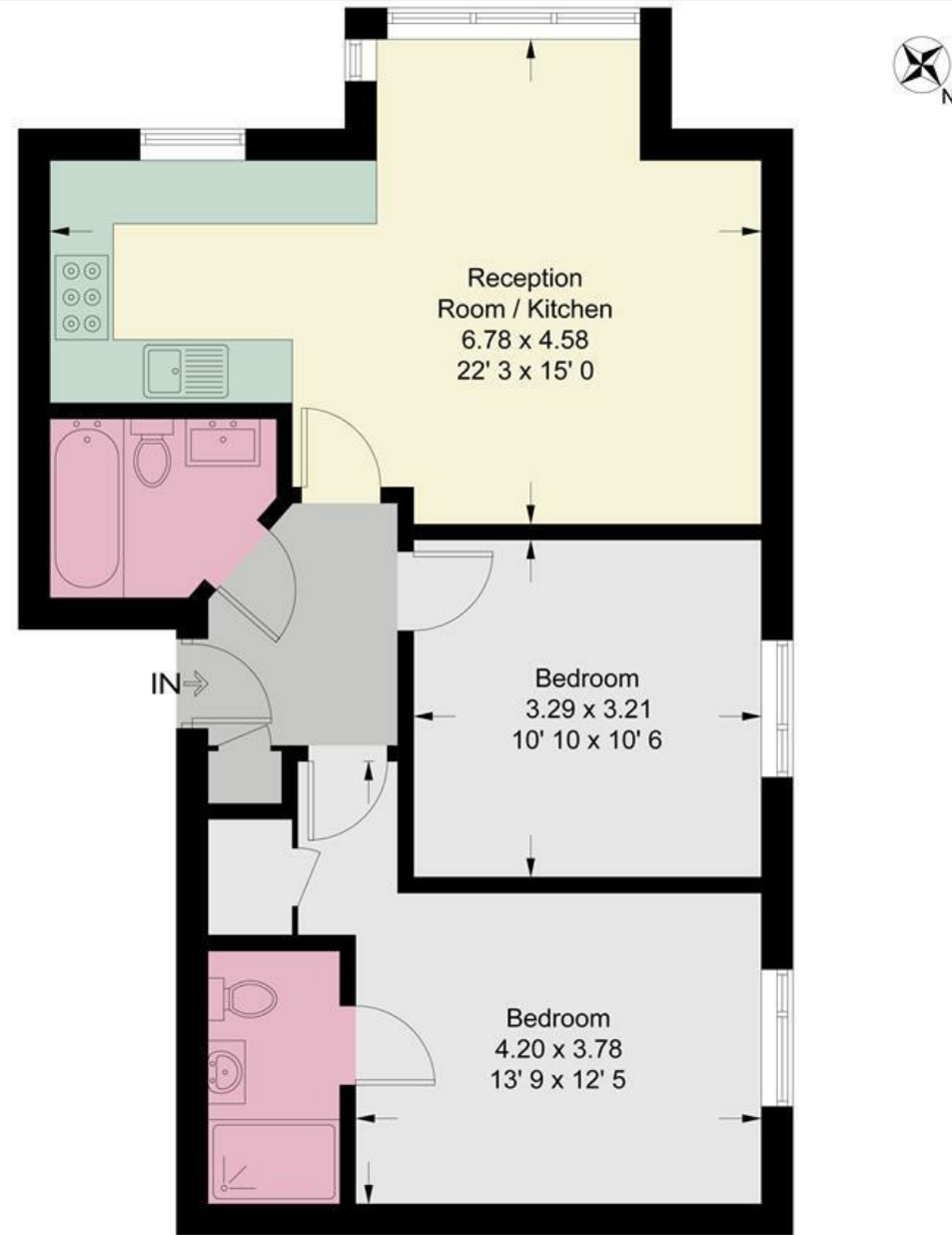


Alton Road, London

Approximate Gross Internal Area = 659 sq ft / 61.2 sq m



JAMES
ANDERSON



Ground Floor



JAMES
ANDERSON

This plan is not to scale and must be used as layout guidance only. All measurements and areas are approximate and should not be relied upon to provide accurate information. This plan must not be relied upon when making property valuations, design considerations or any other such relevant decisions. We accept no responsibility or liability (whether in contract, tort or otherwise) in relation to any loss whatsoever arising from or in connection with any use of this plan or the adequacy, accuracy or completeness of it or any information within it.





78 Lower Richmond Road
Putney
SW15 1LL

020 8788 6611
sales@japutney.co.uk
www.jamesanderson.co.uk

